



**POOLE
TOWNSEND**

Palace Apartment, Main Street, Grange-Over-Sands

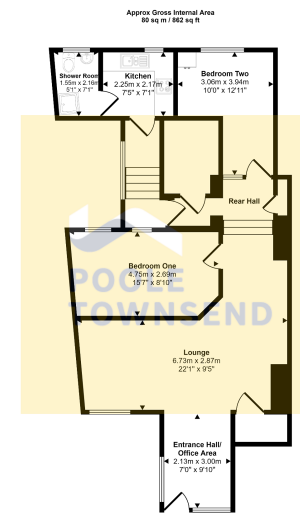
£157,000

🛏️ 2 🚿 1 🚗 1



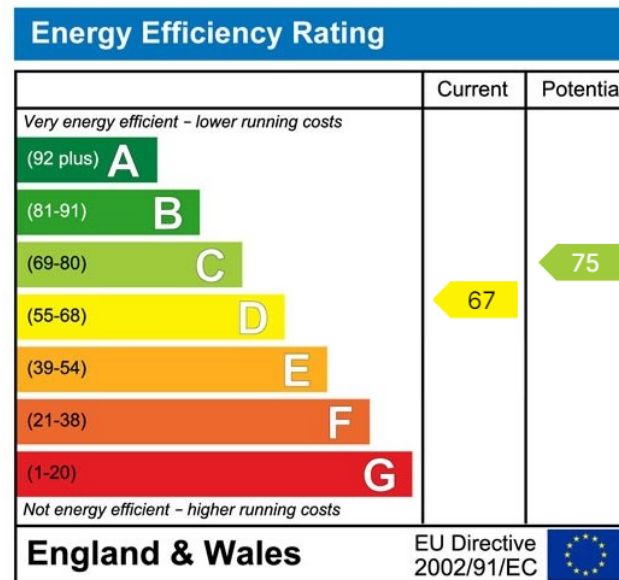
- 2 Bedroomed Ground Floor Apartment
- Kitchen and Shower Room
- Access to a Wide Range of Amenities
- Currently Used as a Holiday Let
- Bright Open Plan Lounge Diner
- Central Location
- Suit a Wide Range of Buyers
- Freehold





Floorplan
This floorplan is only for illustrative purposes and is not to scale. Measurements of rooms, doors, windows, and any items are approximate and no responsibility is taken for any error, omission or the appearance of items such as bathroom suites are representations only and may not look like the real items. Made with Made Spriggy 360.

Situated in an imposing building in the centre of Grange is this deceptively spacious apartment. Featuring a bright open plan lounge/diner, two generous size bedrooms, a kitchen and shower room with views to Morecambe bay. Conveniently placed for access to a wide range of amenities as well as picturesque walks along the Promenade, this property would appeal to first-time buyers, rental investors and those looking for a second/holiday home surrounded by picturesque scenery. No Chain.



Visit us at
www.pooletownsend.co.uk
enquiries@pooletownsend.co.uk

We are open
 Monday – Friday 9.00 – 5.00
 Saturday 9.00 – 1.00

Barrow 01229 811811
 Ulverston 01229 588111
 Grange 015395 33316
 Kendal 01539 734455
 Milnthorpe 015395 62044