






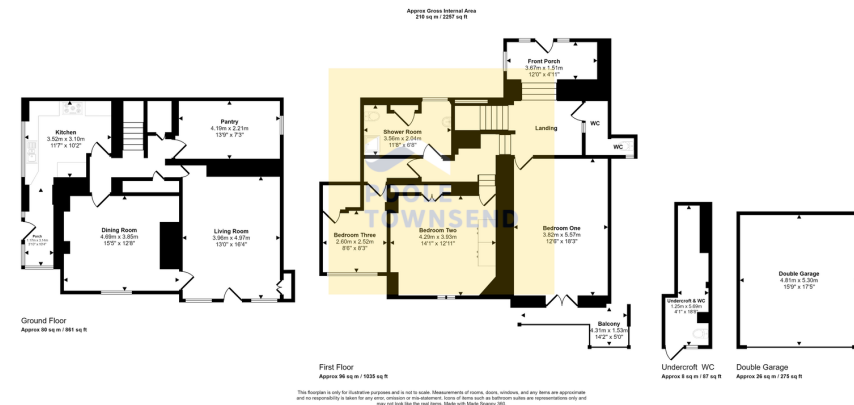
Black Rock, Morecambe Bank, Grange-over-Sands
£240,000

 3  2  3

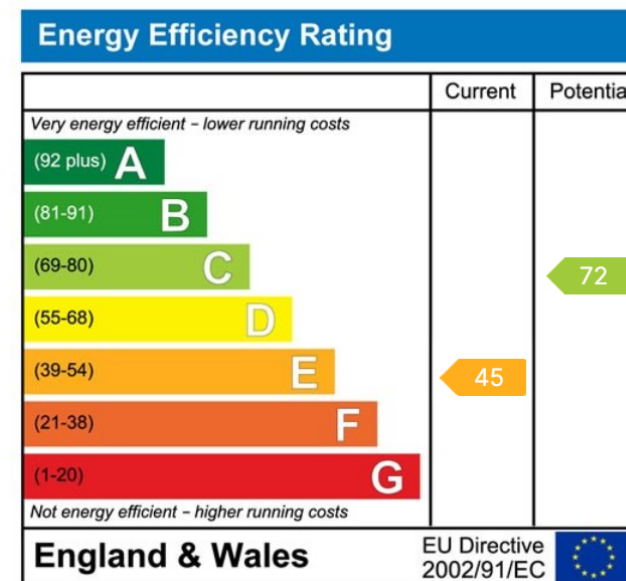


- A deceptively spacious maisonette
- Stunning Bay Views
- Viewing Recommended
- Leasehold
- Centrally located
- Garage & Parking
- 3 Bedrooms
- Band C





A deceptively spacious maisonette apartment, centrally located within the Edwardian coastal town of Grange over Sands. The property has been sympathetically extended. Views to Morecambe Bay and the hills beyond. Viewing recommended.



Visit us at
www.pooletownsend.co.uk
enquiries@pooletownsend.co.uk

We are open
 Monday – Friday 9.00 – 5.00
 Saturday 9.00 – 1.00

Barrow 01229 811811
 Ulverston 01229 588111
 Grange 015395 33316
 Kendal 01539 734455
 Milnthorpe 015395 62044