



**POOLE
TOWNSEND**

Westcliffe Gardens, Grange over Sands, LA11 6BS

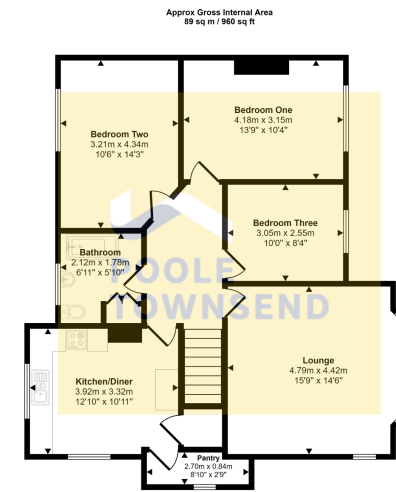
£199,950

3 1 1



- First floor apartment
- Council tax band B
- Low maintenance gardens
- NO UPPER CHAIN
- Picturesque views
- Leasehold
- Bright Lounge
- Secure garden store
- 3 bedrooms

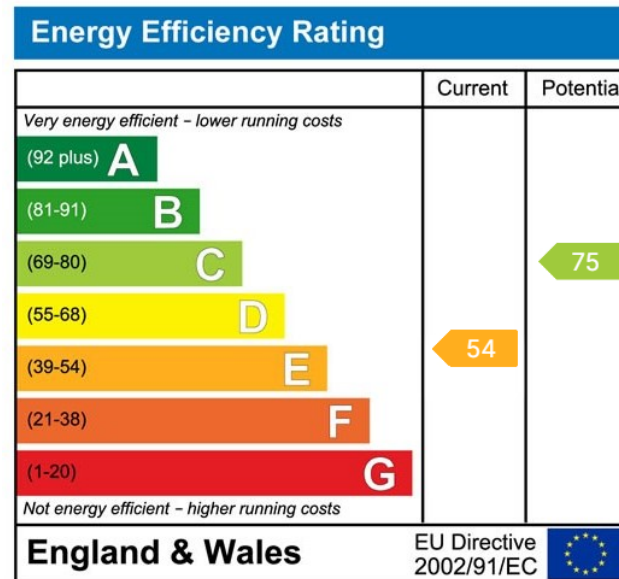




First Floor

This floorplan is only for illustrative purposes and is not to scale. Measurements of rooms, doors, windows, and any items are approximate and no responsibility is taken for any error, omission or mis-statement. Icons of items such as bathroom suites are representations only and may not look like the real items. Made with Made Happy 360.

Pleasantly located on the edge of the town centre and situated in an elevated position, this superb first floor apartment enjoys picturesque views across Morecambe bay and beyond to Ingleborough Fells. Benefitting from generous and versatile accommodation which includes a bright lounge, a kitchen/diner with walk-in pantry, three bedrooms and bathroom. Complete with low maintenance gardens and patios and a secure garden store, this property will appeal to a wide range of buyers. No Chain.



Visit us at
www.pooletownsend.co.uk
enquiries@pooletownsend.co.uk

We are open
 Monday – Friday 9.00 – 5.00
 Saturday 9.00 – 1.00

Barrow 01229 811811
 Ulverston 01229 588111
 Grange 015395 33316
 Kendal 01539 734455
 Milnthorpe 015395 62044