



**POOLE
TOWNSEND**

12 Graythwaite Court, Fernhill Road, Grange-Over-Sands, LA11 7BN

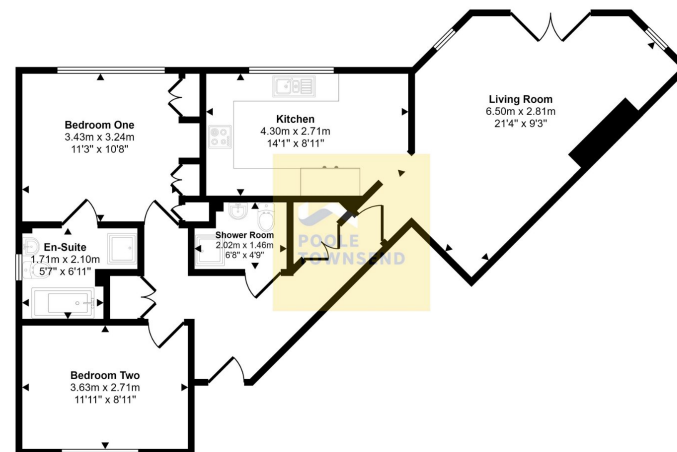
£350,000

🛏️ 2 🚿 2 🚗 1



- Morecambe Bay views
- Master bedroom en suite
- Communal bowling green
- Garage with remote control door
- Good storage
- Balcony
- Luxury development
- Walking distance to shops
- Underfloor heating throughout
- Private entrance

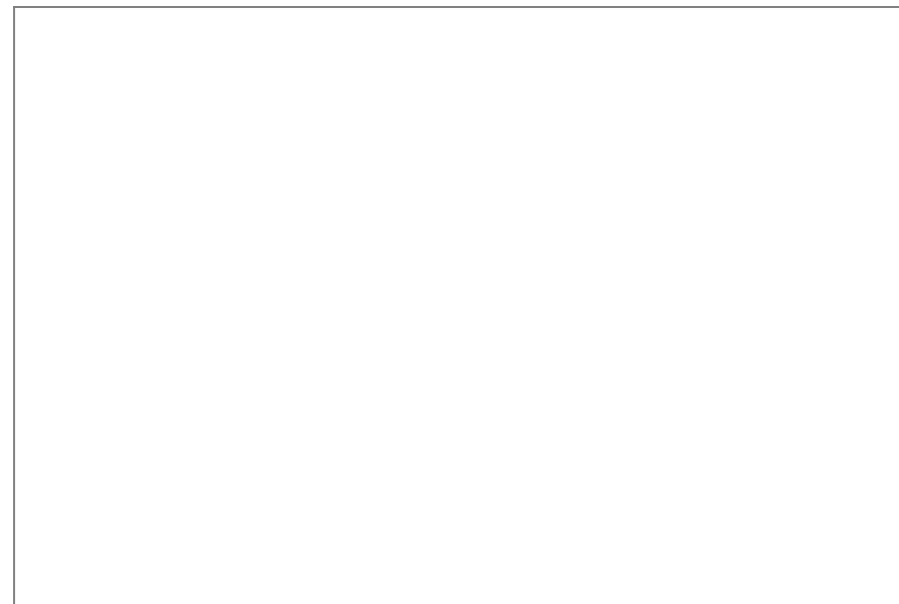




Floorplan
 Approx 78 sq m / 838 sq ft

This floorplan is only for illustrative purposes and is not to scale. Measurements of rooms, doors, windows, and any items are approximate and no responsibility is taken for any error, omission or mis-statement. Icons of items such as bathroom suites are representations only and may not look like the real items. Made with Made Snappy 360.

Situated in the exclusive Graythwaite Court development, is this impressive first floor apartment. Enjoying picturesque views across Morecambe Bay, this wonderfully light property features a generous sized living room with balcony, a kitchen with fitted appliances, two double bedrooms, one with an en-suite facility and an additional shower room. Complete with a single garage the use of the communal grounds and bowling facilities, this apartment is perfect as a main residence or second home.



Visit us at
www.pooletownsend.co.uk
enquiries@pooletownsend.co.uk

We are open
 Monday – Friday 9.00 – 5.00
 Saturday 9.00 – 1.00

Barrow 01229 811811
 Ulverston 01229 588111
 Grange 015395 33316
 Kendal 01539 734455
 Milnthorpe 015395 62044