



**POOLE
TOWNSEND**

Bowfell, Cartmel Lodge Park, Grange over Sands, LA11 6PN

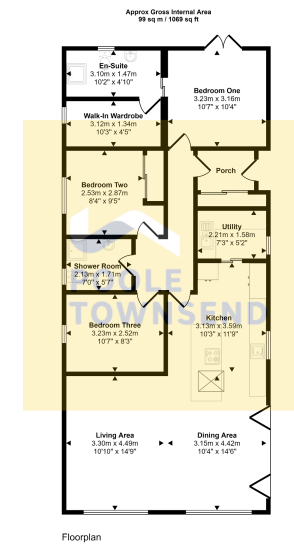
£325,000

3 2 1



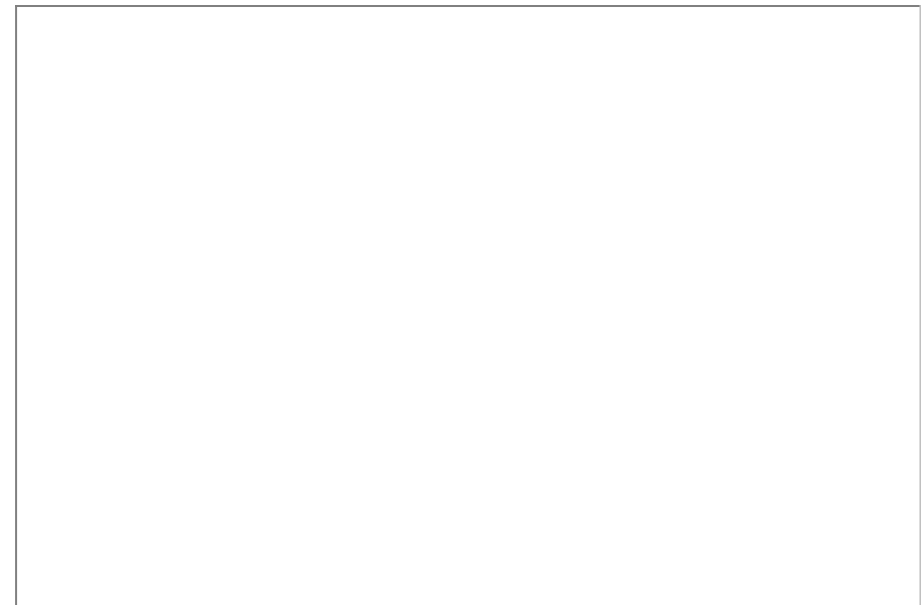
- Desirable location
- Beautiful decor
- Master bedroom with ensuite and dressing room
- Rainfall shower
- Leasehold
- Open plan living
- Ideal for families
- Vaulted ceiling
- 3 double bedrooms





This floorplan is only for illustrative purposes and is not to scale. Measurements of rooms, doors, windows, and any areas are approximate and no responsibility is taken for any error, omission or mis-statement. Areas of floor such as bathroom suites are representative only and may not look like the real items. Made with Made Easy 360.

A truly stunning lodge set within the heart of the hugely popular village of Cartmel. Snuggled on the edge of the Lake District national Park the Lodge is set just a short walk from Cartmel's Michelin starred restaurants and charming shops and cafes. Boasting a spacious open plan living space with exquisite modern kitchen, utility room and tall bi-fold doors leading to the raised patio, 3 double bedrooms, with an en-suite shower and walk-in wardrobe to the master suite and a family shower room. Parking for multiple vehicles and surrounding lawn gardens.



Visit us at
www.pooletownsend.co.uk
enquiries@pooletownsend.co.uk

We are open
 Monday – Friday 9.00 – 5.00
 Saturday 9.00 – 1.00

Barrow 01229 811811
 Ulverston 01229 588111
 Grange 015395 33316
 Kendal 01539 734455
 Milnthorpe 015395 62044