

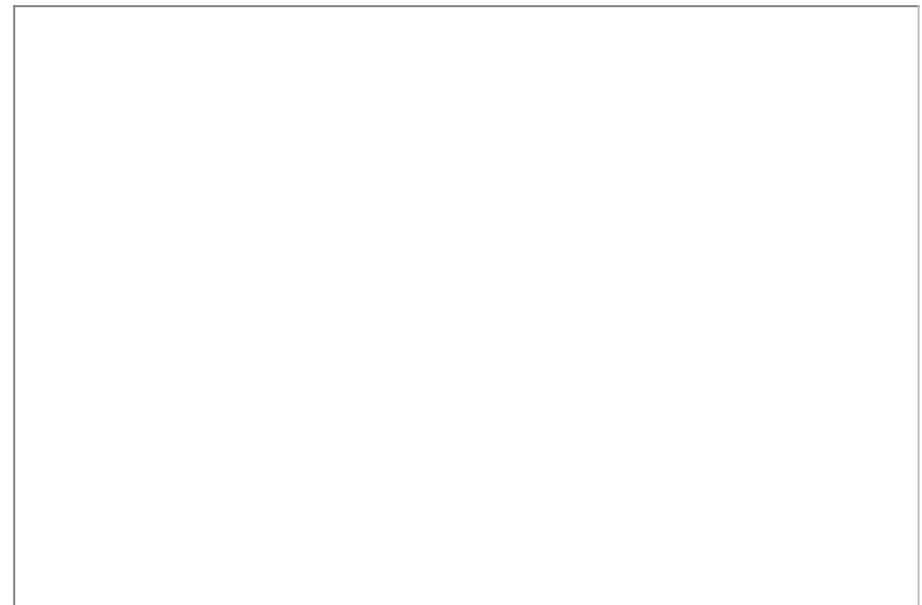
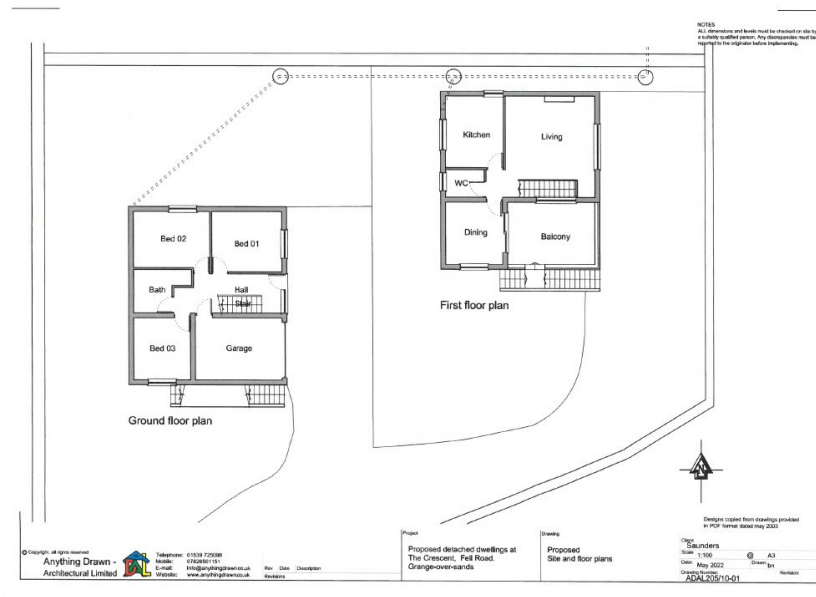
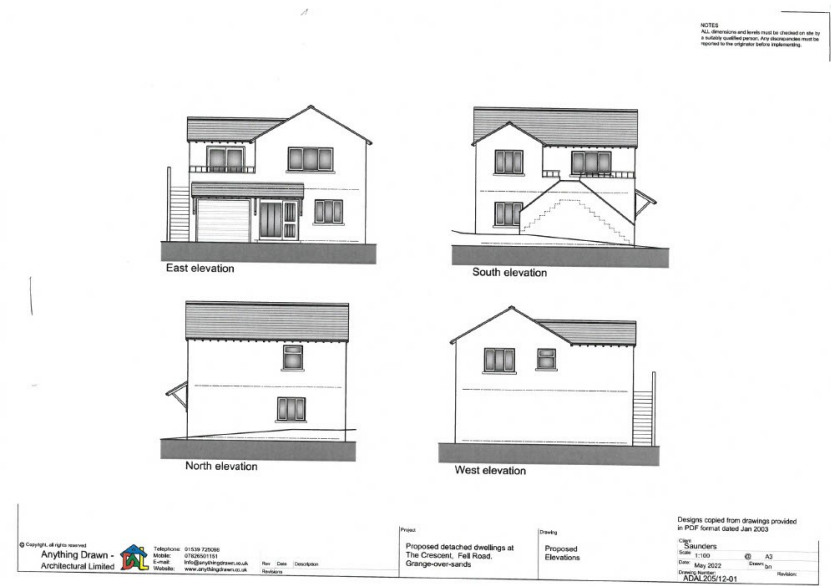


**POOLE  
TOWNSEND**

# Plot 1, The Crescent, Grange-over-Sands

£350,000

3 1 2



- New Build

- 3 Bedrooms

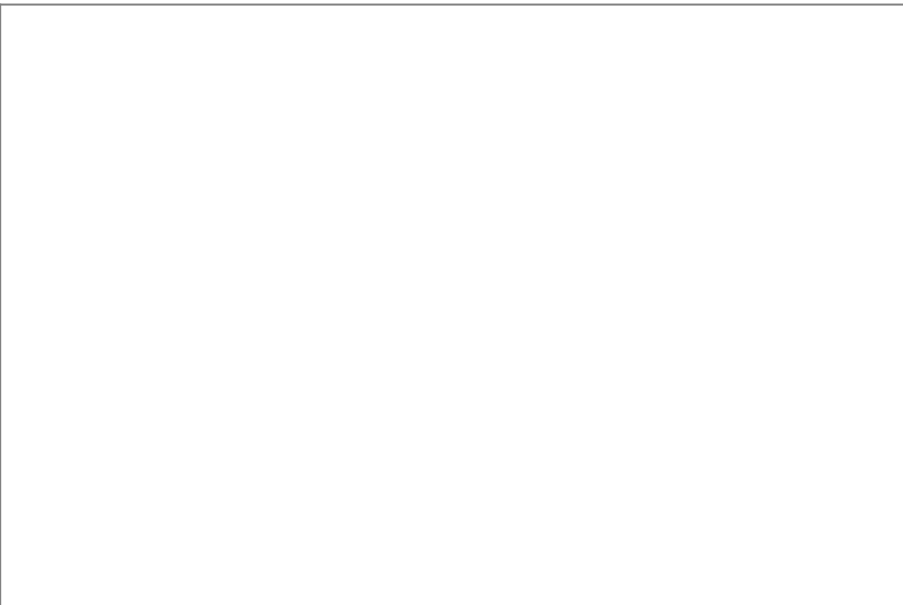
- Garden

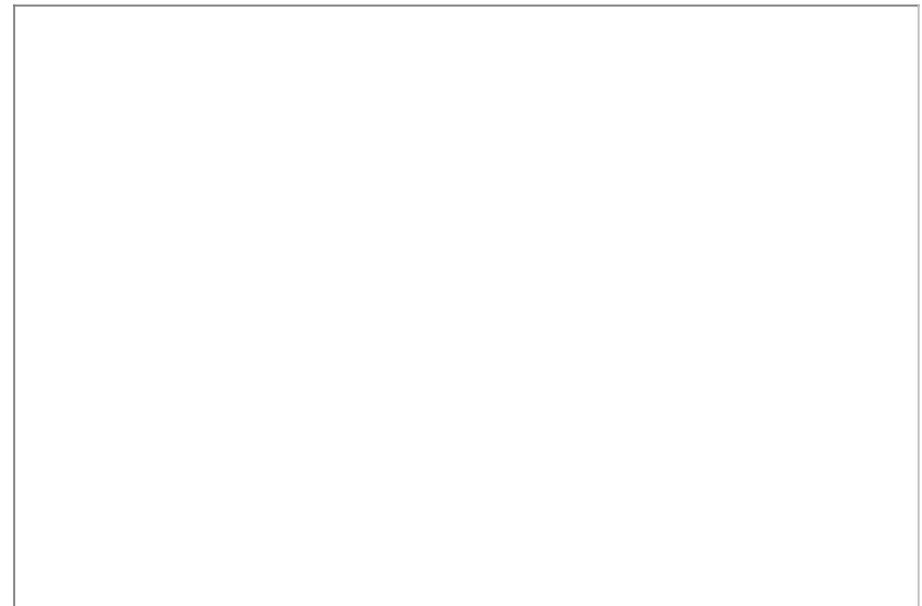
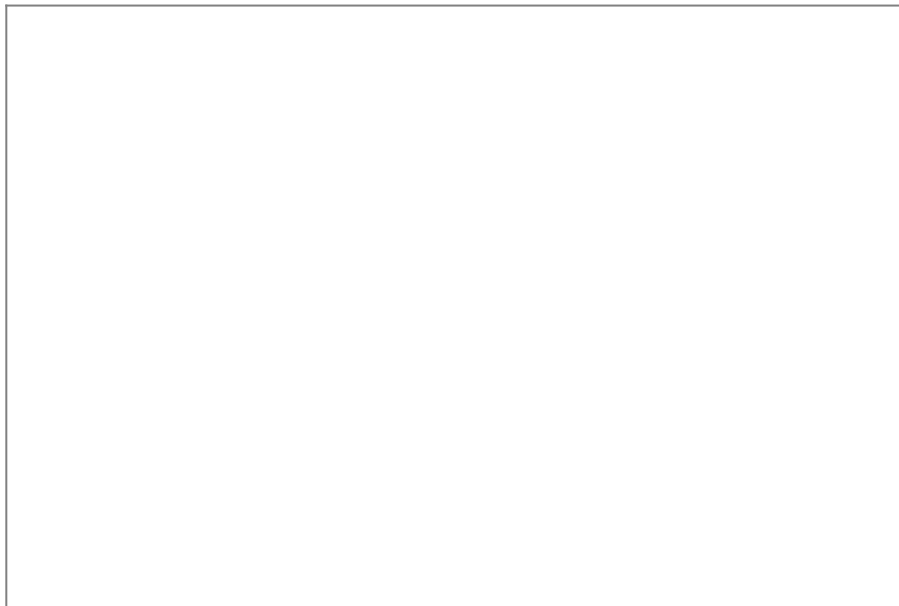
- Tile Allowance

- Detached House

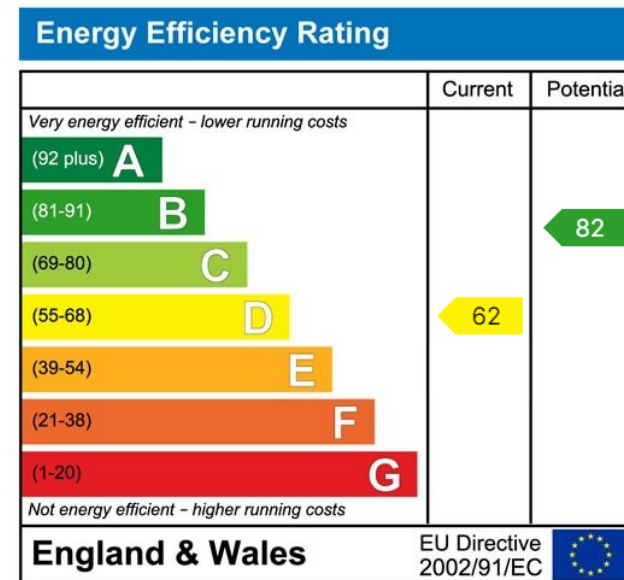
- Secure Storage And Parking

- Kitchen Allowance





Coming Soon Two, 3 bedroom detached properties finished to the highest standard throughout. Currently under construction by the reputable Ian Saunders, each dwelling includes secure storage, three bedrooms and family bathroom and ensuite to the ground floor Whilst the first floor boasts a large lounge, utility/cloakroom and stunning open plan kitchen/diner with doors opening out onto a balcony seating area. The outside space includes a generous size garden with one dwelling, whilst the other has a substantial area of woodland.



Visit us at  
[www.pooletownsend.co.uk](http://www.pooletownsend.co.uk)  
[enquiries@pooletownsend.co.uk](mailto:enquiries@pooletownsend.co.uk)

We are open  
Monday – Friday 9.00 – 5.00  
Saturday 9.00 – 1.00

Barrow 01229 811811  
Ulverston 01229 588111  
Grange 015395 33316  
Kendal 01539 734455  
Milnthorpe 015395 62044