



**POOLE  
TOWNSEND**

# Laurel Gardens, Kendal, LA9 6FE

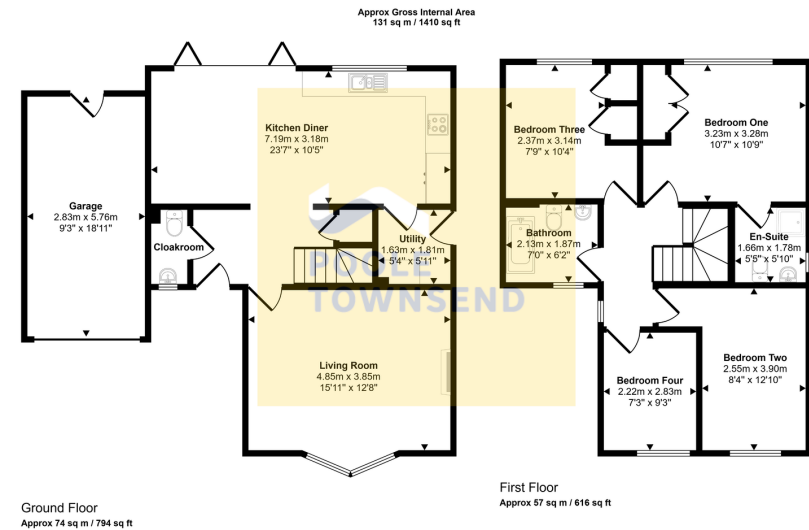
£438,000

🛏 4 🍳 2 🛋 2

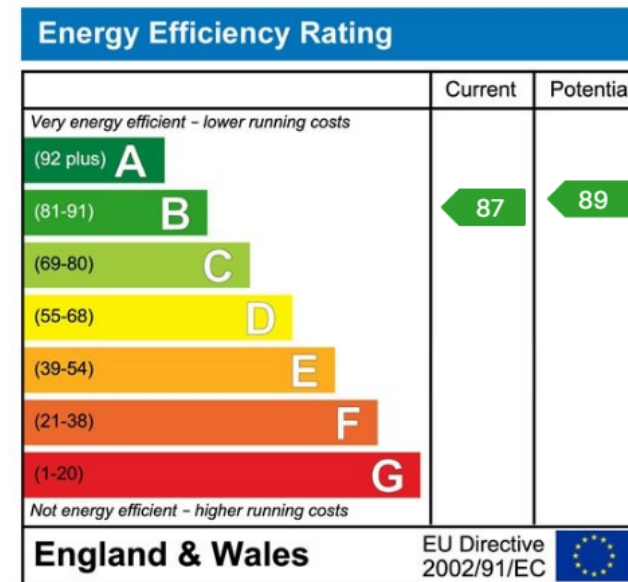


- Detached Family Home
- Four Bedrooms
- Sleek Bathroom
- Modern Kitchen/Diner With Bi-Fold Doors To Garden
- EPC: B
- Solar Panels & Battery Storage
- Master En-Suite
- Bright Living Room
- Drive & Garage With Remote Controlled Door
- Council Tax Band: E





Set in a peaceful spot within a sought-after development, this surprisingly spacious family home combines comfort, style, and eco-friendly living with solar panels and battery storage. Designed with modern family living in mind, the ground floor features a bright and welcoming living room, along with a generous open-plan kitchen/diner and sitting area, where bi-fold doors open wide to a private garden, perfect for relaxing or entertaining. A handy utility room and cloakroom add convenience. Upstairs offers four generous bedrooms, two with built-in wardrobes, and a stylish en-suite to the master. A modern family bathroom completes the layout. Outside, enjoy off-road parking, a remote-controlled garage, and a beautifully landscaped garden with lawn, decking, mature borders, and vegetable beds, ideal for families and garden lovers alike.



Visit us at  
[www.pooletownsend.co.uk](http://www.pooletownsend.co.uk)  
[enquiries@pooletownsend.co.uk](mailto:enquiries@pooletownsend.co.uk)

We are open  
 Monday – Friday 9.00 – 5.00  
 Saturday 9.00 – 1.00

Barrow 01229 811811  
 Ulverston 01229 588111  
 Grange 015395 33316  
 Kendal 01539 734455  
 Milnthorpe 015395 62044