



**POOLE
TOWNSEND**

Derby Square, Windermere, LA23 1EE

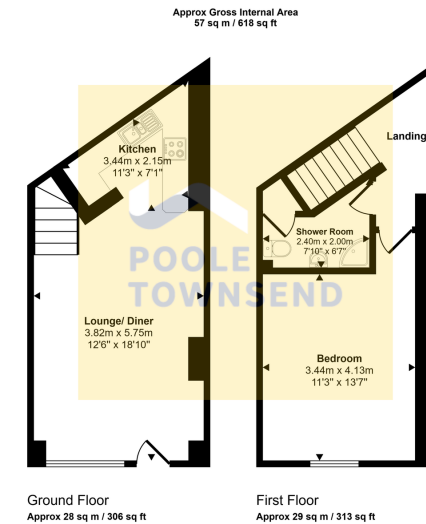
£260,000

1 1 1



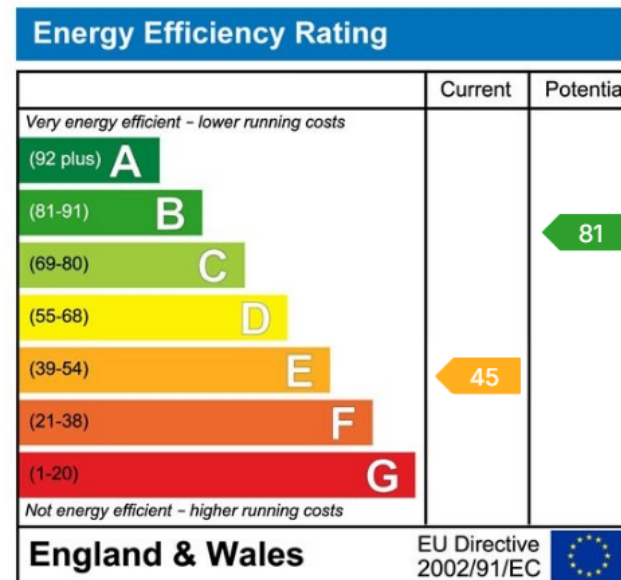
- Traditional Stone Built Cottage
- Kitchen
- Stylish Shower Room
- Ideal Main Residence Or Investment
- Council Tax Band: TBC
- Open Plan Reception Room
- Large Double Bedroom
- Convenient Location
- No Chain
- Tenure: Freehold





This floorplan is only for illustrative purposes and is not to scale. Measurements of rooms, doors, windows, and any items are approximate and no responsibility is taken for any error, omission or mis-statement. Icons of items such as bathroom suites are representations only and may not look like the real items. Made with Made Snappy 360.

Nestled in the heart of the Lake District National Park in a peaceful setting, just a short stroll from the town centre, this charming traditional stone-built cottage offers the perfect blend of character and convenience. Laid across two bright and spacious floors, the property features a generous open-plan reception room that flows effortlessly into the kitchen. Upstairs, you'll find a large double bedroom and a stylish three-piece shower room. Conveniently placed to local amenities, this delightful cottage presents a superb opportunity as a main residence, second home, or rental investment. No Onward Chain.



Visit us at
www.pooletownsend.co.uk
enquiries@pooletownsend.co.uk

We are open
 Monday – Friday 9.00 – 5.00
 Saturday 9.00 – 1.00

Barrow 01229 811811
 Ulverston 01229 588111
 Grange 015395 33316
 Kendal 01539 734455
 Milnthorpe 015395 62044