



**POOLE
TOWNSEND**

Chambers Place, Endmoor, LA8 0BQ

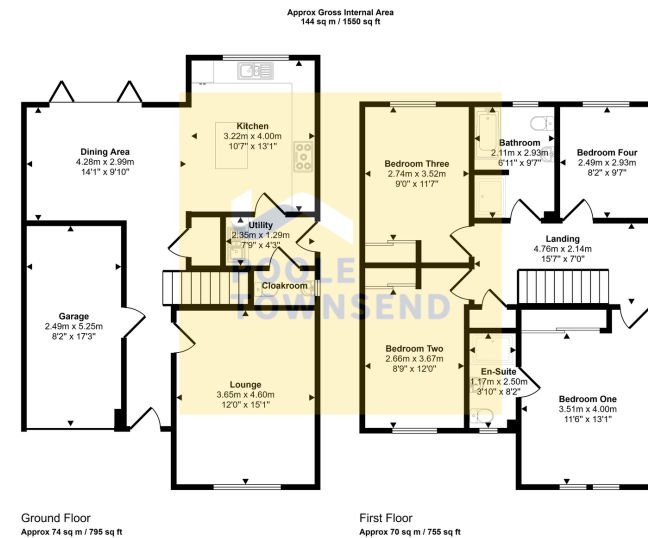
£524,950

🛏 4 🚿 2 🛋 1

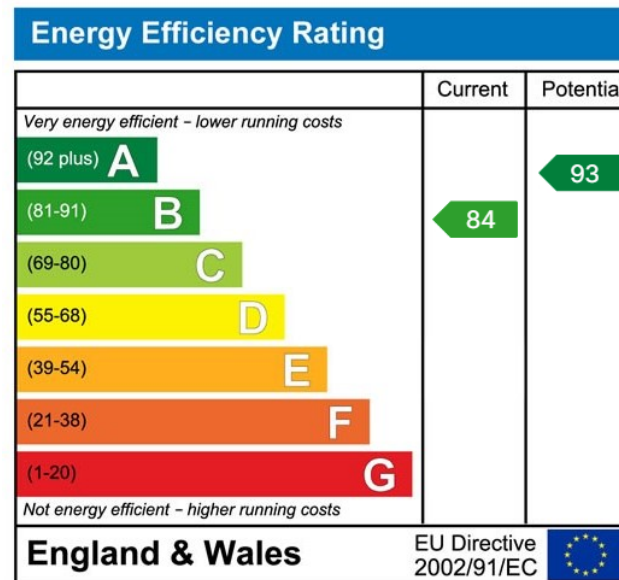


- Impressive Executive Home
- Welcoming Entrance Hall
- Spacious Lounge
- Stunning Open Plan Kitchen Diner
- Principal Bedroom with En-Suite
- Practical Utility Room
- Integral Garage
- Beautifully Landscaped Rear Garden
- EPC Rating: B
- Council Tax Band: F





Situated within a new Story Homes development in the highly sought-after village of Endmoor, this impressive executive home is thoughtfully designed with modern family living in mind. The spacious and well-planned layout begins with a welcoming entrance hall that leads to a generous lounge, a fitted storage cupboard, and a stunning open-plan dining kitchen. Bi-fold doors at the rear open onto a fully enclosed garden with a lawn and patio, perfect for outdoor entertaining and family time. The ground floor also benefits from a practical utility room, a convenient cloakroom, and internal access to the integral garage. Upstairs, the property offers three well-proportioned double bedrooms, including a principal bedroom with en-suite, a fourth large single bedroom, and a sleek, contemporary four-piece family bathroom.



Visit us at
www.pooletownsend.co.uk
enquiries@pooletownsend.co.uk

We are open
 Monday – Friday 9.00 – 5.00
 Saturday 9.00 – 1.00

Barrow 01229 811811
 Ulverston 01229 588111
 Grange 015395 33316
 Kendal 01539 734455
 Milnthorpe 015395 62044