



**POOLE
TOWNSEND**

Lune Valley Court, Tebay

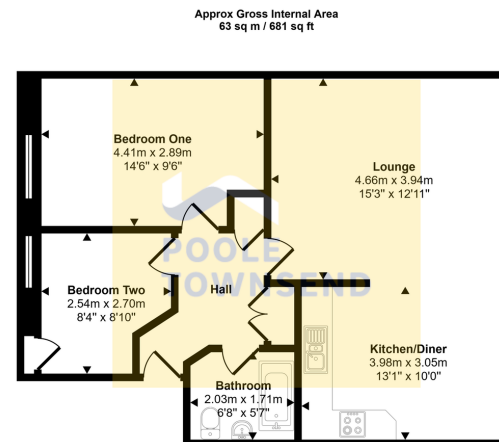
£78,000

2 1 1



- Top Floor Apartment
- Picturesque Views
- Open Plan
- Generously Sized Bedrooms
- Naturally Bright Throughout
- Off Road Parking
- Ideal Rental Investment
- No Onward Chain
- EPC Rating: E
- Council Tax Band: A

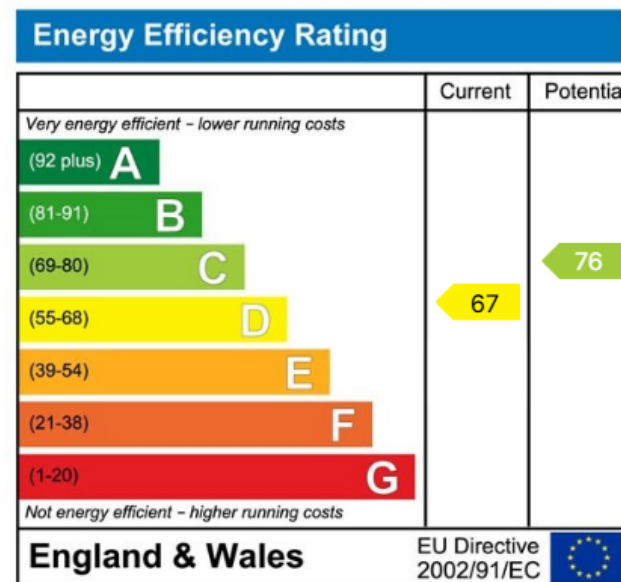




Floorplan

This floorplan is only for illustrative purposes and is not to scale. Measurements of rooms, doors, windows, and any items are approximate and no responsibility is taken for any error, omission or mis-statement. Icons of items such as bathroom suites are representations only and may not look like the real items. Made with Made Snappy 360.

Nestled on the edge of Tebay village and enjoying picturesque views across open fields and farmland, this generously proportioned top floor apartment presents a fantastic opportunity for buyers to update and personalise the space to their own taste and requirements. The accommodation comprises a spacious open-plan lounge and kitchen/diner, two well-sized bedrooms, and a three-piece bathroom, along with the added benefit of off road parking. Offered with no onward chain, this apartment will appeal to a wide range of buyers, from first-time purchasers to those seeking an investment or a low-maintenance base in the countryside.



Visit us at
www.pooletownsend.co.uk
enquiries@pooletownsend.co.uk

We are open
 Monday – Friday 9.00 – 5.00
 Saturday 9.00 – 1.00

Barrow 01229 811811
 Ulverston 01229 588111
 Grange 015395 33316
 Kendal 01539 734455
 Milnthorpe 015395 62044