





Gatebeck Road, Endmoor, Kendal, LA8 0HL

£495,000

🛏 4 🚿 2 🛋 2

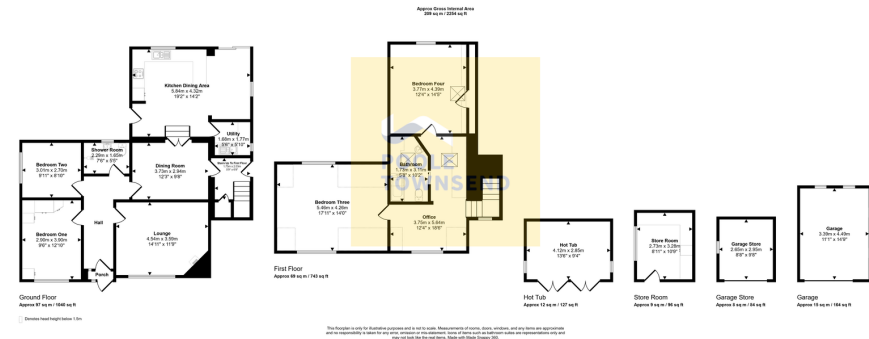




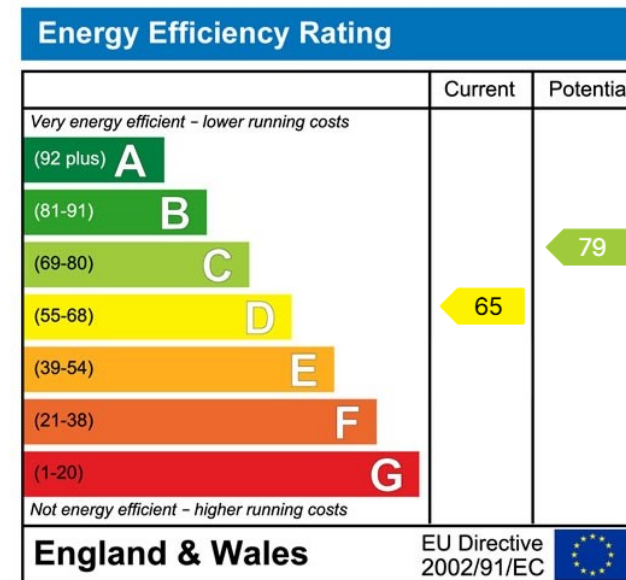
- Delightful Detached Property • Countryside Views
- 4 Bedrooms • Large Dining Kitchen
- Home Office • Large summerhouse
- Well-Maintained Gardens • Detached Single Garage
- Council Band: D • EPC Rating: TBC







Nestled on the edge of the popular village of Endmoor and enjoying delightful views across open farmland, this deceptively spacious family home offers the perfect combination of country living and modern convenience. Sympathetically extended and developed over two floors, the property is wonderfully bright and versatile, providing ample space for a growing family or the potential to be used as an Air B&B, as the first floor can be completely self-contained. The majority of the accommodation is laid out on the ground floor and includes two generous double bedrooms, two reception rooms, a contemporary shower room, and a large family kitchen, making it ideal for both everyday living and entertaining. The first floor features two large double bedrooms, a bathroom, and an office. Outside, the property is surrounded by well-maintained gardens and benefits from ample driveway parking, a detached garage, and a



Visit us at  
[www.pooletownsend.co.uk](http://www.pooletownsend.co.uk)  
[enquiries@pooletownsend.co.uk](mailto:enquiries@pooletownsend.co.uk)

We are open  
 Monday – Friday 9.00 – 5.00  
 Saturday 9.00 – 1.00

Barrow 01229 811811  
 Ulverston 01229 588111  
 Grange 015395 33316  
 Kendal 01539 734455  
 Milnthorpe 015395 62044