



**POOLE
TOWNSEND**

Longlands View, Kendal, LA9 6HJ

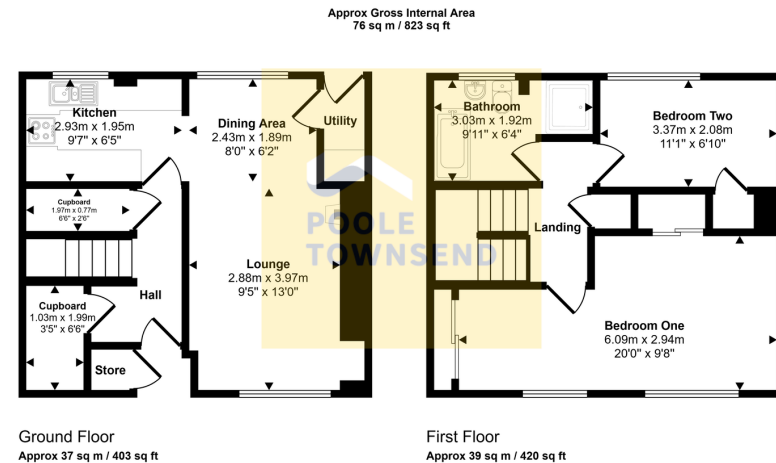
£214,000

3 1 1



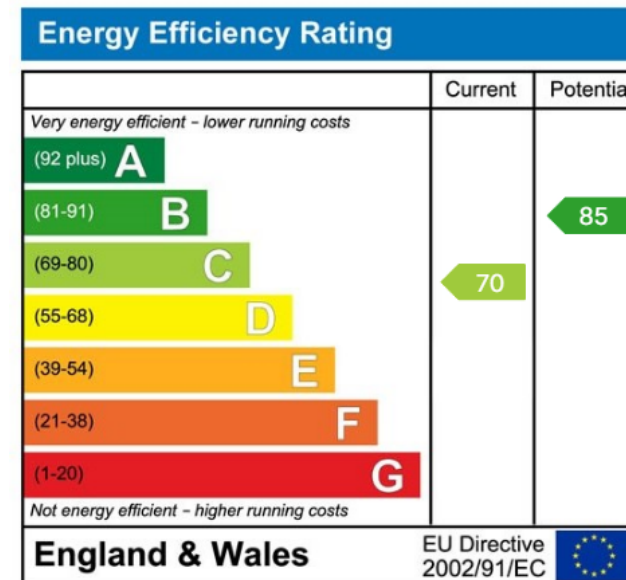
- Delightful Mid terraced House
- 2 Good Size Bedrooms
- Terraced Rear Garden
- Popular Residential Development
- Council Tax Band: B
- Stylishly Renovated
- Tiered Front Garden
- Rooftop Views Towards Open Fields
- No Chain
- Tenure: Freehold





This floorplan is only for illustrative purposes and is not to scale. Measurements of rooms, doors, windows, and any items are approximate and no responsibility is taken for any error, omission or mis-statement. Icons of items such as bathroom suites are representations only and may not look like the real items. Made with Made Snappy 360.

Nestled at the head of a popular residential development, this delightful mid-terraced home enjoys elevated views over rooftops towards open fields. Bright and airy across two floors, the property has been stylishly renovated, with opportunities to add personal finishing touches to suit individual tastes. Inside, the home features a spacious lounge that seamlessly flows into a modern kitchen-diner, creating an inviting space for relaxation and entertaining. Additional highlights include two useful storage cupboards and a separate utility area. Upstairs, there are two generously sized bedrooms and a sleek contemporary bathroom. Externally, the property boasts a tiered patio garden to the front, while the rear features a terraced garden with a decked seating area.



Visit us at
www.pooletownsend.co.uk
enquiries@pooletownsend.co.uk

We are open
 Monday – Friday 9.00 – 5.00
 Saturday 9.00 – 1.00

Barrow 01229 811811
 Ulverston 01229 588111
 Grange 015395 33316
 Kendal 01539 734455
 Milnthorpe 015395 62044