



**POOLE
TOWNSEND**

Beacon Buildings, Kendal

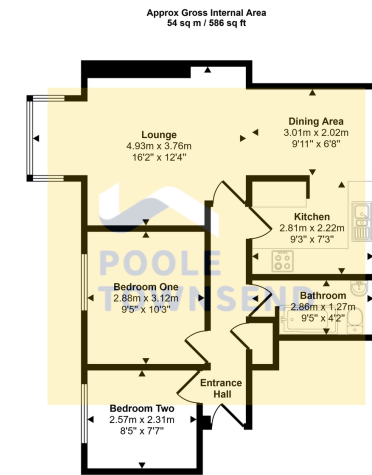
£150,000

2 1 1



- Spacious, Modern Apartment • Open Plan Living Space
- Sleek Shaker Style Kitchen • Two Bedrooms
- Neutral Bathroom Suite • Fantastic Town Centre Location
- Allocated Parking Space • Ideal First Time Buy
- Council Tax Band: B • EPC Rating: tbc





Floorplan

This floorplan is only for illustrative purposes and is not to scale. Measurements of rooms, doors, windows, and any items are approximate and no responsibility is taken for any error, omission or mis-statement. Icons of items such as bathroom suites are representations only and may not look like the real items. Made with Made Snappy 360.

Ideally located close to Kendal town centre, this bright and modern second-floor apartment offers generous open-plan living space, complemented by two well-proportioned bedrooms and a stylish bathroom. With the added benefit of allocated parking and excellent transport links nearby, this property presents a fantastic opportunity for first time buyers, couples or rental investors.

Energy Efficiency Rating

	Current	Potential
Very energy efficient – lower running costs		
(92 plus) A		
(81-91) B		
(69-80) C	75	80
(55-68) D		
(39-54) E		
(21-38) F		
(1-20) G		
Not energy efficient – higher running costs		
England & Wales	EU Directive 2002/91/EC	

Visit us at
www.pooletownsend.co.uk
enquiries@pooletownsend.co.uk

We are open
 Monday – Friday 9.00 – 5.00
 Saturday 9.00 – 1.00

Barrow 01229 811811
 Ulverston 01229 588111
 Grange 015395 33316
 Kendal 01539 734455
 Milnthorpe 015395 62044