



**POOLE  
TOWNSEND**

# Crosthwaite, Kendal

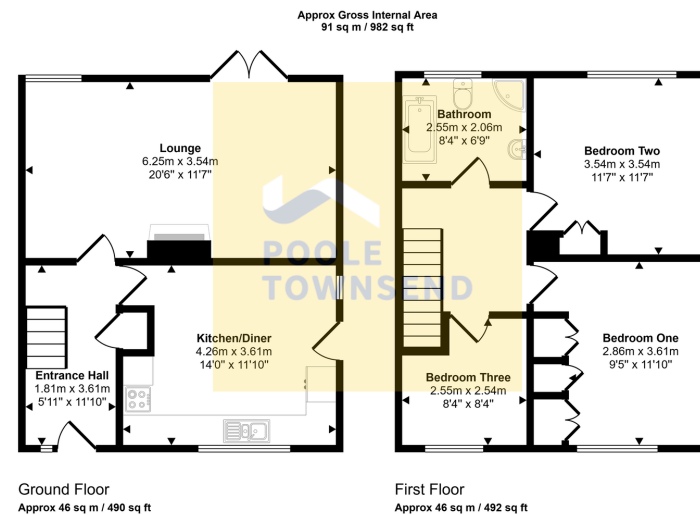
£465,000

3 1 0



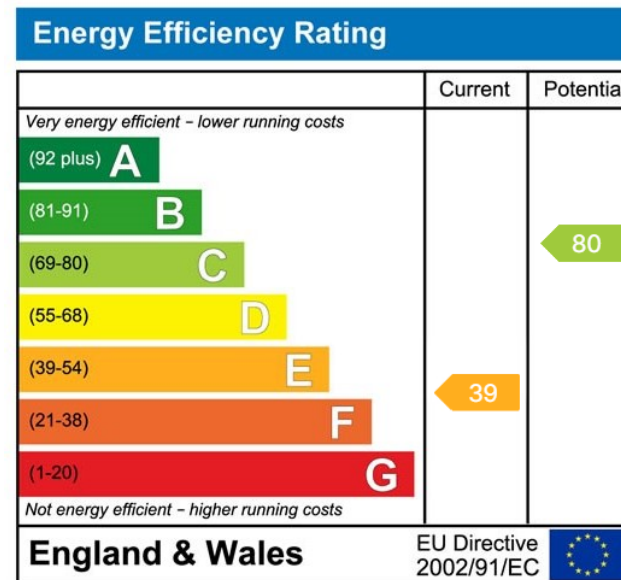
- Peaceful Rural Location
- Three Bedrooms
- Kitchen/Diner
- Ample Parking
- EPC Band: TBC
- Includes Private Woodland Area
- Large Lounge
- Four-Piece Bathroom Suite
- Views To Fields And Woodland
- Council Tax band: D





This floorplan is only for illustrative purposes and is not to scale. Measurements of rooms, doors, windows, and any items are approximate and no responsibility is taken for any error, omission or mis-statement. Icons of items such as bathroom suites are representations only and may not look like the real items. Made with Made Snappy 360.

Nestled in the picturesque village of Crosthwaite within the Lake District National Park, and enjoying attractive views onto fields and woodland, is this fabulous family home. With its abundance of natural light, the property spans two floors and features three well-proportioned bedrooms, a four-piece bathroom, and a spacious kitchen/diner. The large lounge, complete with an open fire, opens out through glazed doors onto a patio seating area and large lawn garden. Additional benefits include off-road parking for multiple vehicles and a private woodland area, which is carpeted in vibrant bluebells each spring.



Visit us at  
[www.pooletownsend.co.uk](http://www.pooletownsend.co.uk)  
[enquiries@pooletownsend.co.uk](mailto:enquiries@pooletownsend.co.uk)

We are open  
 Monday – Friday 9.00 – 5.00  
 Saturday 9.00 – 1.00

Barrow 01229 811811  
 Ulverston 01229 588111  
 Grange 015395 33316  
 Kendal 01539 734455  
 Milnthorpe 015395 62044