



**POOLE  
TOWNSEND**



# Stoneleigh Court, Silverdale

£352,000

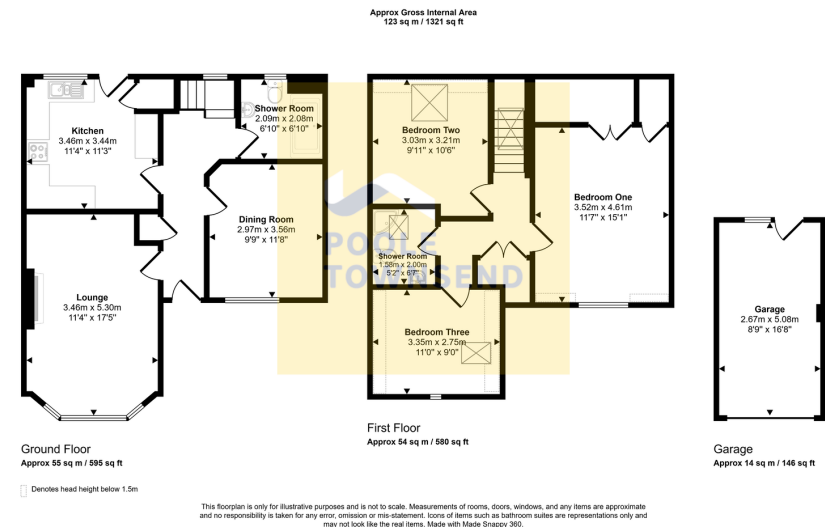
3 2 2



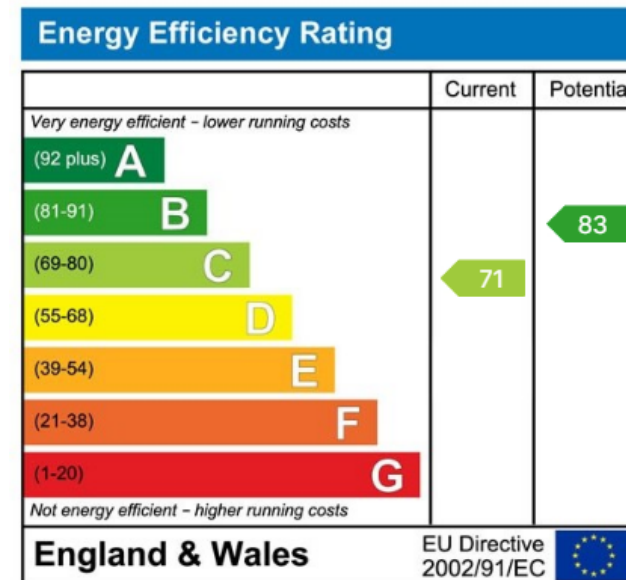


- Spacious Semi Detached Home
- Two Reception Rooms
- Ground Floor & First Floor Shower Room
- Front & Rear Gardens
- Council Tax Band: D
- Neutral Decor Throughout
- Three Double Bedrooms
- Garage & Off-Road Parking
- Central Village Location
- EPC Rating: C





Occupying a peaceful position within the sought-after village of Silverdale, lies this superb and deceptively spacious family home. Generously proportioned over two floors, the property provides a versatile layout which is ideal for growing families or those looking to retire. On the ground floor, you'll find two bright reception rooms, a well-equipped kitchen, and a convenient shower room. Upstairs, there are three further double bedrooms and an additional shower room. The property also boasts a charming enclosed lawn and patio garden, off-road parking for two cars and a detached single garage.



Visit us at  
[www.pooletownsend.co.uk](http://www.pooletownsend.co.uk)  
[enquiries@pooletownsend.co.uk](mailto:enquiries@pooletownsend.co.uk)

We are open  
 Monday – Friday 9.00 – 5.00  
 Saturday 9.00 – 1.00

Barrow 01229 811811  
 Ulverston 01229 588111  
 Grange 015395 33316  
 Kendal 01539 734455  
 Milnthorpe 015395 62044