



**POOLE
TOWNSEND**

Town End Court, Natland

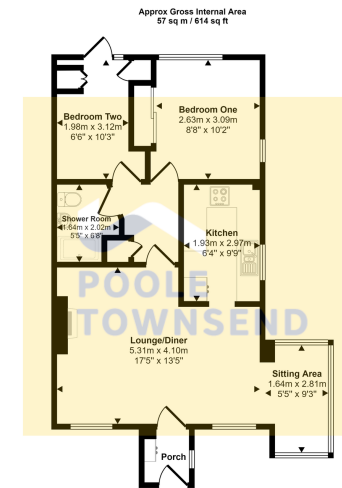
£240,000

2 1 1



- Ground Floor Apartment
- Two Bedrooms
- Situation Within a Small Courtyard
- Shower Room
- Patio and Decked Seating Areas
- Parking
- Detached Garage
- Leasehold - 999 years from 1987
- Council tax band: C
- EPC rating: D

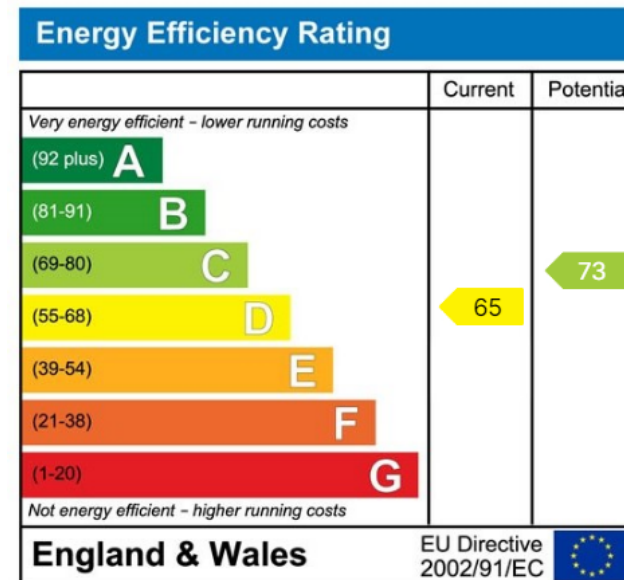




Floorplan

This floorplan is only for illustrative purposes and is not to scale. Measurements of rooms, doors, windows, and any items are approximate and no responsibility is taken for any error, omission or mis-statement. Icons of items such as bathroom suites are representations only and may not look like the real items. Made with Made Snappy 360.

Nestled within a small courtyard development in the popular village of Natland, this charming two bedroom ground floor apartment is perfect for those looking to downsize or an easily managed lock and leave property. The spacious layout features a bright open-plan reception and kitchen, two well-sized bedrooms with built-in storage, and a modern shower room. Surrounded by private patio seating areas, the apartment also offers the convenience of parking and a detached garage. This property truly needs to be seen to be appreciated.



Visit us at
www.pooletownsend.co.uk
enquiries@pooletownsend.co.uk

We are open
 Monday – Friday 9.00 – 5.00
 Saturday 9.00 – 1.00

Barrow 01229 811811
 Ulverston 01229 588111
 Grange 015395 33316
 Kendal 01539 734455
 Milnthorpe 015395 62044