



**POOLE
TOWNSEND**

Wattsfield Road, Kendal

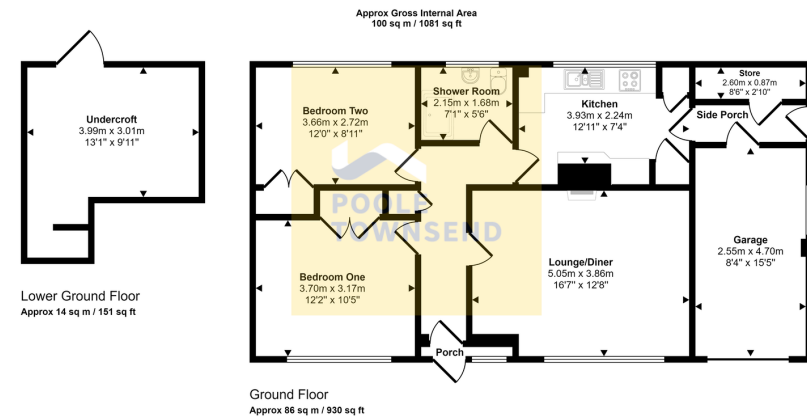
£305,000

🛏️ 2 🪑 1 🚗 1



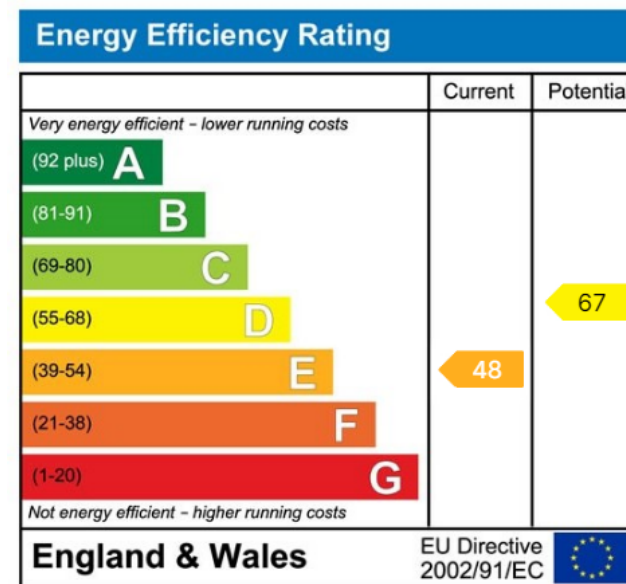
- Spacious Bungalow
- Neutral Kitchen
- Modern Bathroom Suite
- Garage & Off-Road Parking
- Council Tax Band: D
- Bright Lounge
- Two Double Bedrooms
- Large Garden
- No Chain
- Tenure: Freehold





This floorplan is only for illustrative purposes and is not to scale. Measurements of rooms, doors, windows, and any items are approximate and no responsibility is taken for any error, omission or mis-statement. Icons of items such as bathroom suites are representations only and may not look like the real items. Made with Made Snappy 360.

Occupying a generous size plot within a sought-after residential area is this attractively presented true bungalow. Requiring general modernisation, this naturally bright property has storage in abundance and features two good size bedrooms with fitted wardrobes, a stylish shower room, kitchen and a lounge/diner with electric fire. Complete with lawn and patio gardens, a garage, drive and a large under croft, this property is not to be missed. No Chain.



Visit us at
www.pooletownsend.co.uk
enquiries@pooletownsend.co.uk

We are open
 Monday – Friday 9.00 – 5.00
 Saturday 9.00 – 1.00

Barrow 01229 811811
 Ulverston 01229 588111
 Grange 015395 33316
 Kendal 01539 734455
 Milnthorpe 015395 62044