



**POOLE  
TOWNSEND**



# High Sparrowmire, Kendal

£215,000

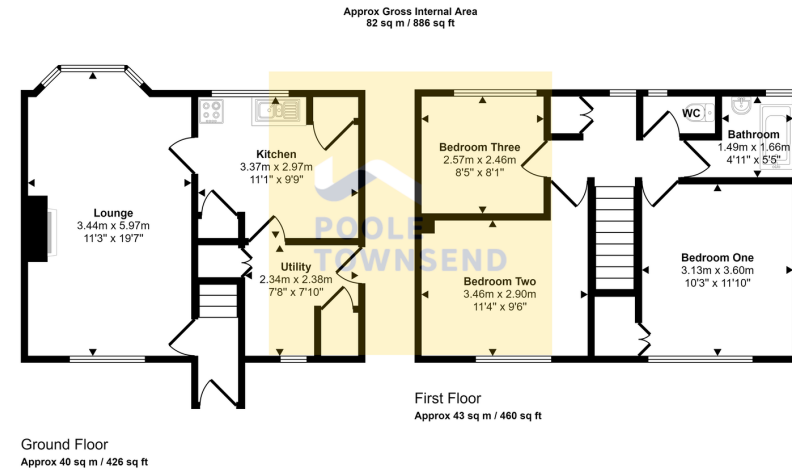
3 1 1





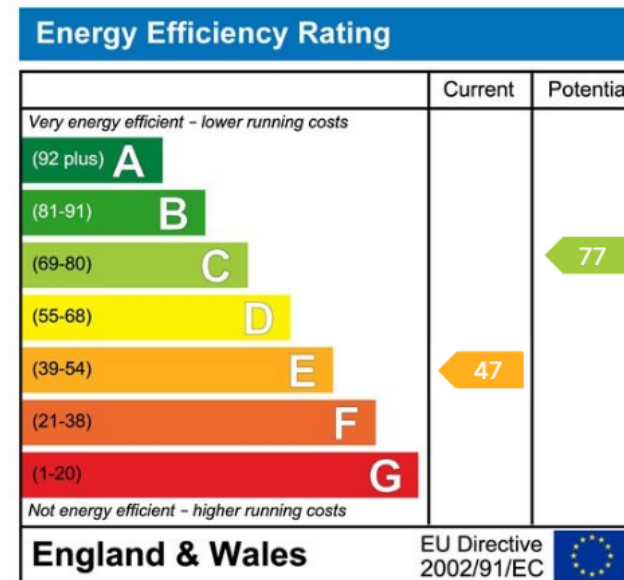
- Mid Terraced House
- Spacious Bright Accommodation
- Large Garden
- Popular Residential Area
- Council Tax Band: B
- 3 Bedrooms
- Fantastic Views
- No Chain
- On The Northern Edge Of Kendal
- Tenure: Freehold





This floorplan is only for illustrative purposes and is not to scale. Measurements of rooms, doors, windows, and any items are approximate and no responsibility is taken for any error, omission or mis-statement. Icons of items such as bathroom suites are representations only and may not look like the real items. Made with Made Snappy 360.

Situated in a popular residential location to the northern edges of the town centre and enjoying views towards open fields and farmland is this fantastic family sized home. Requiring general modernisation and updating, the internal accommodation is spacious and bright and includes a full depth reception room, kitchen and utility to the ground floor, three bedrooms, a bathroom and separate WC to the first floor. Outside, there is a large, tiered lawn garden and on road parking. No Chain.



Visit us at  
[www.pooletownsend.co.uk](http://www.pooletownsend.co.uk)  
[enquiries@pooletownsend.co.uk](mailto:enquiries@pooletownsend.co.uk)

We are open  
 Monday – Friday 9.00 – 5.00  
 Saturday 9.00 – 1.00

Barrow 01229 811811  
 Ulverston 01229 588111  
 Grange 015395 33316  
 Kendal 01539 734455  
 Milnthorpe 015395 62044