



**POOLE
TOWNSEND**

Cherry Tree Crescent, Kendal

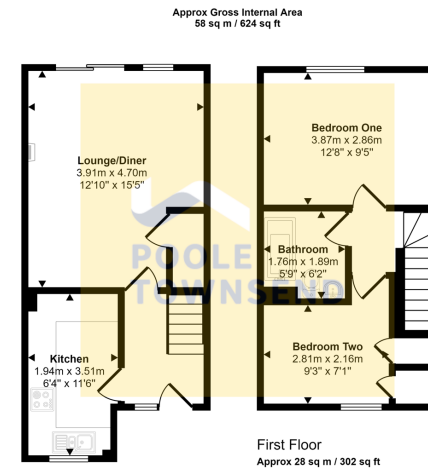
£200,000

🛏️ 2 🚿 1 🚗 1



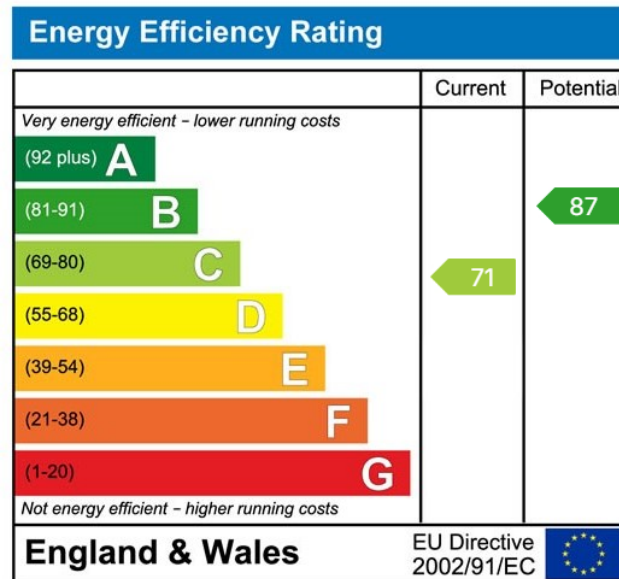
- Bright and Airy Home
- Modern Kitchen
- Neutral Bathroom Suite
- Allocated Parking
- Council Tax Band: B
- Lounge with Patio Doors
- Two Double Bedrooms
- Low Maintenance Garden
- Located in a Quiet Residential Area
- Tenure: Freehold





This floorplan is only for illustrative purposes and is not to scale. Measurements of rooms, doors, windows, and any items are approximate and no responsibility is taken for any error, omission or mis-statement. Icons of items such as bathroom suites are representations only and may not look like the real items. Made with Make Snappy 360.

Situated in a modern residential development on the outskirts of Underwood, is this nicely proportioned mid-terraced home. Naturally bright and airy, the accommodation includes a lounge/diner with gas fire, a modern fitted kitchen, two good size bedrooms and bathroom. With the added benefit of off-road parking to the front and a low maintenance courtyard patio to the rear, this home is a great opportunity for first time buyers to get on the property ladder.



Visit us at
www.pooletownsend.co.uk
enquiries@pooletownsend.co.uk

We are open
 Monday – Friday 9.00 – 5.00
 Saturday 9.00 – 1.00

Barrow 01229 811811
 Ulverston 01229 588111
 Grange 015395 33316
 Kendal 01539 734455
 Milnthorpe 015395 62044