



**POOLE
TOWNSEND**

Low Fellside, Kendal, LA9 4NH

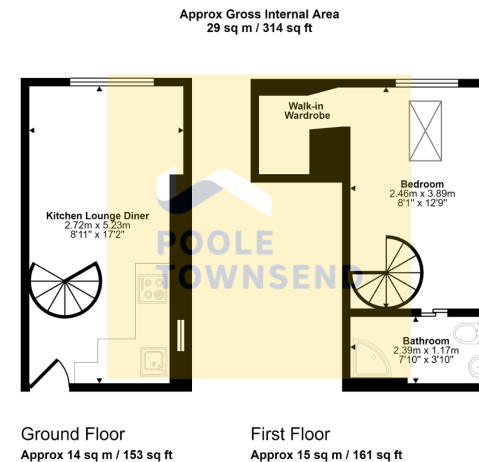
£95,000

1 1 1



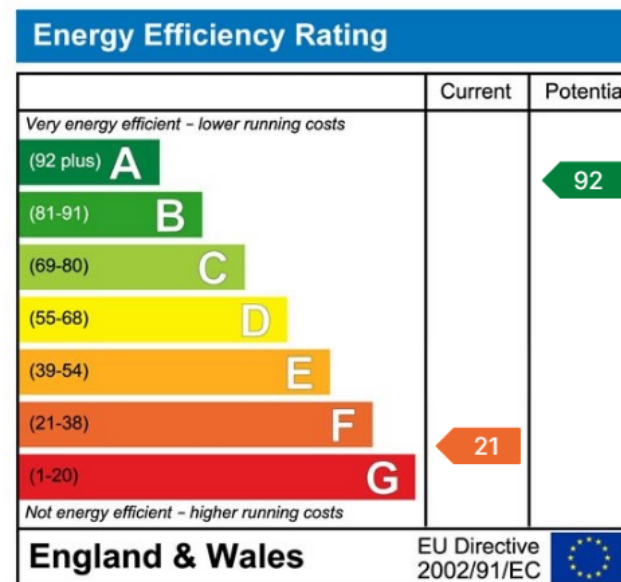
- No Chain
- Large Double Bedroom
- Exposed Timber Beams
- Short Walk To Town Centre
- Council Tax Band: A
- Open Plan Living
- Walk-In Wardrobe
- Ideal For First Time Buyer
- Close To Local Amenities
- Tenure: Freehold





This floorplan is only for illustrative purposes and is not to scale. Measurements of rooms, doors, windows, and any items are approximate and no responsibility is taken for any error, omission or mis-statement. Icons of items such as bathroom suites are representations only and may not look like the real items. Made with Made Snappy 360.

Situated a stones throw from the bustling market town of Kendal is this traditional stone built cottage, in an elevated position with lovely views. Compact in size, the considered layout features an open plan living kitchen on the ground floor and a large double bedroom with walk-in wardrobe and en-suite shower room to the first floor. Ideally suited to first time buyers or those seeking a second home within convenient reach of the Lake District National Park. No Chain



Visit us at
www.pooletownsend.co.uk
enquiries@pooletownsend.co.uk

We are open
 Monday – Friday 9.00 – 5.00
 Saturday 9.00 – 1.00

Barrow 01229 811811
 Ulverston 01229 588111
 Grange 015395 33316
 Kendal 01539 734455
 Milnthorpe 015395 62044