



**POOLE  
TOWNSEND**

Highgate, Kendal, LA9 4EN

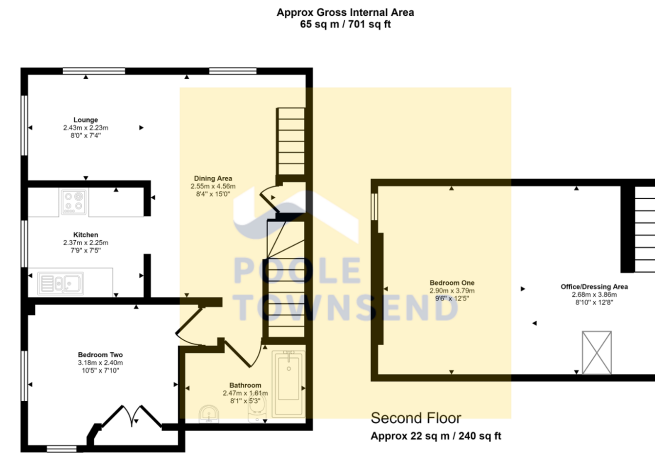
£150,000

🛏️ 2 🚿 1 🚗 1



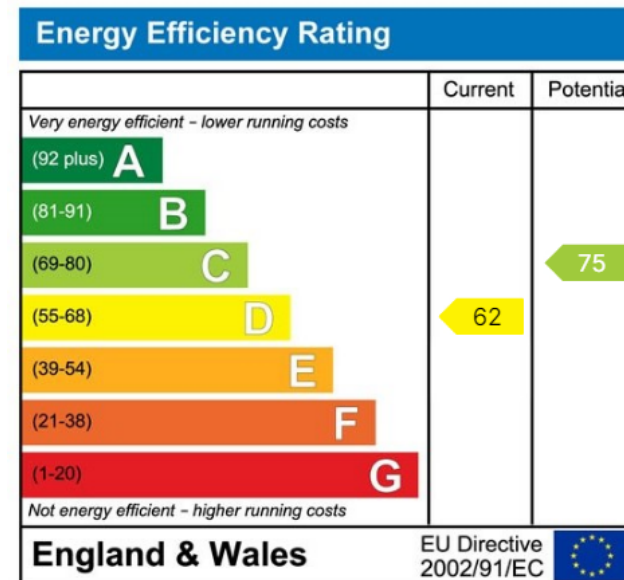
- Charming 2nd Floor Apartment
- Naturally Bright & Airy Accommodation
- Modern Kitchen
- Lovely Town Views
- Council Tax Band: B
- 2 Bedrooms
- Original Feature Beams
- Shared Yard With Designated Parking Space
- Town Centre Location
- Tenure: Leasehold





This floorplan is only for illustrative purposes and is not to scale. Measurements of rooms, doors, windows, and any items are approximate and no responsibility is taken for any error, omission or mis-statement. Icons of items such as bathroom suites are representations only and may not look like the real items. Made with Made Snappy 360.

Located on the edge of the town centre close to Abbot Hall Park is this charming second floor apartment. Naturally bright and airy throughout and retaining original wood beams, the accommodation includes an open plan lounge/diner overlooking Highgate and Kirkland, a modern kitchen and bathroom and a generous size double room. Upstairs there is a large loft bedroom, with dressing area/office and outside there is a shared yard with designated parking space. Conveniently placed for a wide range of amenities and commuter links, this property will appeal to first time buyers or those seeking a second home.



Visit us at  
[www.pooletownsend.co.uk](http://www.pooletownsend.co.uk)  
[enquiries@pooletownsend.co.uk](mailto:enquiries@pooletownsend.co.uk)

We are open  
 Monday – Friday 9.00 – 5.00  
 Saturday 9.00 – 1.00

Barrow 01229 811811  
 Ulverston 01229 588111  
 Grange 015395 33316  
 Kendal 01539 734455  
 Milnthorpe 015395 62044