



**POOLE  
TOWNSEND**

# Keasdale Road, Carr Bank

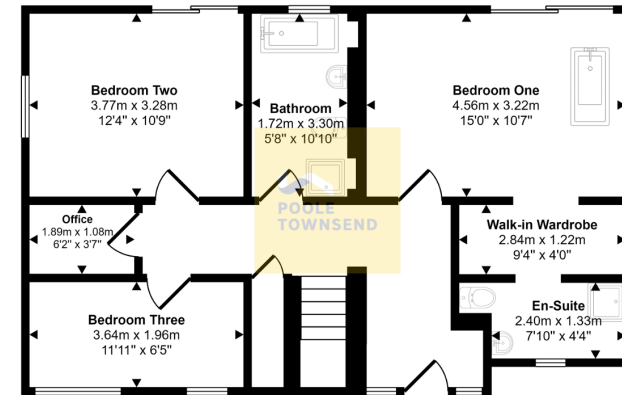
£635,000

3 2 1



- Impressive Modern Family Home
- Spacious Open Plan Living to the First Floor
- Three Bedrooms
- Stunning Contemporary Bathroom Suite
- Tenure: Freehold
- Stunning Views from the Balcony & Living Space
- Modern Kitchen
- Master Bedroom with En-Suite and Walk-In Wardrobe
- Off-Road Parking and Garage
- Council Tax Band: D

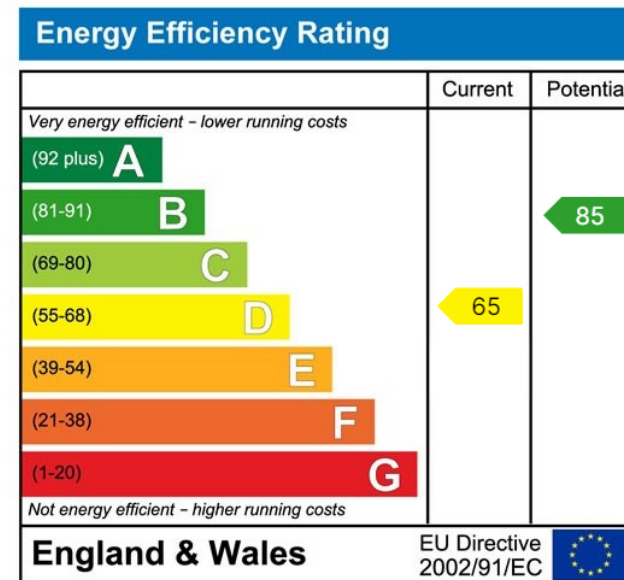




Ground Floor  
Approx 68 sq m / 729 sq ft

This floorplan is only for illustrative purposes and is not to scale. Measurements of rooms, doors, windows, and any items are approximate and no responsibility is taken for any error, omission or mis-statement. Icons of items such as bathroom suites are representations only and may not look like the real items. Made with Made Snappy 360.

Nestled on the edge of Carr Bank and enjoying elevated views towards Morecambe bay and beyond is this fabulous family home. Sympathetically extended and developed by the current owners, the property now has an upside down layout which features a superb master bedroom with freestanding bath, a walk-in wardrobe and en-suite, along with two additional double bedrooms, an office and four piece bathroom on the ground floor and an open plan living kitchen on the first floor with access to a large balcony to make the most of the stunning views. Surrounded by varied lawn and patio gardens as well as parking for two cars, this property must be viewed to be appreciated.



Visit us at  
[www.pooletownsend.co.uk](http://www.pooletownsend.co.uk)  
[enquiries@pooletownsend.co.uk](mailto:enquiries@pooletownsend.co.uk)

We are open  
 Monday – Friday 9.00 – 5.00  
 Saturday 9.00 – 1.00

Barrow 01229 811811  
 Ulverston 01229 588111  
 Grange 015395 33316  
 Kendal 01539 734455  
 Milnthorpe 015395 62044