

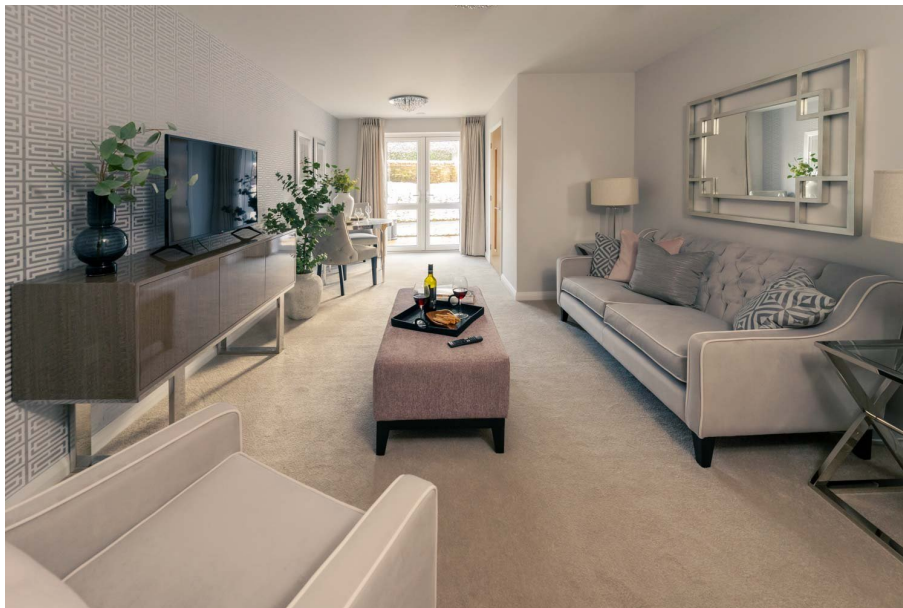
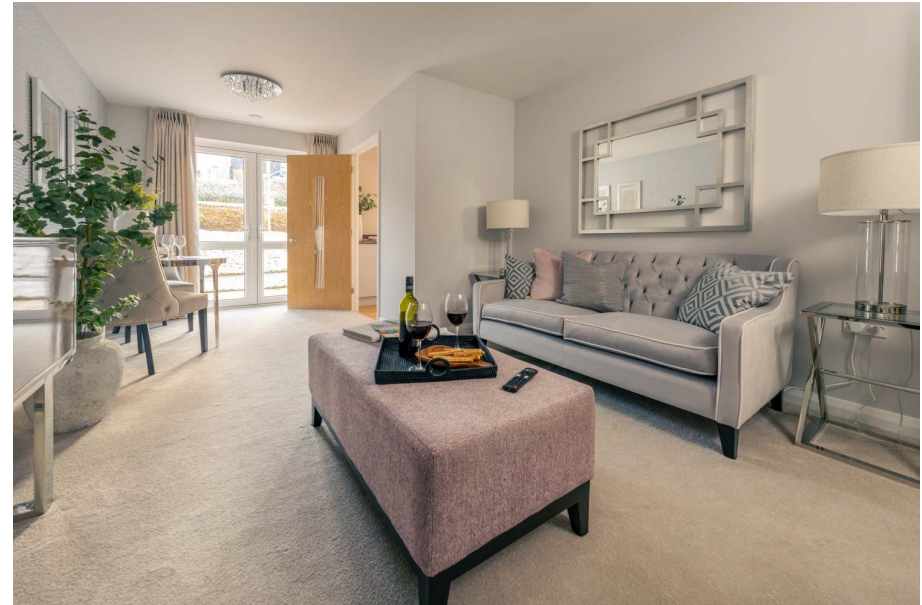


**POOLE
TOWNSEND**

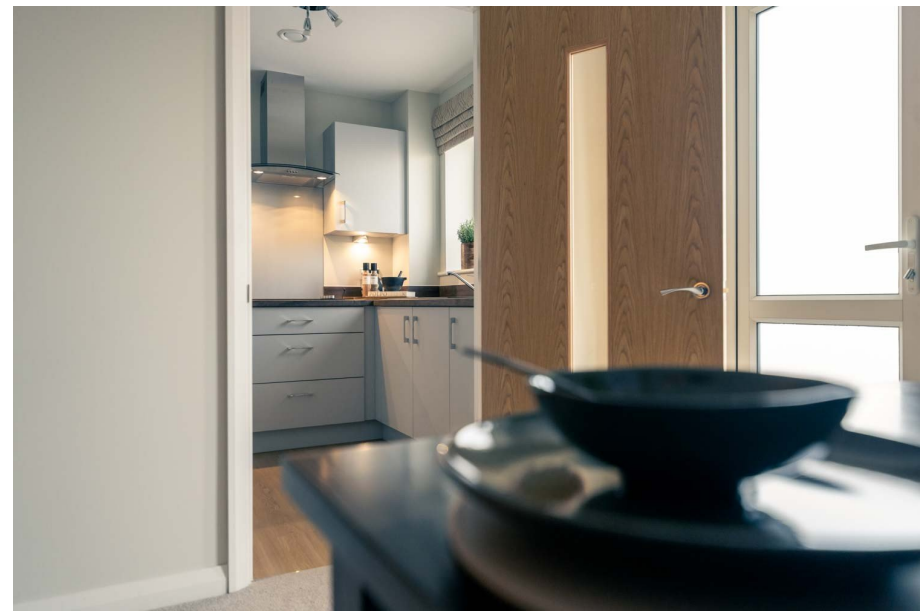
Alavana Place, Kendal

From £240,000

1 1 1



- New Build Apartments
- One and Two Bedroom Apartments Available
- Fantastic, Bright Living Space
- Only a Short Walk to Kendal Town Centre
- Communal Gardens
- Exclusive Over 60s Development
- House Manager On-Site
- 24/7 Emergency Call System
- Council Tax Band: B or C
- Tenure: Leasehold



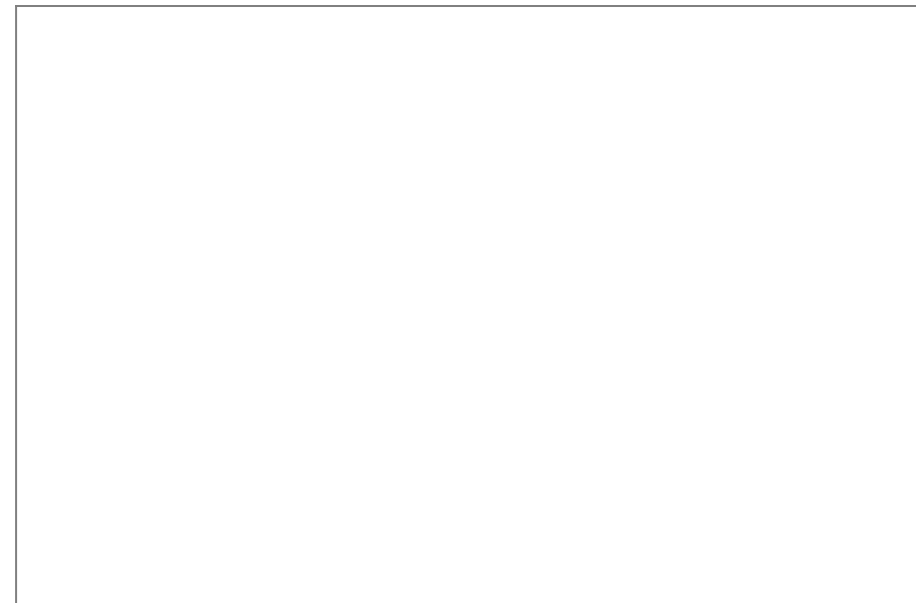


55
79.95 SQM
861 SQFT



Living (Max)	18' - 9" x 11' - 9"	5706mm x 3591mm
Kitchen (Max)	10' - 7" x 8' - 4"	3237mm x 2538mm
Bedroom 1 (Max)	13' - 2" x 9' - 6"	4010mm x 2888mm
En-Suite (Max)	6' - 9" x 7' - 3"	2051mm x 2206mm
Bedroom 2 (Max)	13' - 0" x 9' - 1"	3969mm x 2765mm
Shower (Max)	5' - 2" x 7' - 3"	1564mm x 2200mm

Stunning new build apartments, starting from £230,000, with options to purchase on the shared ownership scheme. Variety of 1 and 2 bed apartments available within walking distance to Kendal town centre and enjoying beautiful communal gardens.



Visit us at
www.pooletownsend.co.uk
enquiries@pooletownsend.co.uk

We are open
 Monday – Friday 9.00 – 5.00
 Saturday 9.00 – 1.00

Barrow 01229 811811
 Ulverston 01229 588111
 Grange 015395 33316
 Kendal 01539 734455
 Milnthorpe 015395 62044