

★ ★ ★
Mortgage Subsidy
& Part Exchange
Available
★ ★ ★



Tamworth Road,
Sawley, Nottingham
NG10 3AT

£275,000 Freehold

0115 946 1818



/robertellisestateagent



@robertellisea



Robert Ellis are pleased to be instructed to market these four brand new contemporary three bedroom homes which have their accommodation arranged on three levels. The properties are being constructed by a local developer who over the recent years has gained an excellent reputation for building high quality developments with stylish homes which will suit a wide range of buyers.

The first phase of the development includes four properties with two different external designs, but all having the same internal floor layout which people will see from the floor plans provided. Each home will be highly appointed throughout and benefiting from an efficient heating system and double glazing will be economical homes to run a far as heating and ongoing maintenance costs are concerned.

On the ground floor the spacious hall will lead into the living/dining kitchen and also a utility room and ground floor w.c. To the first floor there will be a lounge, a double bedroom and bathroom and to the second floor two further double bedrooms and a shower room. Outside there will be a private garden to the rear and two parking spaces provided for each property.

Sawley is a very popular residential area which has a number of local shops including a Co-op store on Draycott Road and other shops on Tamworth Road with more shopping facilities being found in nearby Long Eaton where there are Asda, Tesco and Aldi stores as well as many other retail outlets, there are healthcare and sports facilities which include the Trent Lock Golf Club, excellent local pubs and restaurants in Sawley and at Trent Lock, walks in the surrounding picturesque countryside and along the banks of the River Trent and the excellent transport links include junctions 24 and 25 of the M1, East Midlands Airport, which can be reached via the Skylink bus which takes you to Castle Donington and the airport, stations at Long Eaton and East Midlands Parkway and the A52 and other main roads provide good access to Nottingham, Derby and other East Midlands towns and cities.



There are steps with hand rails leading from the pavement to the stylish composite front door which has an inset opaque glazed panel and leads to:

Reception Hall

Stairs with balustrade leading to the first floor, tiled flooring which extends across the whole of the ground floor living accommodation, radiator, 4 power points, electric consumer unit mounted to one wall, double cloaks cupboard and oak panelled doors leading to the ground floor w.c., utility room and living/dining kitchen.

Utility Room

6' x 5' approx (1.83m x 1.52m approx)

The utility room is fitted with a 1½ bowl sink having a mixer tap set in a work surface with a double cupboard and space for an automatic washing machine below, Ideal boiler housed in a matching wall mounted cupboard, double glazed window to the side, radiator, tiled flooring, six power points and a point under the work surface for the washing machine.

Ground Floor w.c.

Having a white low flush w.c., hand basin with mixer tap, tiled splashback and a double cupboard under, radiator, tiled flooring and opaque double glazed window.

Living/Dining Kitchen

16' x 11' to 7' approx (4.88m x 3.35m to 2.13m approx)

The dining/living kitchen is exclusively fitted with handle-less, soft closing units and onyx work surface and includes a sink with a mixer tap and a four ring Bosch induction hob set in a work surface with cupboards, drawers and a Bosch oven under, matching eye level wall cupboards, hood and stainless steel back plate to the cooking area, double glazed sliding doors leading out to the private rear garden, double glazed window to the side, tiled flooring, TV and power points with USB sockets, recessed lighting to the ceiling, oak door leading to an understairs storage cupboard and tiled flooring.

First Floor Landing

The balustrade continues from the stairs to the landing and there is a second flight of stairs taking you to the second floor and there are 2 power points on the landing.

Lounge/Sitting Room/Bedroom

11' x 10' approx (3.35m x 3.05m approx)

This large first floor room could be used as a lounge or bedroom and has two double glazed windows to the front with a further double glazed window to the side, radiator, TV point and 8 power points, one with USB sockets.

Bedroom 3

11' x 6'10 approx (3.35m x 2.08m approx)

Double glazed window to the rear, radiator, TV point, 8 power points, one with USB sockets and a pocket sliding door the landing.

Bathroom

The luxurious bathroom has a white suite with a panelled bath with mixer taps and a mains flow shower over having a rainwater shower head and hand held shower, tiling to two walls and a protective glazed

screen, hand basin with mixer tap and two drawers under and a low flush w.c., chrome ladder towel radiator, tiled flooring, recessed lighting to the ceiling, extractor fan and an electric shaver/toothbrush point.

Second Floor Landing

The balustrade continues from the stairs onto the landing, radiator and hatch to loft.

Bedroom 1

11'8 x 9' approx (3.56m x 2.74m approx)

Having a double glazed window to the front, TV point, 8 power points with one point having USB sockets.

Bedroom 2

11' x 6'10 approx (3.35m x 2.08m approx)

Double glazed window to the rear, radiator, TV point, 8 power points, one having USB sockets and a pocket sliding door to the landing.

Shower Room

There is a Jack and Jill shower room, which connects to both bedrooms that has a large walk-in shower with a mains flow shower system including a rainwater shower head and a hand held shower, tiling to two walls and a sliding glazed door with protective screens, hand basin with mixer tap and two drawers under and a low flush w.c., tiling to the walls by the sink and w.c. areas, chrome heated ladder towel radiator, tiled flooring, opaque double glazed window, recessed lighting to the ceiling, extractor fan and tiled flooring.

Outside

At the front of the property there are steps with hand rails leading to the front door and easily managed bark borders which have planting.

At the rear there is a slabbed patio to the immediate rear of the house with a pathway leading down to the gate at the bottom of the garden which leads to the parking behind the property, there is a lawn and the garden is kept private by having fencing to the boundaries. There are external power points, an outside water supply and external lighting provided.

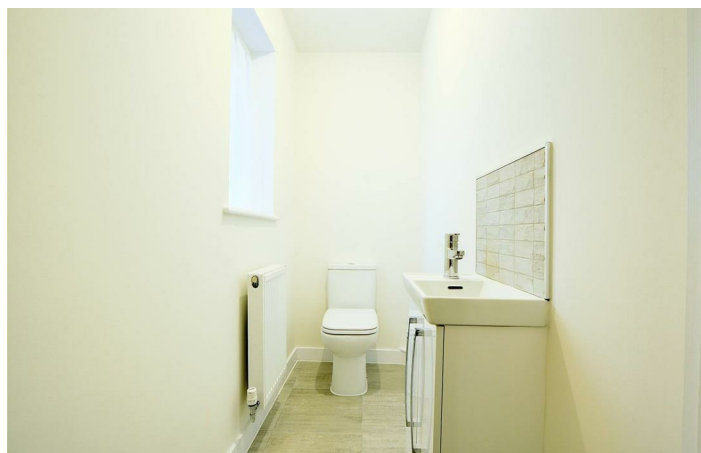
Directions

Proceed out of Long Eaton along Tamworth Road and at the traffic island continue straight over and into Sawley. Follow Tamworth Road for some distance and after the bend the property can be found on the right hand side.

7464AMMP

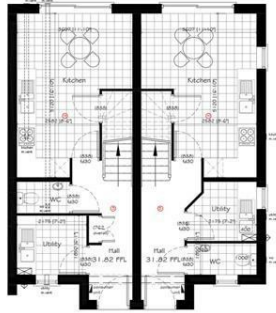
Agents Notes

Internal photos for illustration only.

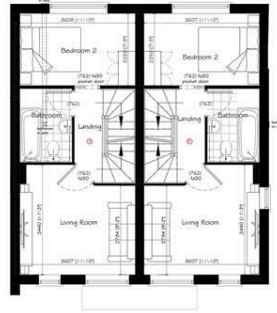




GROUND FLOOR



FIRST FLOOR



SECOND FLOOR



GROUND FLOOR

Kitchen/Diner	3.65m (max) x 5.12m (max)
Utility	2.17m x 1.85m
Ground floor total	30.9m²

1ST FLOOR

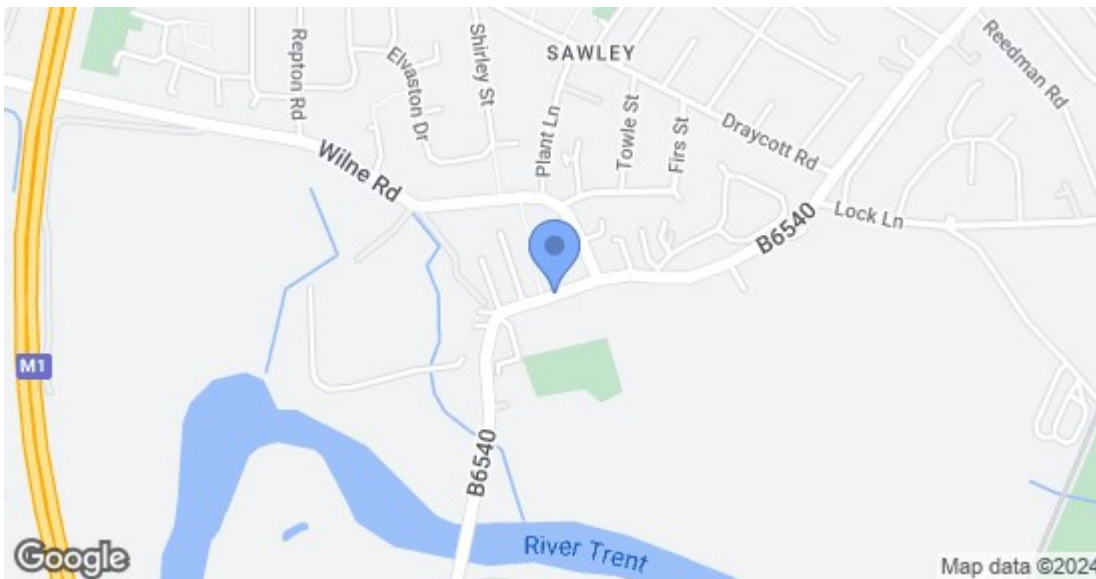
Living Room	3.65m x 3.44m (max)
Bedroom 2	3.65m x 2.25m
First floor total	29.8m²

2ND FLOOR

Master Bedroom	3.65m x 2.90m (max)
Bedroom 3	3.65m x 2.25m
Second floor total	29.8m²

TOTAL 90.5m²

Illustrations for identification purposes only; measurements are approximate, not to scale.



Energy Efficiency Rating		Current	Potential
<i>Very energy efficient - lower running costs</i>			
(92 plus) A			
(81-91) B			
(69-80) C			
(55-68) D			
(39-54) E			
(21-38) F			
(1-20) G			
<i>Not energy efficient - higher running costs</i>			
England & Wales		EU Directive 2002/91/EC	
Environmental Impact (CO ₂) Rating		Current	Potential
<i>Very environmentally friendly - lower CO₂ emissions</i>			
(92 plus) A			
(81-91) B			
(69-80) C			
(55-68) D			
(39-54) E			
(21-38) F			
(1-20) G			
<i>Not environmentally friendly - higher CO₂ emissions</i>			
England & Wales		EU Directive 2002/91/EC	

These details are for guidance only and complete accuracy cannot be guaranteed. If there is any point, which is of particular importance, verification should be obtained. All measurements are approximate. No guarantee can be given with regard to planning permissions or fitness for purpose. No apparatus, equipment, fixture or fitting has been tested.