

Park Row



St. James Terrace, Selby, YO8 4HL

£200,000



Ripe for renovation with character features! Situated in Selby town centre, this property briefly comprises: Hallway, Lounge, Dining Room and Kitchen. To the First Floor: four bedrooms, w.c and Bathroom. **VIEWING IS ESSENTIAL TO FULLY APPRECIATE THE POSITION OF PROPERTY ON OFFER. RING US 7 DAYS TO BOOK A VIEWING. 'WE OPEN UNTIL 8PM MONDAY TO THURSDAY, 5.30 FRIDAYS, 5.00 SATURDAYS AND 11.00 - 3.00 SUNDAYS!**



PROPERTY OVERVIEW

Situated in the heart of Selby Town Centre, this charming Victorian mid-terrace property presents a fantastic opportunity for those looking to modernise a historic gem. While the home is ready for refurbishment, it retains a wealth of original features that celebrate its heritage. You'll find exquisite balustrades and turned spindles adorning the stairs and landing, elegant cornices and ceiling roses gracing many of the rooms, and traditional timber panels on the windows that offer a glimpse into the past. This property is ideal for those seeking to blend contemporary comforts with classic character in a vibrant and convenient location. Offered with no upward chain.

GROUND FLOOR ACCOMMODATION

Hallway

Lounge

16'3" x 13'11" (4.96m x 4.26m)

Dining Room

13'11" x 13'8" (4.26m x 4.17m)

Kitchen

21'4" x 11'7" (6.51m x 3.55m)

FIRST FLOOR ACCOMMODATION

Bedroom One

15'11" x 11'9" (4.86m x 3.59m)

Bedroom Two

13'11" x 13'8" (4.26m x 4.19m)

Bedroom Three

11'6" x 10'1" (3.51m x 3.09m)

Bedroom Four

14'0" x 8'5" (4.28m x 2.58m)

Bathroom

7'6" x 7'2" (2.31m x 2.19m)

W.C

7'6" x 3'6" (2.29m x 1.07m)

EXTERIOR

Front



Garden to front.

Rear

Courtyard area.

TENURE, LOCAL AUTHORITY AND TAX BANDING

Tenure: Freehold

Local Authority: North Yorkshire Council

Tax Banding: C

Please note: The Tenure, Local Authority and Tax Banding for the property have been advised by the Vendor or obtained from online sources. We strive to ensure these details are accurate and reliable, however, we advise any potential buyer to carry out their own enquiries before proceeding.

UTILITIES, BROADBAND AND MOBILE COVERAGE

Electricity: Mains

Gas: Mains

Sewerage: Mains

Water: Mains

Broadband: Ultrafast

Mobile: Some 5G Available

Please note: The Utilities, Broadband and Mobile Coverage for the property have been advised by the Vendor or obtained from online sources. We strive to ensure these details are accurate and reliable, however, we advise any potential buyer to carry out their own enquiries before proceeding.

HEATING & APPLIANCES

The heating system and any appliances (including Burglar Alarms where fitted) mentioned in this brochure have not been tested by Park Row Properties. If you are interested in purchasing the property we advise that you have all services and appliances tested before entering a legal commitment to purchase.

MAKING AN OFFER

In order to comply with the Estate Agents (Undesirable

Practises) Order 1991, Park Row Properties are required to verify "the status of any prospective purchaser... This includes the financial standing of that purchaser and his ability to exchange contracts". To allow us to comply with this order and before recommending acceptance of any offers, and subsequently making the property 'SOLD' each prospective purchaser will be required to demonstrate to 'Park Row Properties' that they are financially able to proceed with the purchase of the property. We provide truly Independent Mortgage Advice. Unlike many companies we are not tied, and more importantly not targeted to any Lender. We have instant on-line access to over 1000 mortgage deals provided by over 100 Lenders ensuring we are unbeatable when identifying and recommending your new mortgage or re-mortgage requirements.

Your home is at risk if you do not keep up repayments on a mortgage or other loan secured on it. Written quotations available on request. Life assurance is usually required. To arrange a no obligation appointment please contact your local office.

MEASUREMENTS

These approximate room sizes are only intended as general guidance. You must verify the dimensions carefully before ordering carpets or any built-in furniture.

OPENING HOURS

CALLS ANSWERED :

Mon, Tues, Wed & Thurs - 9.00am to 8.00pm

Friday - 9.00am to 5.30pm

Saturday - 9.00am to 5.00pm

Sunday - 11.00am to 3.00pm

TO CHECK OFFICE OPENING HOURS PLEASE CONTACT THE RELEVANT BRANCHES ON:

GOOLE - 01405 761199

SELBY - 01757 241124

SHERBURN IN ELMET - 01977 681122

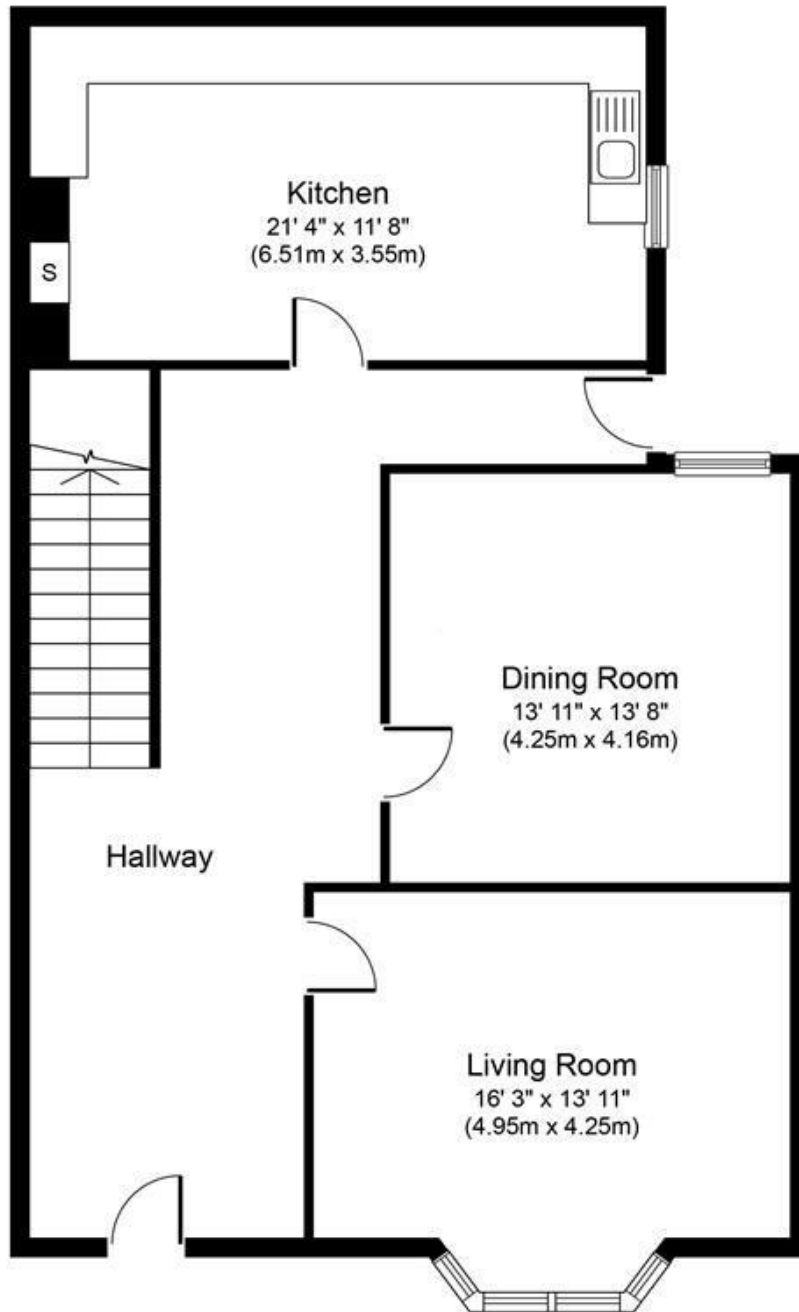
PONTEFRACT - 01977 791133

CASTLEFORD - 01977 558480

VIEWINGS

Strictly by appointment with the sole agents.

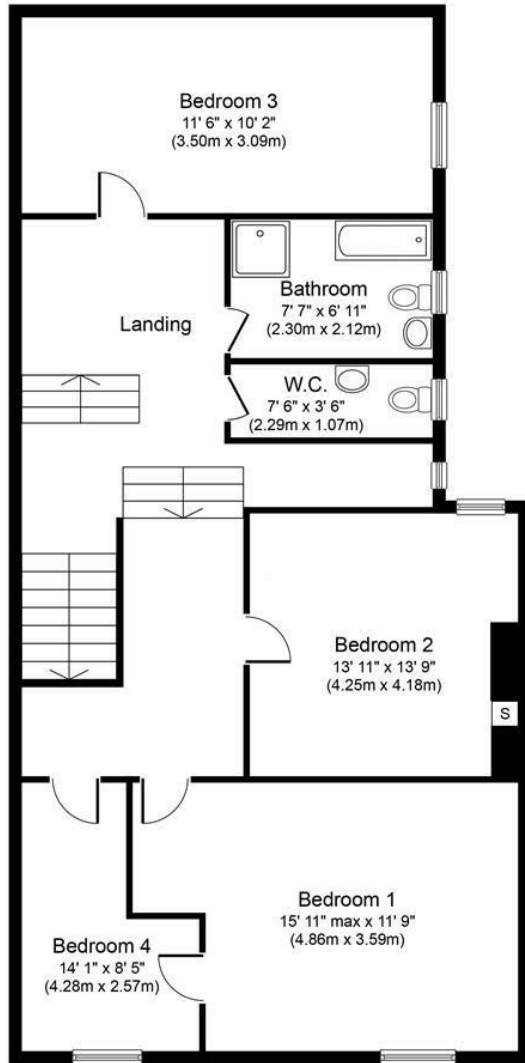
If there is any point of particular importance to you we will be pleased to provide additional information or to make any further enquiries. We will also confirm that the property remains available. This is particularly important if you are travelling some distance to view the property.



Ground Floor
Approximate Floor Area
1,008 sq. ft.
(93.7 sq. m.)

Whilst every attempt has been made to ensure the accuracy of the floor plan contained here, measurements of doors, windows, rooms and any other items are approximate and no responsibility is taken for any error, omission, or mis-statement. The measurements should not be relied upon for valuation, transaction and/or funding purposes. This plan is for illustrative purposes only and should be used as such by any prospective purchaser or tenant. The services, systems and appliances shown have not been tested and no guarantee as to their operability or efficiency can be given.

Copyright V360 Ltd 2024 | www.houseviz.com



First Floor
Approximate Floor Area
1,271 sq. ft.
(118.0 sq. m.)

Whilst every attempt has been made to ensure the accuracy of the floor plan contained here, measurements of doors, windows, rooms and any other items are approximate and no responsibility is taken for any error, omission, or mis-statement. The measurements should not be relied upon for valuation, transaction and/or funding purposes. This plan is for illustrative purposes only and should be used as such by any prospective purchaser or tenant. The services, systems and appliances shown have not been tested and no guarantee as to their operability or efficiency can be given.
Copyright V360 Ltd 2024 | www.houseviz.com

T 01757 241124
W www.parkrow.co.uk

14 Finkle Street, Selby, North Yorkshire, YO8 4DS
selby@parkrow.co.uk

