

# Park Row



**Micklegate, Selby, YO8 4EQ**

**Offers Over £150,000**

**\*\* CAFE WITH LIVING ACCOMMODATION ABOVE \*\* IDEAL INVESTMENT OPPORTUNITY \*\*** This property is situated in Selby Town Centre and is full of potential. The property is currently running as a Cafe to the Ground Floor which comprises of: Seating Area, Kitchen, Utility and Storage Areas. The First Floor is where the Customer Toilets are located, and there is also a One Bedroom Apartment. There is also an additional Attic Room to the Second Floor. **VIEWING IS HIGHLY RECOMMENDED TO FULLY APPRECIATE THE PROPERTY ON OFFER. RING US 7 DAYS TO BOOK A VIEWING. 'WE OPEN UNTIL 8PM MONDAY TO THURSDAY, 5.30 FRIDAYS, 5.00 SATURDAYS AND 11.00 - 3.00 SUNDAYS'.**



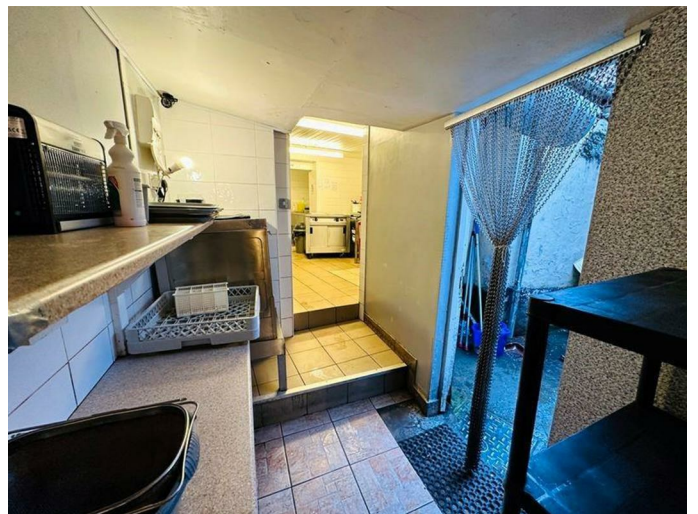
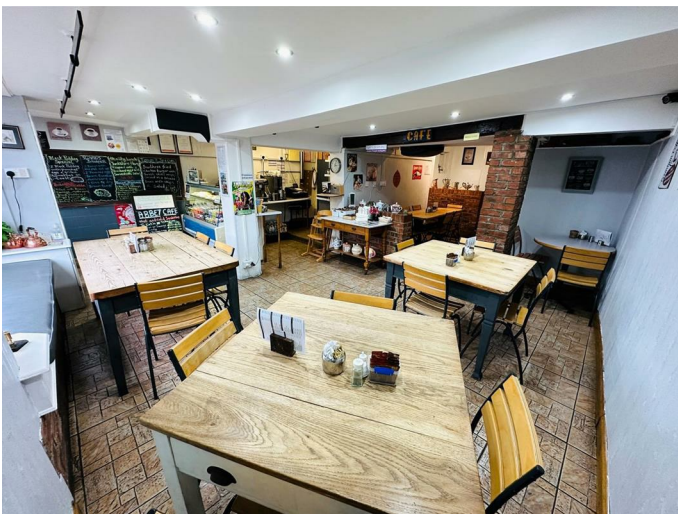
## GROUND FLOOR ACCOMMODATION- Seating Areas



## Kitchen



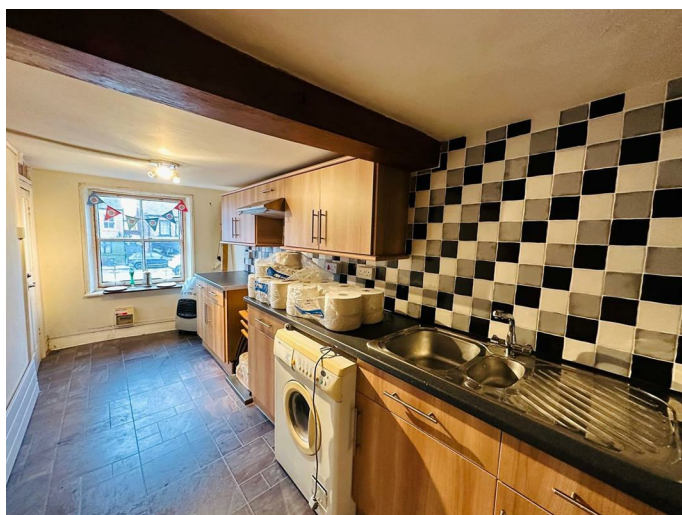
## Utility



## FIRST FLOOR ACCOMMODATION- Customer Toilets



## Apartment Kitchen



## EXTERIOR



## DIRECTIONS

Leave our office on Finkle Street, and proceed onto Micklegate. The property can be identified by a Park Row 'For Sale' board.

## TENURE, LOCAL AUTHORITY & TAX BAND

Tenure: Freehold  
Local Authority: North Yorkshire Council

Please note: The Tenure and Local Authority for the property have been advised by the Vendor or obtained from online sources. We strive to ensure these details are accurate and reliable, however, we advise any potential buyer to carry out their own enquiries before proceeding.

## UTILITIES, BROADBAND & MOBILE COVERAGE

Electricity: Mains  
Gas: Mains  
Sewerage: Mains  
Water: Mains

Broadband: Superfast  
Mobile: 4G

Please note: The Utilities, Broadband and Mobile Coverage for the property have been advised by the Vendor or obtained from online sources. We strive to ensure these details are accurate and reliable, however, we advise any potential buyer to carry out their own enquiries before proceeding.

## HEATING & APPLIANCES

The heating system and any appliances (including Burglar Alarms where fitted) mentioned in this brochure have not been tested by Park Row Properties. If you are interested in purchasing the property we advise that you have all services and appliances tested before entering a legal commitment to purchase.

## MAKING AN OFFER

In order to comply with the Estate Agents (Undesirable

Practises) Order 1991, Park Row Properties are required to verify "the status of any prospective purchaser... This includes the financial standing of that purchaser and his ability to exchange contracts". To allow us to comply with this order and before recommending acceptance of any offers, and subsequently making the property 'SOLD' each prospective purchaser will be required to demonstrate to 'Park Row Properties' that they are financially able to proceed with the purchase of the property.

We provide truly Independent Mortgage Advice. Unlike many companies we are not tied, and more importantly not targeted to any Lender. We have instant on-line access to over 1000 mortgage deals provided by over 100 Lenders ensuring we are unbeatable when identifying and recommending your new mortgage or re-mortgage requirements.

Your home is at risk if you do not keep up repayments on a mortgage or other loan secured on it. Written quotations available on request. Life assurance is usually required. To arrange a no obligation appointment please contact your local office.

## MEASUREMENTS

These approximate room sizes are only intended as general guidance. You must verify the dimensions carefully before ordering carpets or any built-in furniture.

## OPENING HOURS

CALLS ANSWERED :

Mon, Tues, Wed & Thurs - 9.00am to 8.00pm

Friday - 9.00am to 5.30pm

Saturday - 9.00am to 5.00pm

Sunday - 11.00am to 3.00pm

TO CHECK OFFICE OPENING HOURS PLEASE CONTACT THE RELEVANT BRANCHES ON:

GOOLE - 01405 761199

SELBY - 01757 241124

SHERBURN IN ELMET - 01977 681122

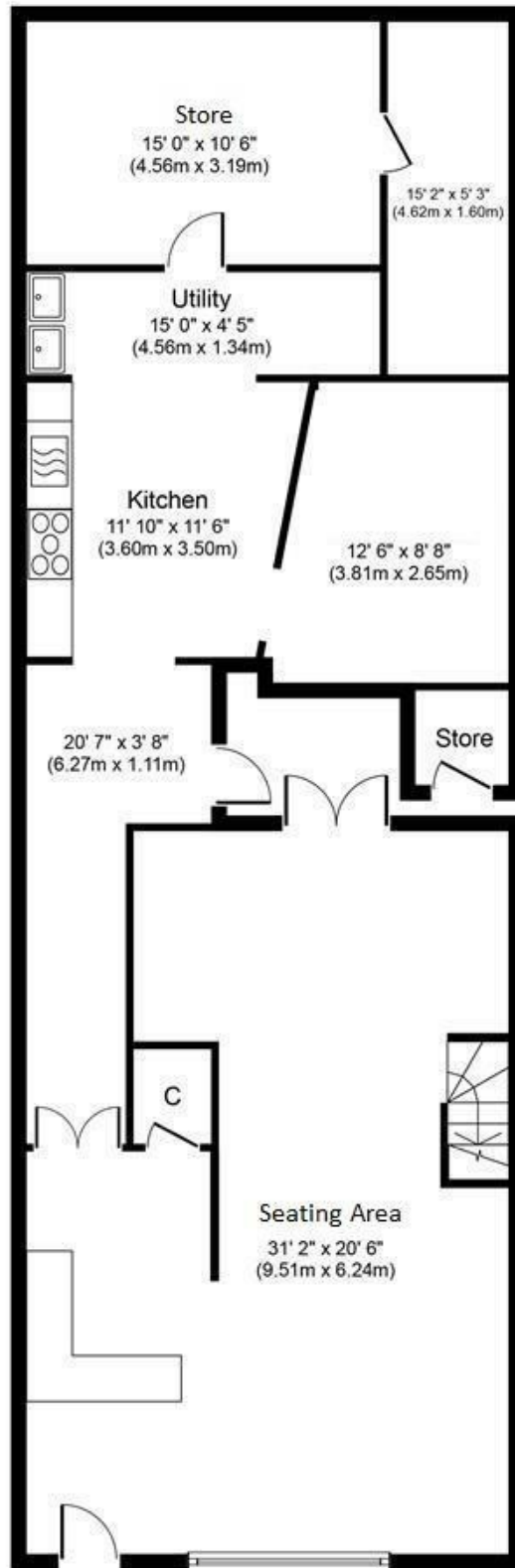
PONTEFRACT - 01977 791133

CASTLEFORD - 01977 558480

## VIEWINGS

Strictly by appointment with the sole agents.

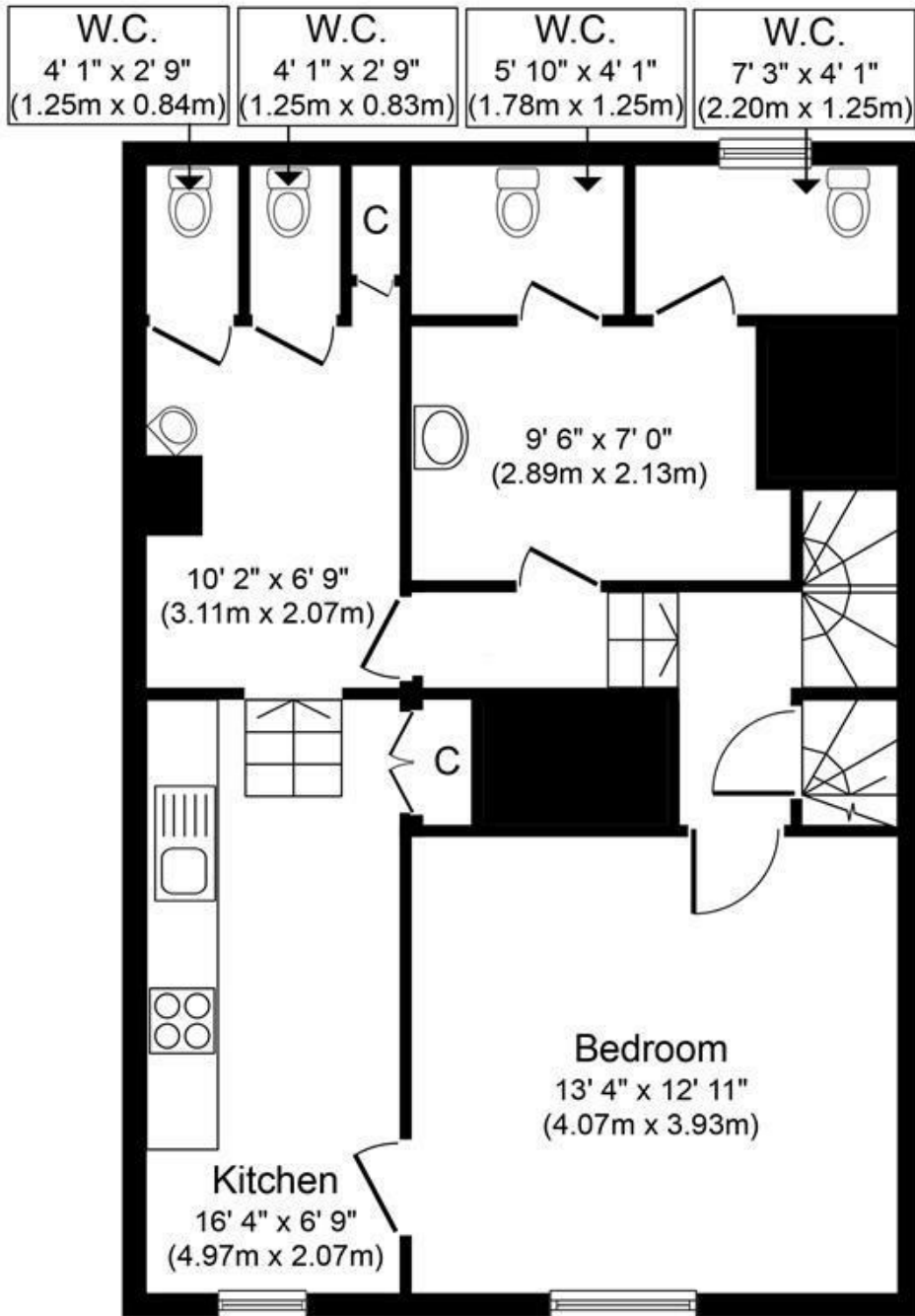
If there is any point of particular importance to you we will be pleased to provide additional information or to make any further enquiries. We will also confirm that the property remains available. This is particularly important if you are travelling some distance to view the property.



**Ground Floor**  
**Approximate Floor Area**  
**1,296 sq. ft.**  
**(120.4 sq. m.)**

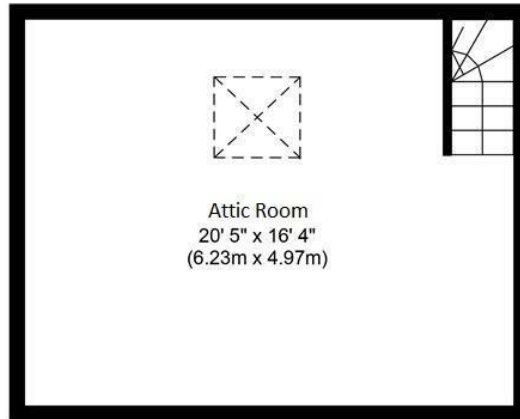
Whilst every attempt has been made to ensure the accuracy of the floor plan contained here, measurements of doors, windows, rooms and any other items are approximate and no responsibility is taken for any error, omission, or mis-statement. The measurements should not be relied upon for valuation, transaction and/or funding purposes. This plan is for illustrative purposes only and should be used as such by any prospective purchaser or tenant. The services, systems and appliances shown have not been tested and no guarantee as to their operability or efficiency can be given.

Copyright V360 Ltd 2024 | [www.houseviz.com](http://www.houseviz.com)



**First Floor**  
**Approximate Floor Area**  
**643 sq. ft.**  
**((59.7 sq. m.))**

Whilst every attempt has been made to ensure the accuracy of the floor plan contained here, measurements of doors, windows, rooms and any other items are approximate and no responsibility is taken for any error, omission, or mis-statement. The measurements should not be relied upon for valuation, transaction and/or funding purposes. This plan is for illustrative purposes only and should be used as such by any prospective purchaser or tenant. The services, systems and appliances shown have not been tested and no guarantee as to their operability or efficiency can be given.  
 Copyright V360 Ltd 2024 | [www.houseviz.com](http://www.houseviz.com)



**Second Floor**  
**Approximate Floor Area**  
**334 sq. ft.**  
**(31.4 sq. m.)**

Whilst every attempt has been made to ensure the accuracy of the floor plan contained here, measurements of doors, windows, rooms and any other items are approximate and no responsibility is taken for any error, omission, or mis-statement. The measurements should not be relied upon for valuation, transaction and/or funding purposes. This plan is for illustrative purposes only and should be used as such by any prospective purchaser or tenant. The services, systems and appliances shown have not been tested and no guarantee as to their operability or efficiency can be given.  
 Copyright V360 Ltd 2024 | www.houseviz.com

**T** 01757 241124  
**W** www.parkrow.co.uk

14 Finkle Street, Selby, North Yorkshire, YO8 4DS  
 selby@parkrow.co.uk

Energy Efficiency Rating		Environmental Impact (CO <sub>2</sub> ) Rating			
Very energy efficient - lower running costs	Current	Potential	Very environmentally friendly - lower CO <sub>2</sub> emissions	Current	Potential
92-100 A			92-100 A		
81-91 B			81-91 B		
69-80 C			69-80 C		
55-68 D			55-68 D		
39-54 E			39-54 E		
21-38 F			21-38 F		
1-20 G			1-20 G		
Not energy efficient - higher running costs			Not environmentally friendly - higher CO <sub>2</sub> emissions		
England & Wales		EU Directive 2002/91/EC		England & Wales	
				EU Directive 2009/33/EC	