



Pooley Green Road, Egham, Surrey, TW20 8AF

£650,000 F/H



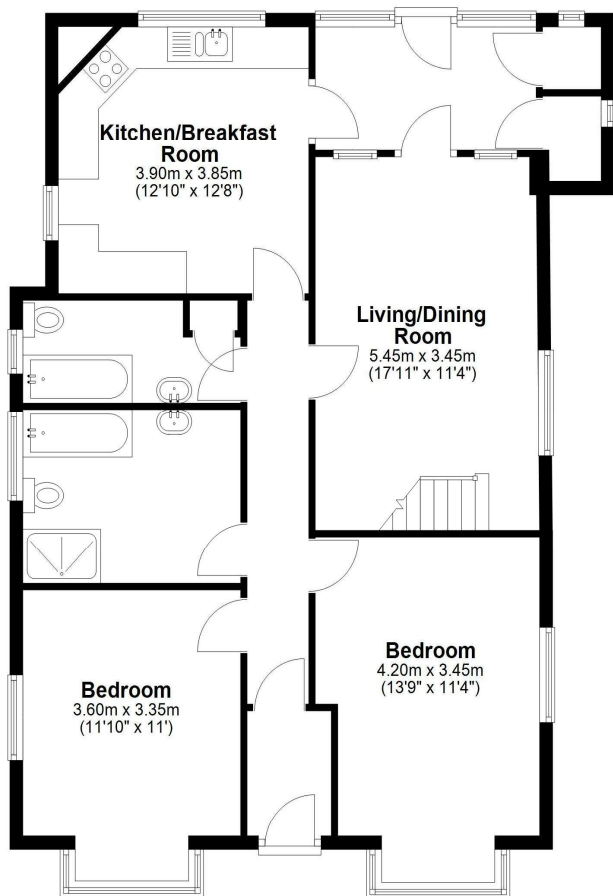
A very well proportioned and spacious chalet style detached residence located within a short walk of Egham High Street amenities, Magna Square, The Orbit Sports and Swimming facilities and mainline train station. Accommodation comprises entrance hallway, 18ft living/dining room, 13ft kitchen/breakfast room, four double bedrooms, three bathrooms, garden room, 150ft rear garden and off street parking for up to five vehicles.

Pooley Green Road, Egham, Surrey, TW20 8AF

FLOOR PLAN

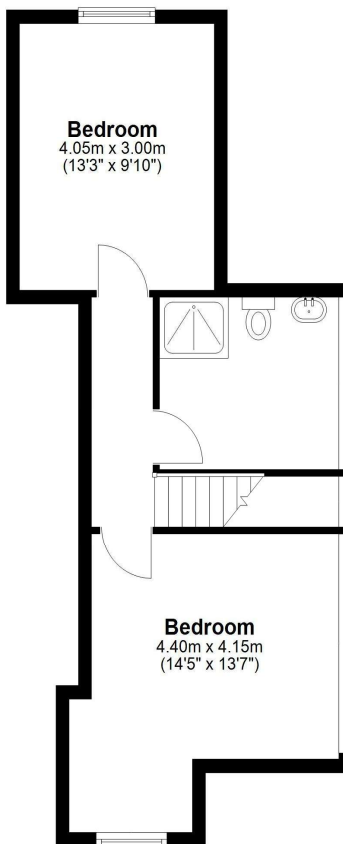
Ground Floor

Approx. 95.1 sq. metres (1023.9 sq. feet)



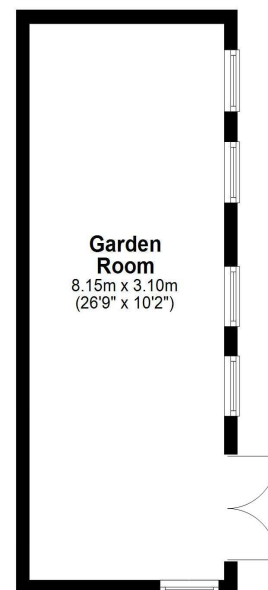
First Floor

Approx. 40.3 sq. metres (434.2 sq. feet)



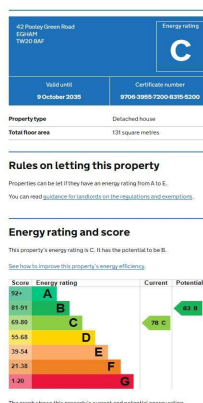
Garden Room

Approx. 25.3 sq. metres (272.0 sq. feet)



Total area: approx. 160.7 sq. metres (1730.1 sq. feet)

EPC



COUNCIL TAX BAND:

C - Runnymede Borough Council

VIEWINGS:

**By appointment with the clients selling agents,
Nevin & Wells Residential on 01784 437 437 or
visit www.nevinandwells.co.uk**



All measurements are approximate. Nevin & Wells Residential have not tested any systems or appliances.