



**Medlake Road, Egham, Surrey, TW20 8HU**

**£500,000 F/H**



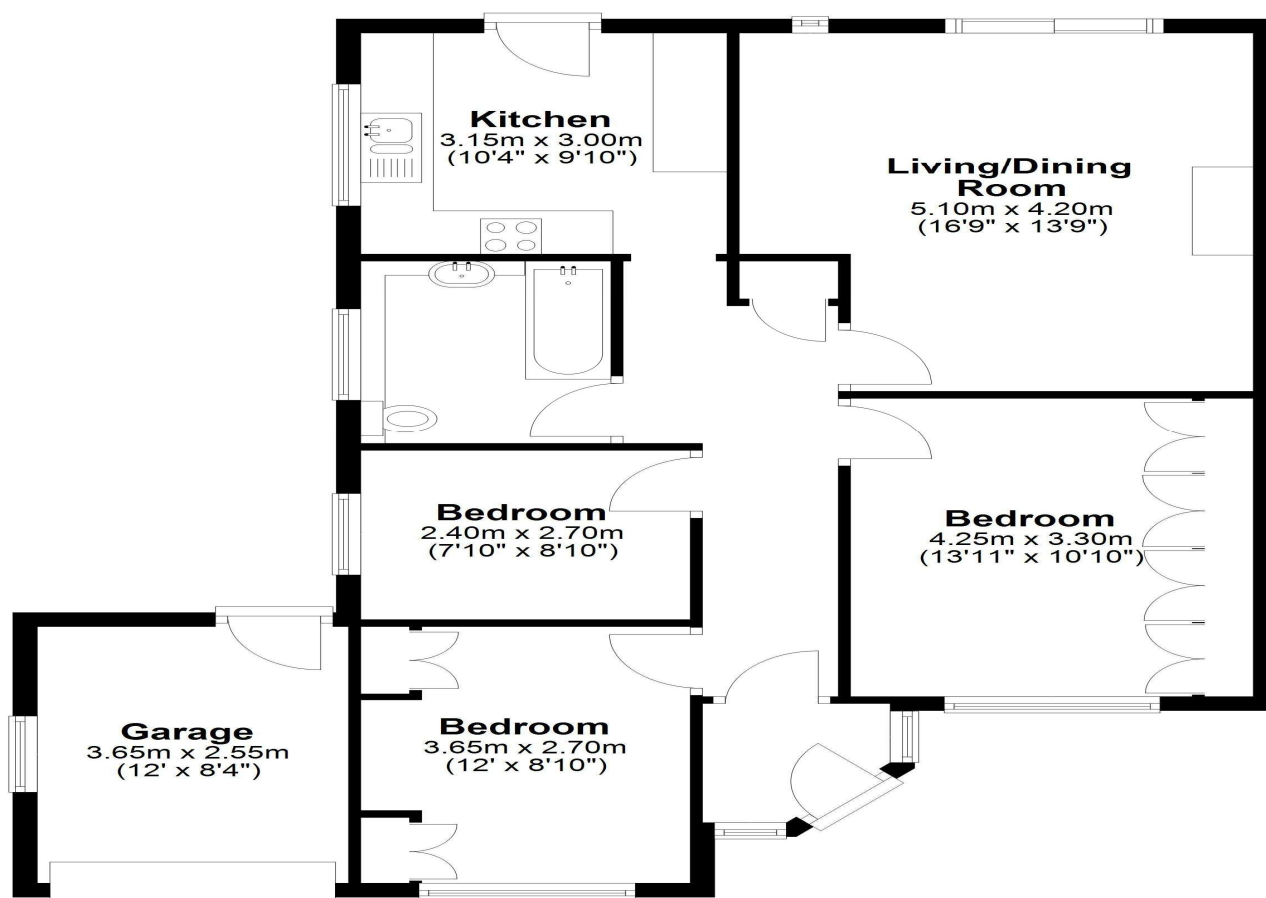
A lovely three bedroom semi-detached bungalow situated in a quiet residential road close to shops and schools. This property has a replacement bathroom and kitchen, gas central heating and room to extend into the garage or roof (S.T.P.P). Ample parking to the front and being sold with the huge benefit of NO ONWARD CHAIN.

Medlake Road, Egham, Surrey, TW20 8HU

## FLOOR PLAN

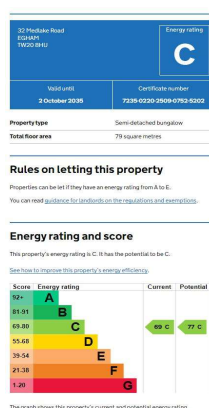
### **Ground Floor**

Approx. 88.5 sq. metres (952.8 sq. feet)



Total area: approx. 88.5 sq. metres (952.8 sq. feet)

## EPC



COUNCIL TAX BAND:

E - Runnymede Borough Council

VIEWINGS:

By appointment with the clients selling agents,  
Nevin & Wells Residential on 01784 437 437 or  
visit [www.nevinandwells.co.uk](http://www.nevinandwells.co.uk)



All measurements are approximate. Nevin & Wells Residential have not tested any systems or appliances.