



**St Judes Road, Englefield Green, TW20 0BT**

**£375,000 F/H**



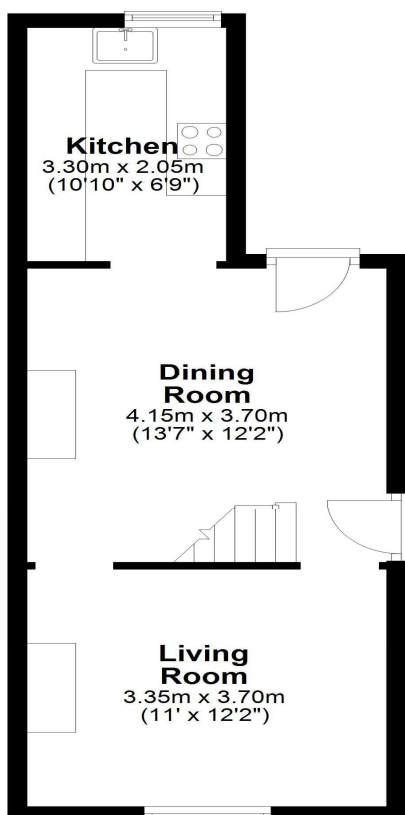
Built circa 1900 is this character semi- detached residence with off street parking for one vehicle. The property is in need of modernisation throughout but offers an excellent opportunity to extend or loft convert (Subject to planning permission). accommodation comprises entrance hall, two reception rooms, first floor bathroom and a private rear garden. No onward chain.

**St Judes Road, Englefield Green, Surrey, TW20 0BT**

**FLOOR PLAN**

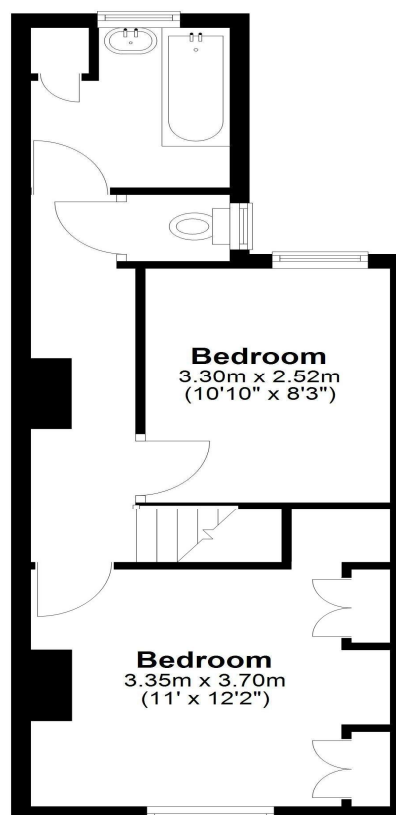
**Ground Floor**

Approx. 35.1 sq. metres (377.7 sq. feet)



**First Floor**

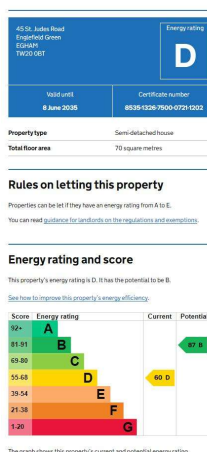
Approx. 35.1 sq. metres (377.7 sq. feet)



Total area: approx. 70.2 sq. metres (755.5 sq. feet)

All measurements are approximate. Nevin & Wells Residential have not tested any systems or appliances.

**EPC**



**COUNCIL TAX BAND:**

**D - Runnymede Borough Council**

**VIEWINGS:**

**By appointment with the clients selling agents,  
Nevin & Wells Residential on 01784 437 437 or  
visit [www.nevinandwells.co.uk](http://www.nevinandwells.co.uk)**

