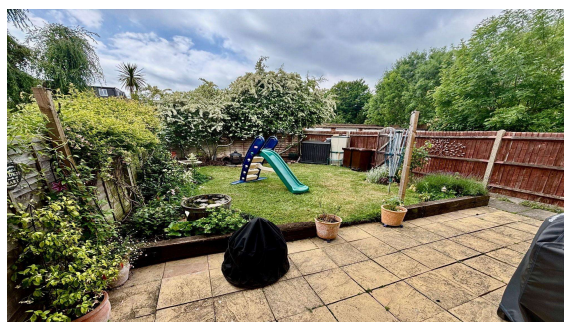
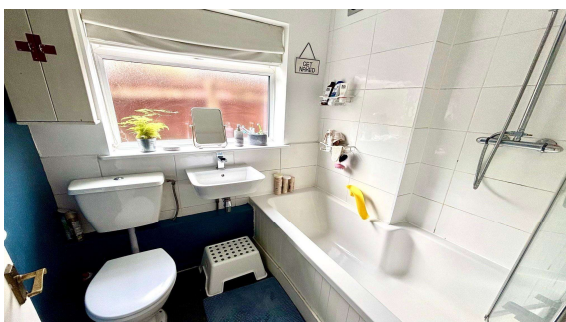
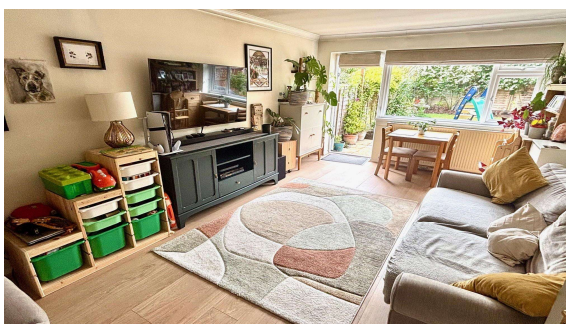




Glebe Road, Egham, Surrey, TW20 8BU

£325,000 Leasehold



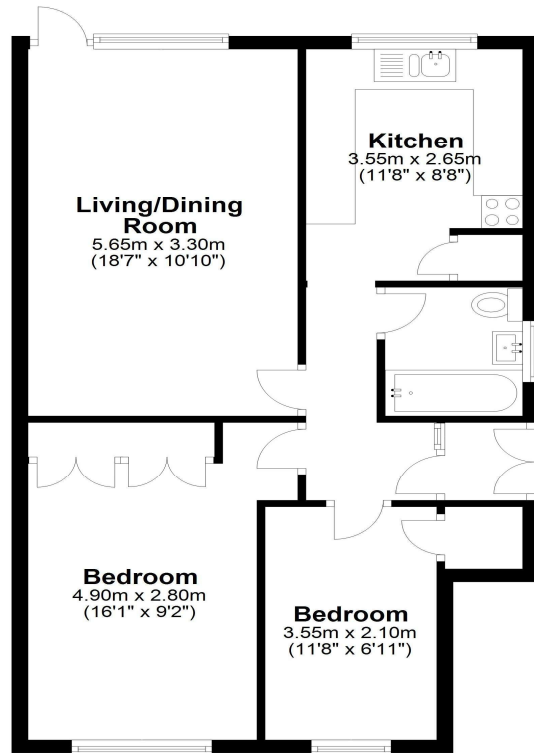
This stunning two bedroom ground floor maisonette boasts its own private rear garden and garage in nearby block. Offering a perfect blend of space, tranquillity and convenience, with its own entrance, this property provides residents with a sense of independence and modern living.

Glebe Road, Egham, Surrey, TW20 8BU

FLOOR PLAN

Ground Floor

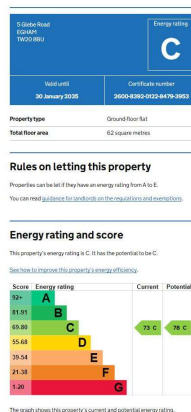
Approx. 61.6 sq. metres (662.7 sq. feet)



Total area: approx. 61.6 sq. metres (662.7 sq. feet)

All measurements are approximate. Nevin & Wells Residential have not tested any systems or appliances.

EPC



COUNCIL TAX BAND:

D - Runnymede Borough Council

LEASE:

approx. 144 years remaining (Awaiting written Confirmation)

GROUND RENT:

£20 per annum (awaiting written confirmation)

VIEWINGS:

By appointment with the clients selling agents,
Nevin & Wells Residential on 01784 437 437 or
visit www.nevinandwells.co.uk

