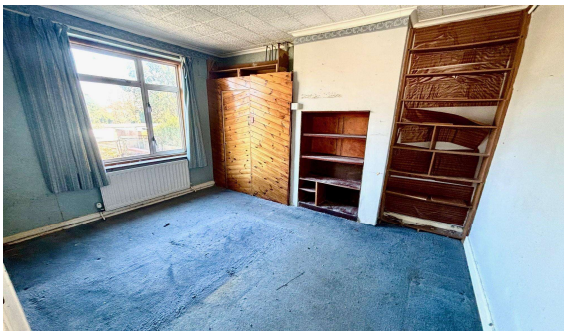
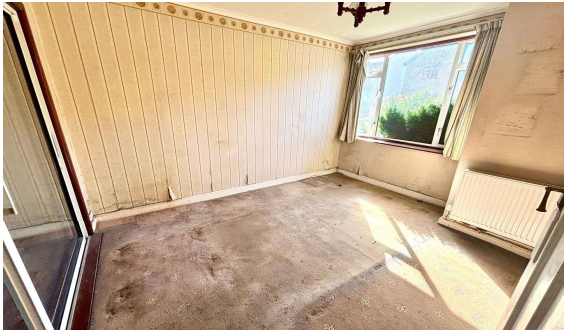




Hythe Park Road, Egham, TW20 8DA

O.I.E.O £325,000 F/H



For sale by Open House only is this Circa 1930's three bedroom semi-detached residence in need of complete renovation throughout. Accommodation comprises entry hallway, lounge/ dining room, kitchen, first floor bathroom and a private rear garden of approximately 100ft. No onward chain.

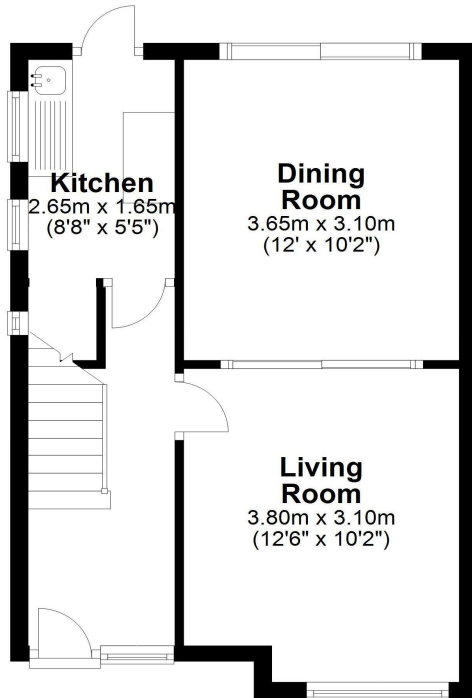
(For dates and times, call or email sole agents Nevin and Wells Residential.)

Hythe Park Road, Egham, Surrey, TW20 8DA

FLOOR PLAN

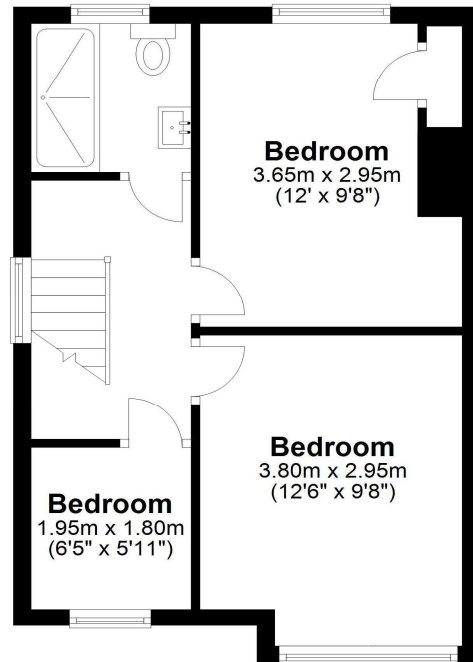
Ground Floor

Approx. 35.3 sq. metres (380.2 sq. feet)



First Floor

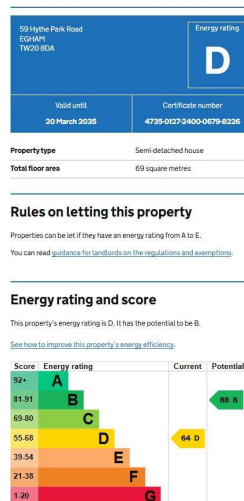
Approx. 35.3 sq. metres (379.7 sq. feet)



Total area: approx. 70.6 sq. metres (759.9 sq. feet)

All measurements are approximate. Nevin & Wells Residential have not tested any systems or appliances.

EPC



COUNCIL TAX BAND:

D - Runnymede Borough Council

VIEWINGS:

**By appointment with the clients selling agents,
Nevin & Wells Residential on 01784 437 437 or
visit www.nevinandwells.co.uk**