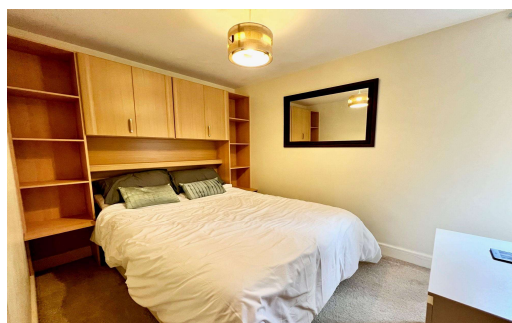
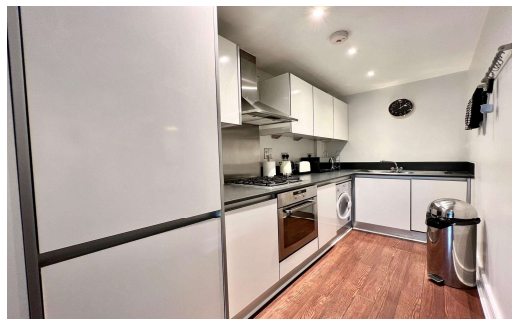
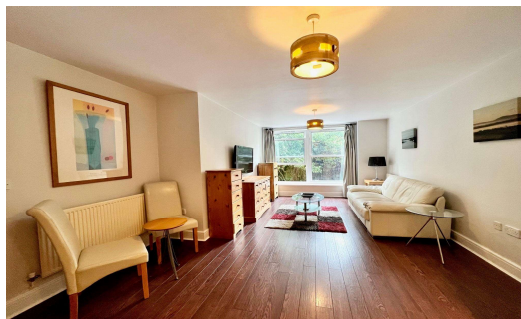




**Steeple Court, Egham, Surrey, TW20 9GL**

**£298,000 L/H**



A ground floor two bedroom, two bathroom apartment built circa 2005 by Messrs King Oak located in Central Egham, just minutes walk from the train station and recently regenerated High Street. The property comprises entrance hallway, replacement fully fitted kitchen open plan to lounge, family bathroom, ensuite shower to bedroom one. Further benefits include double glazing and gas central heating throughout, along with an allocated parking space.

# Steeple Court, Vicarage Road, Egham, Surrey, TW20 9GL

## FLOOR PLAN

Approximate Area = 672 sq ft / 62.4 sq m  
For identification only - Not to scale



Ground floor



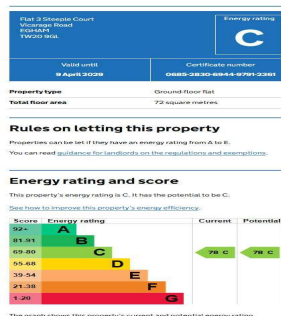
Certified  
Property  
Measurer

Floor plan produced in accordance with RICS Property Measurement Standards incorporating International Property Measurement Standards (IPMS2 Residential). ©richecom 2021. Produced for Chancellors Estate Agents REF: 770327



All measurements are approximate. Nevin & Wells Residential have not tested any systems or appliances.

## EPC



COUNCIL TAX BAND: D - Runnymede Borough Council

LEASE: 135 years remaining

GROUND RENT: £300 per annum

SERVICE CHARGE: £186.22 pcm

VIEWINGS:

By appointment with the clients selling agents, Nevin & Wells Residential on 01784 437 437 or visit [www.nevinandwells.co.uk](http://www.nevinandwells.co.uk)

