



**Orchid Court, Egham, Surrey, TW20 9HA    £160,000 Leasehold**

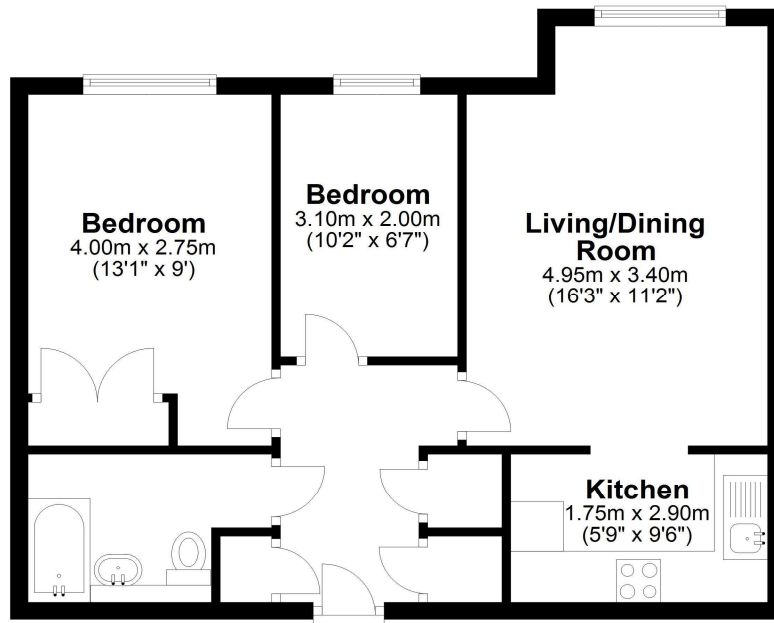


A superbly presented two bedroom ground floor apartment flat, situated minutes from High Street shops and doctors surgery. Benefits include large lounge, fitted kitchen, modern shower room, electric heating, double glazing and 'share of freehold' with a 990 year head lease. Access to leisure centre, mainline station and Runnymede National Trust is close at hand. **Over 60's only.** Share of freehold

## Orchid Court, Albany Place, Egham, TW20 9HA

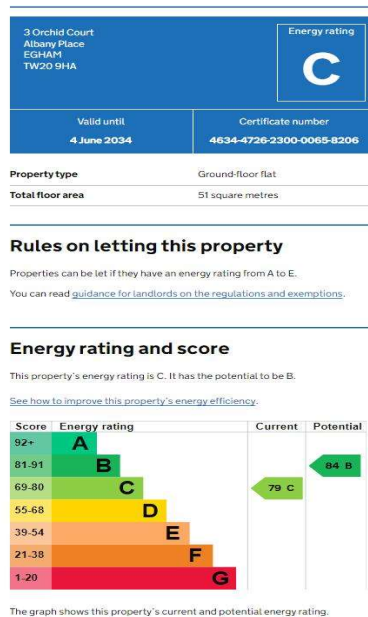
### Ground Floor

Approx. 51.6 sq. metres (555.5 sq. feet)



Total area: approx. 51.6 sq. metres (555.5 sq. feet)

All measurements are approximate. Nevin & Wells Residential have not tested any systems or appliances.



### COUNCIL TAX BAND:

**D** - Runnymede Borough Council

### LEASE:

999 years from 2015 (awaiting written confirmation)

### SERVICE CHARGE:

£3500 per annum. (awaiting written confirmation)

### VIEWINGS:

By appointment with the clients selling agents,  
Nevin & Wells Residential on 01784 437 437 or  
visit [www.nevinandwells.co.uk](http://www.nevinandwells.co.uk)

