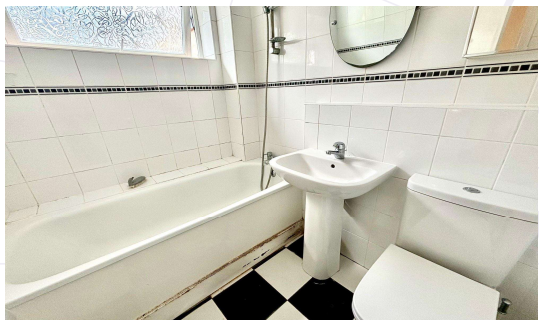
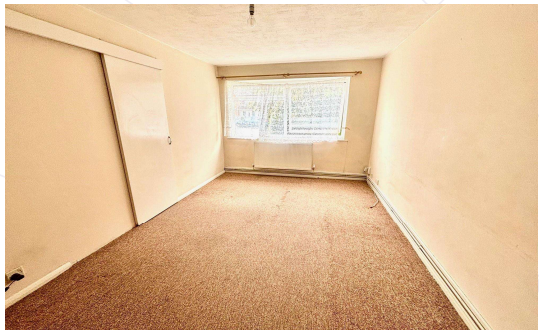




Wendover Court, Staines, TW18 3DP

£258,000 Leasehold



A large two double bedroom ground floor flat, offered for sale with 'NO ONWARD CHAIN'. Benefits include gas central heating, full double glazing, private front door and garage in block. Large communal garden and visitors parking. Access to Staines upon Thames High Street/Station are a mile away. Ideal first time buy or investment

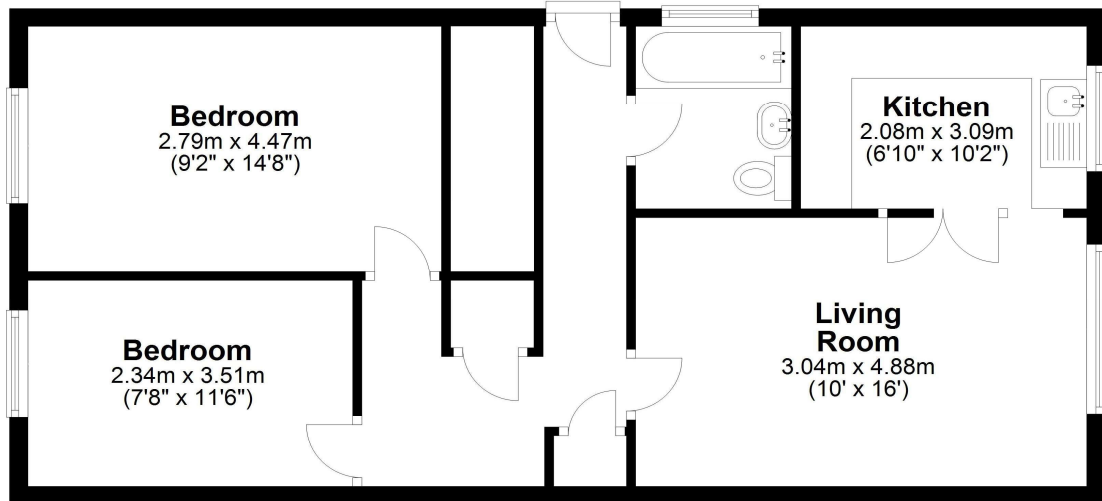
ZERO STAMP DUTY FOR FIRST TIME BUYERS UP TO £425,000

Wendover Court, Staines, TW18 3DP

FLOOR PLAN

Ground Floor

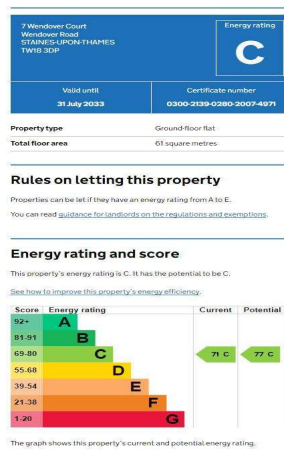
Approx. 59.8 sq. metres (644.1 sq. feet)



Total area: approx. 59.8 sq. metres (644.1 sq. feet)

All measurements are approximate. Nevin & Wells Residential have not tested any systems or appliances.

EPC



COUNCIL TAX BAND: C - Runnymede Borough Council

LEASE: 150 years remaining

CHARGES: Approx. £1500 per annum to include buildings and ground rent

