



**Hammond**  
Property Services

**FOR SALE**

**01949 87 86 85**

[www.hammondpropertyservices.com](http://www.hammondpropertyservices.com)

**WE SELL, WE RENT, WE AUCTION, WE RELOCATE & ...WE QUIZ!**

11 Market Place  
Bingham  
Nottinghamshire  
NG13 8AR

01949 87 86 85

[bingham@hammondpropertyservices.com](mailto:bingham@hammondpropertyservices.com)



**EXTRA COVER 179 ATTENBOROUGH LANE, ATTENBOROUGH, NOTTINGHAM,  
NOTTINGHAMSHIRE NG9 6AB**

**£1,295 PCM**



## EXTRA COVER 179 ATTENBOROUGH LANE, ATTENBOROUGH, NOTTINGHAMSHIRE NG9 6AB

Hammond Property Services are delighted to bring to the market this well presented two bedroom detached bungalow. Which is located in quiet residential area with public transport offering good access to Beeston Town Centre and Nottingham City Centre.

Available immediately this property comprises entrance hall, lounge, dining room, fitted kitchen, two double bedrooms and a bathroom/WC with separate shower cubicle. Gas Central Heating. Double Glazed. Driveway for 2/3 cars. Front & Rear gardens. Council tax band D

The lawns, front and rear, have an open aspect with the neighbouring property and will be maintained by the Landlord. The flower beds and borders will be the responsibility of the tenant.

**DUE TO THE OPEN NATURE OF THE GARDEN THIS PROPERTY CANNOT ACCEPT PETS**

No Smokers,

The fireplaces are ornamental only.

Hammond Property Services would like to make all parties aware that this property is owned by an associate of the company.

**TENANT FEES:** Before the tenancy starts the following are payable: - Holding Deposit: 1 week's rent Deposit: 5 weeks' rent. Initial monthly rent. During the tenancy the tenant is responsible for the rent, utilities, telephone/internet, television licence and Council Tax. Permitted payments include damage outlined in the Tenancy Agreement, reasonable costs incurred due to loss of keys and security devices, breach of tenancy by the tenant, reasonable costs incurred by the landlord due to early termination of the tenancy, any changes to the Tenancy Agreement (£50 VAT inc), interest at 3% for late rent payment determined by the Tenant Fees Act 2019.



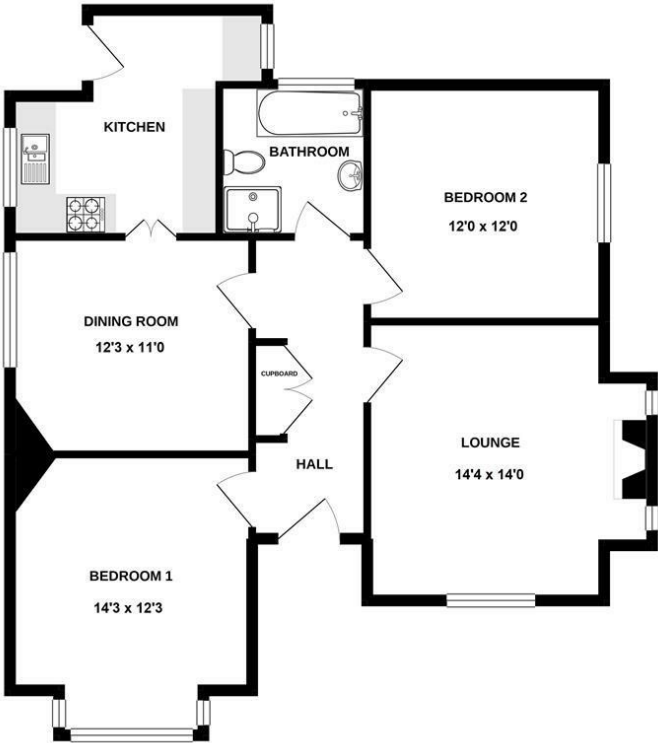
DIRECTIONAL NOTE

For Sat Nav use Post Code: NG9 6AB

Council Tax Band

D

GROUND FLOOR  
874 sq.ft. approx.



179 ATTENBOROUGH LANE, ATTENBOROUGH, NOTTINGHAM NG9 6AB

TOTAL FLOOR AREA: 874 sq ft. approx.

Whilst every attempt has been made to ensure the accuracy of the floorplan contained here, measurements of doors, windows, rooms and any other items are approximate and no responsibility is taken for any error, omission or mis-statement. This plan is for illustrative purposes only and should be used as such for any prospective purchase. The services, systems and appliances shown have not been tested and no guarantee as to their operability or efficiency can be given.  
Made with Metroplan ©2021

Energy Efficiency Rating		
	Current	Potential
Very energy efficient - lower running costs		
(92 plus) A		
(81-91) B		
(69-80) C		80
(55-68) D		
(39-54) E	50	
(21-38) F		
(1-20) G		
Not energy efficient - higher running costs		
England & Wales		EU Directive 2002/91/EC

Environmental Impact (CO <sub>2</sub> ) Rating		
	Current	Potential
Very environmentally friendly - lower CO <sub>2</sub> emissions		
(92 plus) A		
(81-91) B		
(69-80) C		
(55-68) D		
(39-54) E		
(21-38) F		
(1-20) G		
Not environmentally friendly - higher CO <sub>2</sub> emissions		
England & Wales		EU Directive 2002/91/EC



# BINGHAM'S COMMUNITY ESTATE AGENT

We are proud to support all of these Organisations from in and around Bingham which help to make this such a wonderful Town and area to live in.



For more details, email [sponsorship@hammondpropertyservices.com](mailto:sponsorship@hammondpropertyservices.com)



Dame Esther Rantzen with Jonathan Hammond at the launch of our Annual Charity Quiz in aid of ChildLine - raising £5,634 in 2024 for this extremely important Charity.

## ANTI-MONEY LAUNDERING (AML) COMPLIANCE

In accordance with legal requirements, prospective purchasers will be asked to provide identification and verification documents to satisfy Anti-Money Laundering regulations. This process is standard practice for which there is a small fee of £9.50 per applicant and must be completed successfully before any sale can proceed.

## DISCLAIMER ON PROPERTY TESTING

Please note that no appliances, services, nor fittings within the property have been tested by Hammond Property Services. Accordingly, we are unable to offer any warranties or assurances in relation to their condition or functionality. Further queries on these will be answered between the purchasers' and the vendors' conveyancer throughout the purchase process. If you wish for any item to be tested at your own cost, then please contact our office.

## IMPORTANT NOTICE

These sales particulars have been prepared in good faith by Hammond Property Services on the instruction of the vendor. Whilst every care has been taken to ensure accuracy - services, equipment, and fixtures mentioned have not been tested, and prospective purchasers should carry out their own investigations. Measurements and floor plans that have been provided are approximate and for guidance only. These particulars do not form part of any offer or contract.

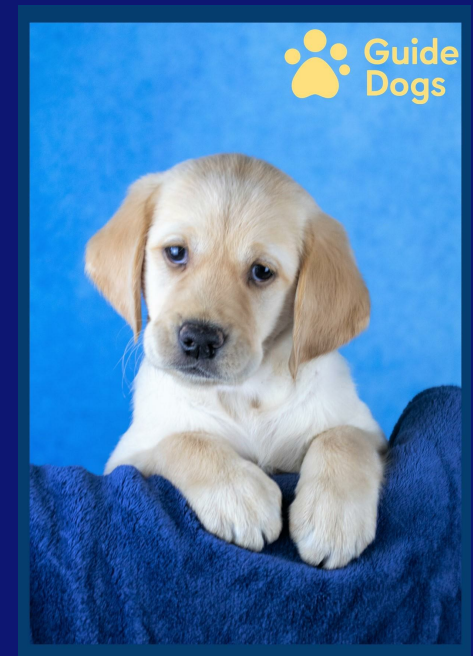
## REFERRAL FEES

Should you choose to use a Solicitor or a Financial Advisor recommended by Hammond Property Services, in the interest of full disclosure, please note that we may receive a referral commission from the legal provider or mortgage broker. 1st October 2025

## Meet 'Pearl'

After months of fundraising, we have now achieved our Target of £5,000 to enable a Guide Dog Puppy to be named and trained on our behalf... and here she is!

Named 'Pearl', to celebrate our 30th Anniversary, we are proud to say that Puppy Pearl is now with her suitably matched recipient and is making a huge difference in the lifestyle to her new beneficiary.

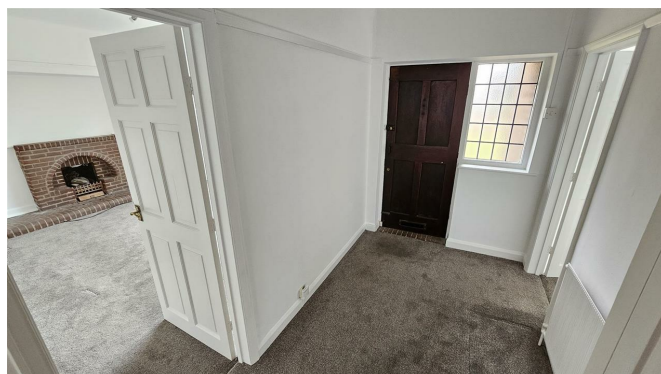






### Property

This well presented two bedroom detached bungalow is located in quiet residential area with public transport offering good access to Beeston Town Centre and Nottingham City Centre. The property comprises entrance hall, lounge, dining room, fitted kitchen, two double bedrooms and a bathroom/wc with separate shower cubicle. Gas Central Heating. Double Glazed. Driveway for 2/3 cars. Front & Rear gardens.





























**Hammond**  
Property Services

---

**FOR SALE**

---

**01949 87 86 85**

[www.hammondpropertyservices.com](http://www.hammondpropertyservices.com)

WE SELL, WE RENT, WE AUCTION, WE RELOCATE & ...WE QUIZ!





To arrange a viewing of this property, please contact our office on  
01949 87 86 85 or email [bingham@hammondpropertyservices.com](mailto:bingham@hammondpropertyservices.com)

If you feel that your property deserves to be marketed and presented like  
this, then please contact our office to arrange a time for  
Jonathan Hammond to call out and to discuss what we do and how we do it!





Steve Pritchett

Please contact us for a FREE discussion on our services

01949 87 86 85

**akerspritchett.com**

MORTGAGE &  
PROTECTION ADVISORS

Mortgages for:  
First Time Buyers  
Home Movers  
Re-mortgages  
Buy to Lets - inc HMOs

Protection for:  
Life  
Critical Illness  
Income Protection

## Did you know that we have a Rental Department?

Are you a landlord?

We have several options, including

**FULLY MANAGED, RENT COLLECTION or LET ONLY**

Your property will be advertised on Rightmove, OnTheMarket.com, hammondpropertyservices.com and will be displayed in our office window.

A comprehensive colour brochure will be available for prospective tenants.

Please call **Denise Campbell** on **01949 87 86 90**





**SOLD**

01949 87 86 85

www.hammondpropertyservices.com

← Want one of these???

**Then get one of these!!!**

→



**FOR SALE**

01949 87 86 85

www.hammondpropertyservices.com

© WE SELL, WE RENT, WE AUCTION, WE RELOCATE & ..... WE QUIZ!!! ©

Impressed by the quality of this brochure?

Does your property deserve to be promoted like this?

Please call this office on **01949 87 86 85** to arrange a suitable time for us to call out and to discuss what we do and how we do it!