

FOR SALE

01949 87 86 85

www.hammondpropertyservices.com

11 Market Place
Bingham
Nottinghamshire
NG13 8AR

01949 87 86 85

bingham@hammondpropertyservices.com



**THE HOUSE IN THE GARDEN, SUTTON LANE,
ELTON ON THE HILL,
NOTTINGHAMSHIRE NG13 9LA**

GUIDE PRICE £895,000

THE HOUSE IN THE GARDEN, SUTTON LANE, ELTON ON THE HILL, NOTTINGHAMSHIRE NG13 9LA

A rare opportunity indeed... a spacious and characterful detached property, created in 1957 but with a clever design that gives a feeling of a much older and very imposing property - hence the high quality materials, the spacious layout with plenty of light behind the design brief, as the property was placed with a southerly facing frontage; allowing the sunshine to stream in through the main windows.

The House in the Garden, as its name suggests, was created within the grounds of the original Elton Manor - hence the many feature boundary brick walls set on a substantial plot, which may be developed even further, subject to necessary planning permissions from the local authority... could the grounds be developed with more properties or simply extending the existing home?

All offers are invited, based on the advertised Guide Price. We will require your timescale, position of funding and also the figure at which you wish to proceed. Please write to Melanie Blockley, Hammond Property Services, 11 Market Place, Bingham, Nottinghamshire NG13 8AR or by email to bingham@hammondpropertyservices.com

This beautiful home is set within the picturesque and historic hamlet village of Elton on the Hill. Rectangular in shape, the total plot of gardens is approximately 0.8 acres, 3,872 sq yds or 3,235 sqm.

As the property is still owned by the original occupier who aided with the design, many of the original features still remain within the property including open fireplaces, functional AGA in the kitchen, spacious and open reception hallway with fireplace, shaped windows, greenhouse and outbuildings and plenty of character at every turn.

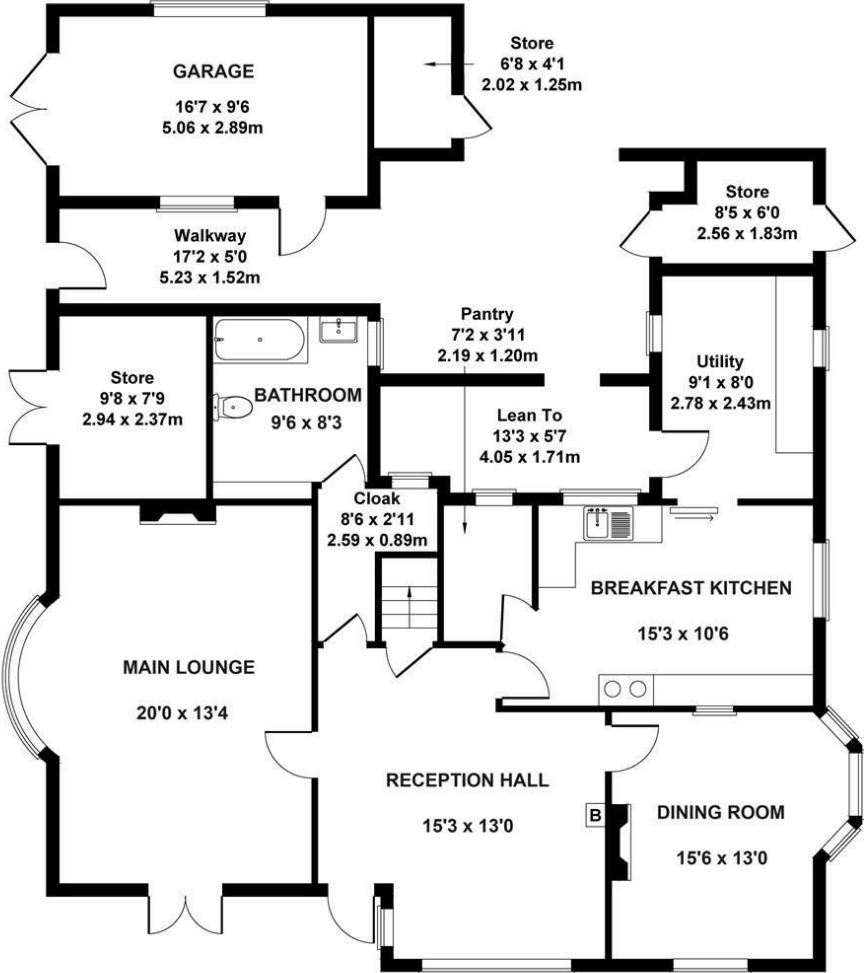
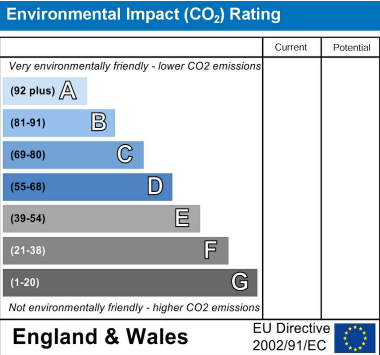
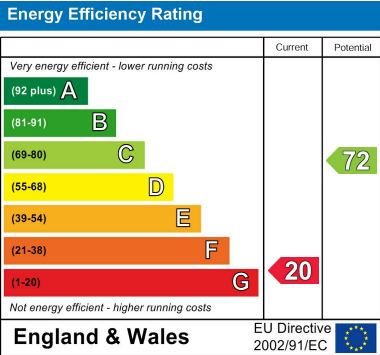
Within the gardens is a wonderful Garden House which, with only a little work and imagination could become the perfect Home Office for all those who have seen a change in working arrangements over the last few years - a peaceful haven.



DIRECTIONAL NOTE From our Bingham Office via the A52, travelling east, towards Grantham. Pass the turnings on the left to Hawksworth and Scarrington and also Aslockton / Whatton in the Vale. Continue for some distance until eventually rising up a hill and then turning right at the crossroads at Elton on the Hill onto Sutton Lane. The road bends to the right and then left, passing St Michael & All Angels Church on your left, this particular property will then be found on the left hand side, some 500 yards past the Church. Please turn and park within the private courtyard for your viewing.

For Sat Nav use Post Code: **NG13 9LA**

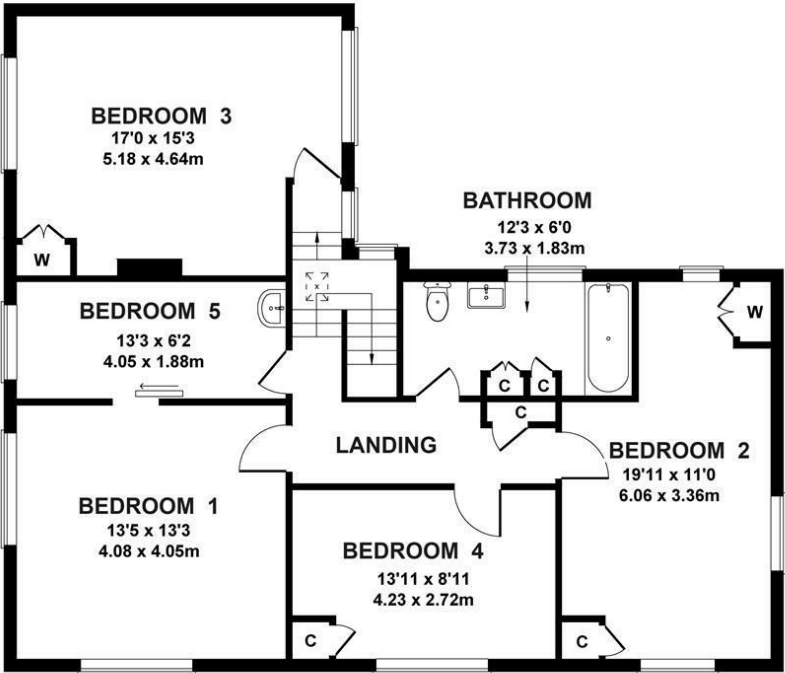
Council Tax Band



THE HOUSE IN THE GARDEN, ELTON

Approximate Gross internal area 2433 sq.ft 226 sq m

NOT TO SCALE - ILLUSTRATIVE PURPOSES ONLY





TO THE FRONT

Set behind a high and gated wall from the original Elton Manor, there are extensive grounds and gardens with a multitude of uses, including a large area for Home Grown vegetables.





TO THE REAR

For the more green fingered amongst us, both a greenhouse and a potting shed are provided, with plenty of raised beds and areas of mature planting, Steps and archways to the rear of the property provide interesting walkways whilst...





TO THE SIDE

The imposing entrance and driveway provides plenty of parking for both Dinner & Garden Parties alike. To the left hand side of the driveway is a further timber Garden House which, with only a little work and imagination could become the perfect Home Office for all those who have seen a change in working arrangements over the last few years - a peaceful little haven.





A covered entrance area leads the hardwood entrance door and into the

HALLWAY

15'0 x 13'0 (4.57m x 3.96m)

a wonderful and cosy room with a feature log burner creating a warm reception on even the coldest of mornings. A window to the front ensures plenty of light and a tiled floor... so sensible for those who enjoy country living.

DINING ROOM

15'6 x 13'0 (4.72m x 3.96m)

with another feature fireplace a double aspect windows ensuring plenty of natural light.





MAIN LOUNGE

20'0 x 13'4 (6.10m x 4.06m)

Back to the hallway, and into the welcoming reception room with period fireplace and parquet flooring. Double aspect windows, again, ensuring a light and airy feel.

BREAKFAST KITCHEN

15'3 x 10'6 (4.65m x 3.20m)

The heart of any home... with a character of an age gone by with handmade kitchen units and a feature AGA.





UTILITY ROOM

9'0 x 8'0 (2.74m x 2.44m)
easy to incorporate with the kitchen to create a large space for those looking for a more open plan living lifestyle.

DOWNSTAIRS BATHROOM / CLOAKROOM

9'6 x 8'2 (2.90m x 2.49m)
with a three piece suite.

GALLERIED LANDING

from the Reception Hallway, an original and turned-spindle staircase leads to the Landing area.



BEDROOM 1

13'6 x 13'3 (4.11m x 4.04m)
a wonderful room with dual aspect windows and an internal door to Bedroom 5





BEDROOM 5 / POTENTIAL EN-SUITE SHOWER ROOM

13'3 x 6'3 (4.04m x 1.91m)

with a door from both the landing and Bedroom 1... the potential for the creation of the en-suite is obvious... OR for use as a Separate Home Office for those who has a change in working patterns over the last few years.

BEDROOM 2

20'0 x 11'0 (6.10m x 3.35m)

a wonderful room with dual aspect windows and built-in storage cupboards.





BATHROOM

12'3 x 6'0 (3.73m x 1.83m)

a three piece suite in pink... with a window to the side elevation.

BEDROOM 3

17'0 x 15'3 (5.18m x 4.65m)

a wonderful room with dual aspect windows and built-in storage cupboards.

BEDROOM 4

14'0 x 9'0 (4.27m x 2.74m)

a further double room with aspect across the front garden area.





OUTSIDE - A FEW MORE PHOTOGRAPHS

plenty of outbuildings and storage sheds... so, when would you like to view?
Please call our office on 01949 87 86 85.





To arrange a viewing of this property, please contact our office on
01949 87 86 85 or email bingham@hammondpropertyservices.com

If you feel that your property deserves to be marketed and presented like
this, then please contact our office to arrange a time for
Jonathan Hammond to call out and to discuss what we do and how we do it!

