

ON HOLD



Milton Street, Derby
Asking Price Of £160,000


MARTIN&CO

Milton Street, Derby

Asking Price Of £160,000

- Recently renovated end of terrace home
- Three bedrooms
- Stunning first floor bathroom
- Sitting room and dining room
- Modern kitchen with integrated appliances

ATTRACTIVELY PRESENTED END OF TERRACE HOME - THREE BEDROOMS - FIRST FLOOR BATHROOM - TWO RECEPTION ROOMS. Offered for sale with no onward chain is this recently

THE PROPERTY Extremely well presented three bedroom end of terrace home that has recently been renovated to a high standard. The property briefly comprises entrance hall, a beautiful sitting room, separate living room and kitchen with integrated appliances. To the first floor three bedrooms and a lovely bathroom. Externally there is an enclosed garden with an area of patio and a shaped lawn.

ENTRANCE HALL With central heating radiator. Providing access to lounge and dining room.

SITTING ROOM 10' 10" x 10' 1" (3.32m x 3.077m) With double glazed window to the front elevation. Central heating radiator.



DINING ROOM 11' 3" x 13' 1" (3.45m x 4.007m) Beautifully presented dining room benefitting from double doors to the rear garden. Access to the cellar. Central heating radiator.

KITCHEN 8' 9" x 6' 8" (2.68m x 2.037m) With units at eye and base level, offering work surface, storage and appliance space. Four ring induction hob with splashback. Electric cooker and grill under. Integrated fridge, freezer and washing machine. Worcester combination central heating boiler.

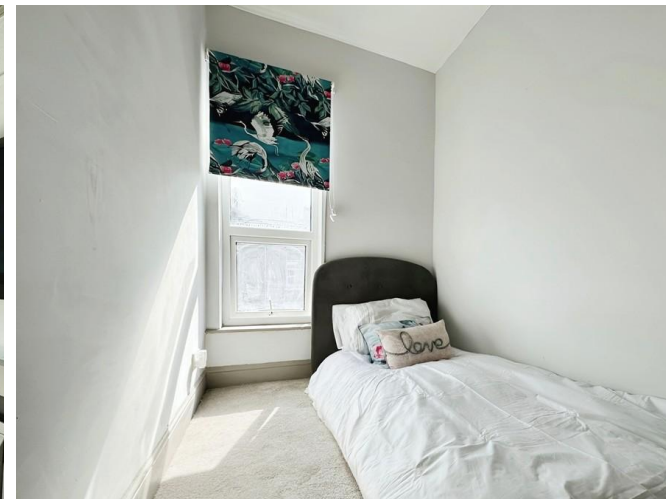
FIRST FLOOR

BEDROOM ONE 10' 10" x 7' 1" (3.31m x 2.18m) With double glazed window to the front elevation. Central heating radiator.

BEDROOM TWO 8' 3" x 9' 10" (2.53m x 3.01m) With double glazed window to the rear elevation. Central heating radiator.

BEDROOM THREE 13' 10" x 5' 8" (4.24m x 1.75m) With double glazed window to the front elevation. Central heating radiator.

BATHROOM Recently refitted bathroom suite in white, of panelled bath with shower over, wash hand basin and WC. Double glazed window to the rear elevation.



Martin & Co Derby

15 St James Street • Derby • DE1 1RF
T: 01332 650068 • E: derby@martinco.com

01332 650068

<http://www.martinco.com>



Accuracy: References to the Tenure of a Property are based on information supplied by the Seller. The Agent has not had sight of the title documents. A Buyer is advised to obtain verification from their Solicitor. Items shown in photographs including but not limited to carpets, fixtures and fittings are not included unless specifically mentioned within the sales particulars. They may however be available by separate negotiation. Buyers must check the availability of any property and make an appointment to view before embarking on any journey to see a property. No person in the employment of the agent has any authority to make any representation about the property, and accordingly any information given is entirely without responsibility on the part of the agents, sellers(s) or lessors(s). Any property particulars are not an offer or contract, nor form part of one. **Sonic / Laser Tape:** Measurements taken using a sonic / laser tape measure may be subject to a small margin of error. **All Measurements:** All Measurements are Approximate. **Services Not tested:** The Agent has not tested any apparatus, equipment, fixtures and fittings or services and so cannot verify that they are in working order or fit for the purpose. A Buyer is advised to obtain verification from their Solicitor or Surveyor.