

FOR SALE



Spitfire Road, Castle Donington

4 Bedrooms, 3 Bathroom, Detached House

£460,000



MARTIN&CO



26 Spitfire Road

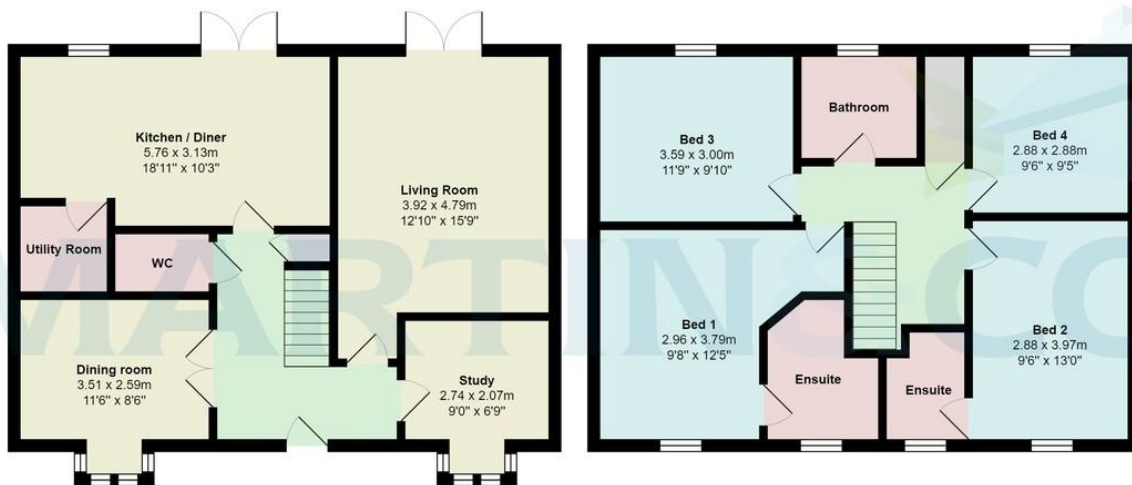
- Offered for sale with no onward chain
- Beautifully presented detached family home
- Overlooking a green area to the front
- Four double bedrooms, two being en-suite
- Stunningly refurbished

Score	Energy rating	Current	Potential
92+	A		92 A
81-91	B		
69-80	C	77 C	
55-68	D		
39-54	E		
21-38	F		
1-20	G		

OFFERED FOR SALE WITH NO ONWARD CHAIN - BEAUTIFULLY PRESENTED DETACHED FAMILY HOME - FOUR DOUBLE BEDROOMS, TWO BEING EN-SUITE - DETACHED DOUBLE GARAGE. Overlooking a green area to the front elevation is this particularly impressive Bloor Homes built detached residence that offers well proportioned accommodation of around 1,500 square feet. Features of the

Offered for sale with no upward chain is this beautifully presented and enhanced detached family property built by Bloor Homes. Situated within the ever popular Spitfire Road development, the property offers well proportioned accommodation including three reception rooms, spacious breakfast kitchen and four double bedrooms, two being en-suite, the shower room to the master having been stunningly refurbished. Externally there are views to a green area at the front elevation, to the rear a detached double garage. This home can only be appreciated by personal inspection, call 01332 650068 to arrange your viewing.

Castle Donington itself is a highly popular town with an excellent standard of amenities including schooling at all levels, easy access to the national motorway network plus Parkway railway station and East Midlands airport



Martin & Co Derby

15 St James Street • Derby • DE1 1RF
T: 01332 650068 • E: derby@martinco.com

01332 650068

<http://www.martinco.com>



Accuracy: References to the Tenure of a Property are based on information supplied by the Seller. The Agent has not had sight of the title documents. A Buyer is advised to obtain verification from their Solicitor. Items shown in photographs including but not limited to carpets, fixtures and fittings are not included unless specifically mentioned within the sales particulars. They may however be available by separate negotiation. Buyers must check the availability of any property and make an appointment to view before embarking on any journey to see a property. No person in the employment of the agent has any authority to make any representation about the property, and accordingly any information given is entirely without responsibility on the part of the agents, sellers(s) or lessors(s). Any property particulars are not an offer or contract, nor for part of one. **Sonic / laser Tape:** Measurements taken using a sonic / laser tape measure may be subject to a small margin of error. **All Measurements:** All Measurements are Approximate. **Services Not tested:** The Agent has not tested any apparatus, equipment, fixtures and fittings or services and so cannot verify that they are in working order or fit for the purpose. A Buyer is advised to obtain verification from their Solicitor or Surveyor.