



Seaview Avenue, West Mersea, Colchester

Affordable luxury on Mersea Island. Perfectly positioned in West Mersea's holiday park, this thoughtfully designed holiday home offers stunning views, spacious interiors, and serene coastal living. Whether seeking tranquility or seaside adventures, this is your chance to own a slice of Mersea Island's allure.

Guide price £65,995

Seaview Avenue

West Mersea, Colchester, CO5



- 2 bedroom holiday home
- contemporary finish
- Mersea Island

Delta Hailsham 2023 Static Caravan

A large open plan living/dining and kitchen area creates the perfect hub for family fun or to entertain friends. With ample natural light from the double doors opening onto the decked area and sea views, it creates the perfect ambience for enjoying the serene seaside tranquility of Mersea Island. Wooden style flooring and neutral decor compliment the thoughtfully designed living space to create a spacious feel. There are two bedrooms in the Hailsham, a principal suite which is a generously sized double bedroom and a twin room perfect for guest accomodation. There is also a bathroom.

The Area

Nestled along the scenic coastline of Essex, Mersea Island stands as a hidden gem just off the shores of Colchester. Boasting a unique blend of natural beauty and rich maritime heritage, this idyllic island offers an unparalleled escape for both locals and visitors alike. Colchester's best-kept secret, Mersea Island, invites you to discover its pristine beaches, charming villages, and delectable seafood cuisine. As a haven for outdoor enthusiasts, the island provides a myriad of recreational activities, from sailing and windsurfing to serene coastal walks. With its quaint shops, artisanal markets, and welcoming community, Mersea Island promises an authentic experience that captures the essence of seaside living. Whether seeking a peaceful retreat or an adventure-filled getaway, Mersea Island invites you to explore its unique charm, where every moment is a tide of tranquility and discovery.

Further Information

Sleeps 6

2 Gas Bottles Included

Double Glazing

Super fast internet package

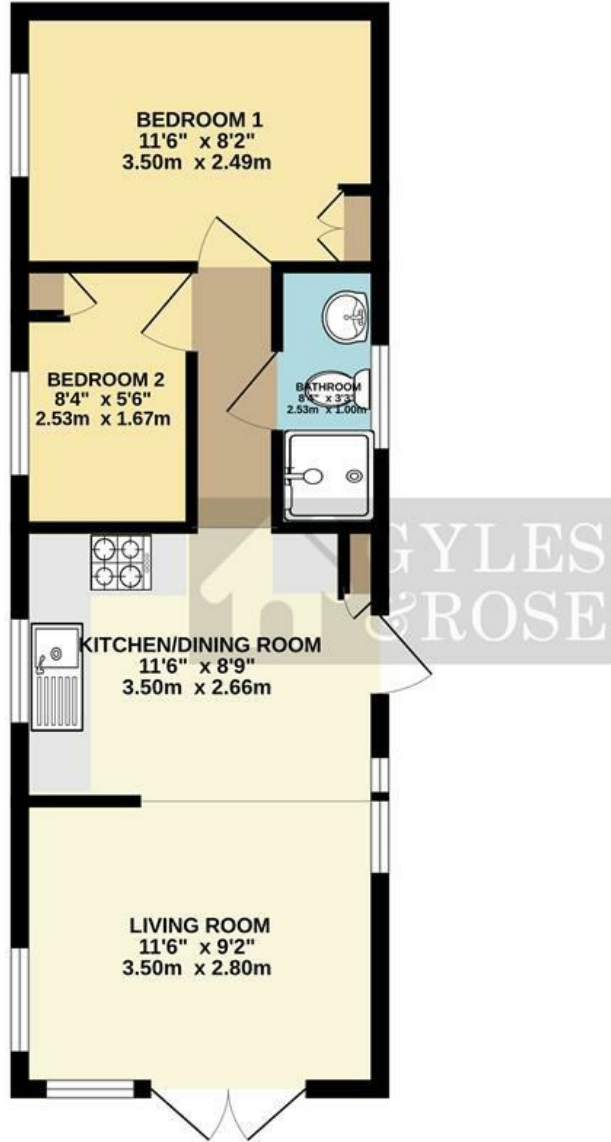
Free 2024/2025 site fees

No solicitor fees



Floor Plan

CARAVAN 2
395 sq.ft. (36.7 sq.m.) approx.



TOTAL FLOOR AREA : 395 sq.ft. (36.7 sq.m.) approx.

Whilst every attempt has been made to ensure the accuracy of the floorplan contained here, measurements of doors, windows, rooms and any other items are approximate and no responsibility is taken for any error, omission or mis-statement. This plan is for illustrative purposes only and should be used as such by any prospective purchaser. The services, systems and appliances shown have not been tested and no guarantee as to their operability or efficiency can be given.
Made with Metropix ©2024

These particulars, whilst believed to be accurate are set out as a general outline only for guidance and do not constitute any part of an offer or contract. Intending purchasers should not rely on them as statements of representation of fact, but must satisfy themselves by inspection or otherwise as to their accuracy. No person in this firm's employment has the authority to make or give any representation or warranty in respect of the property.

| Energy Efficiency Rating | | Environmental Impact (CO ₂) Rating | | | | | |
|--|---------|--|--|-----------------|-----------|-------------------------|--|
| | Current | Potential | | Current | Potential | | |
| <p>Very energy efficient - lower running costs</p> <p>(82 plus) A</p> <p>(81-81) B</p> <p>(69-80) C</p> <p>(55-68) D</p> <p>(39-54) E</p> <p>(21-38) F</p> <p>(1-20) G</p> <p>Not energy efficient - higher running costs</p> | | | <p>Very environmentally friendly - lower CO₂ emissions</p> <p>(81-91) A</p> <p>(69-80) B</p> <p>(55-68) C</p> <p>(39-54) D</p> <p>(21-38) E</p> <p>(11-20) F</p> <p>(1-10) G</p> <p>Not environmentally friendly - higher CO₂ emissions</p> | | | | |
| England & Wales | | EU Directive 2002/91/EC | | England & Wales | | EU Directive 2002/91/EC | |