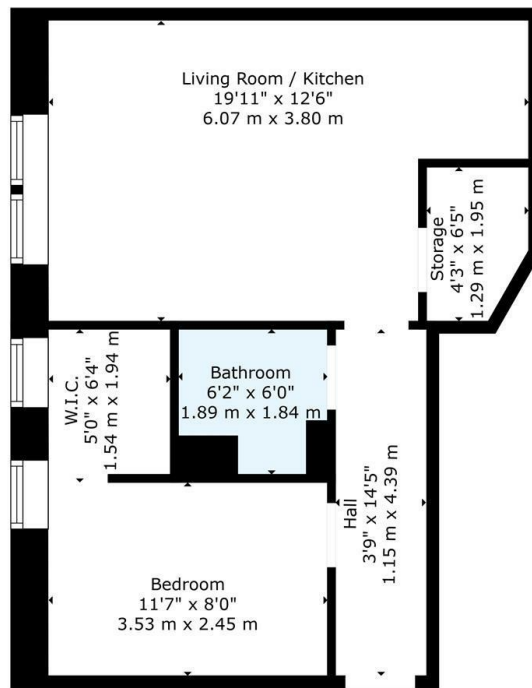




0/1, 4 Sandbank Street, Glasgow, G20 0PJ

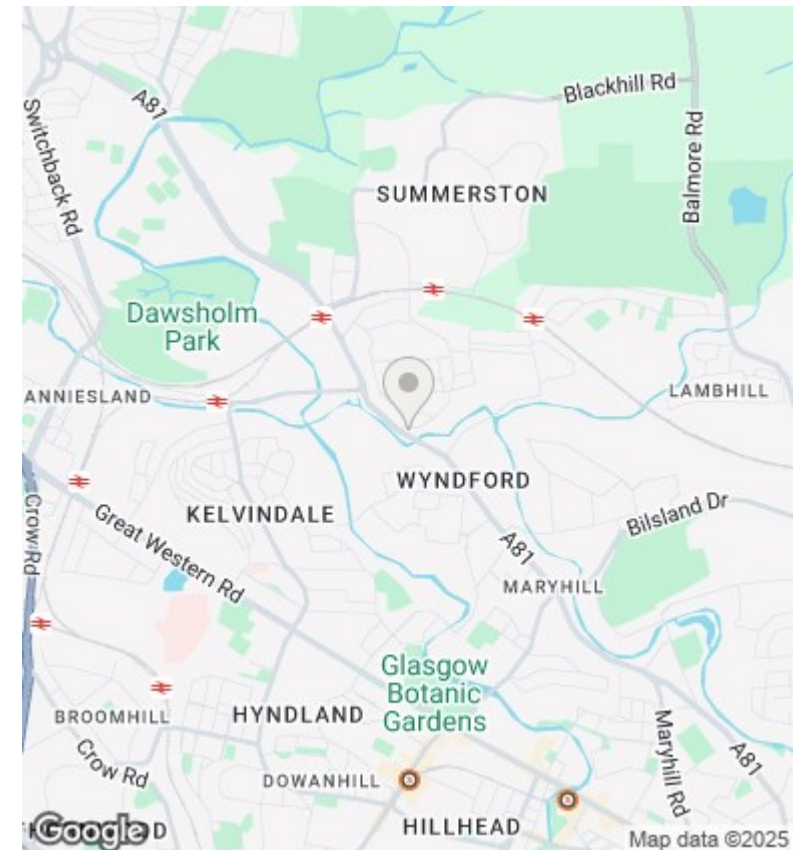
Offers Over £115,000

- Modern Fitted Kitchen
- Stunning Bathroom
- Ground Floor
- Walk In Wardrobe
- Great Location
- EER - D
- Spacious Lounge
- Double Glazing and Gas Central Heating



TOTAL: 482 sq. ft. 45 m²
 FLOOR 1: 482 sq. ft. 45 m²
 EXCLUDED AREAS: STORAGE: 25 sq. ft. 2 m²
 WALLS: 48 sq. ft. 5 m²

Floor Plan Created By Cubicasa App. Measurements Deemed Highly Reliable But Not Guaranteed.



Directions

Viewings

Viewings by arrangement only. Call 01417751050 to make an appointment.

Council Tax Band

D

EPC Rating:

D

Energy Efficiency Rating		
	Current	Potential
Very energy efficient - lower running costs		
(92-plus) A		
(81-91) B		76
(69-80) C		
(55-68) D	60	
(39-54) E		
(21-38) F		
(1-20) G		
Not energy efficient - higher running costs		
Scotland	EU Directive 2002/91/EC	