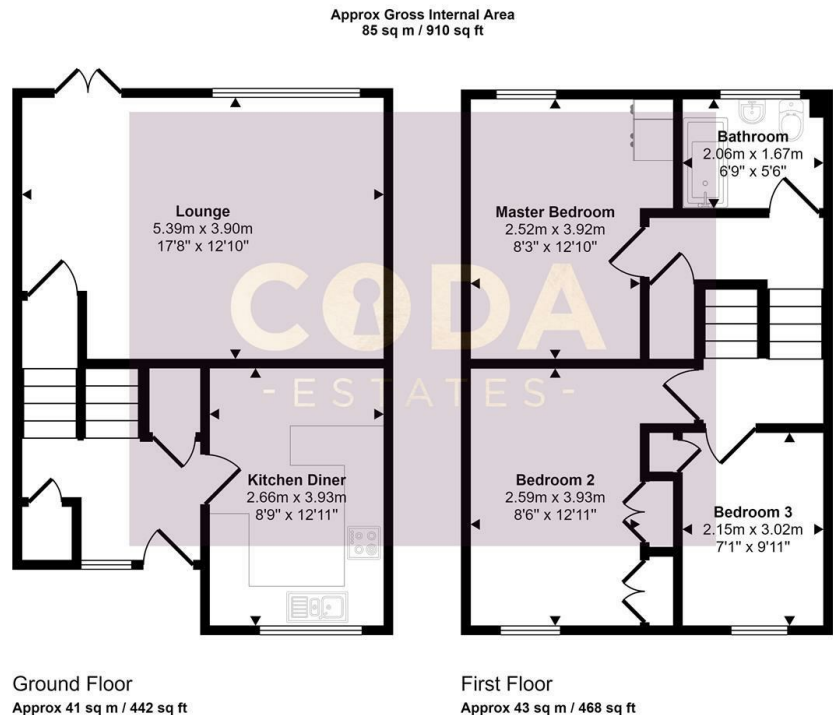




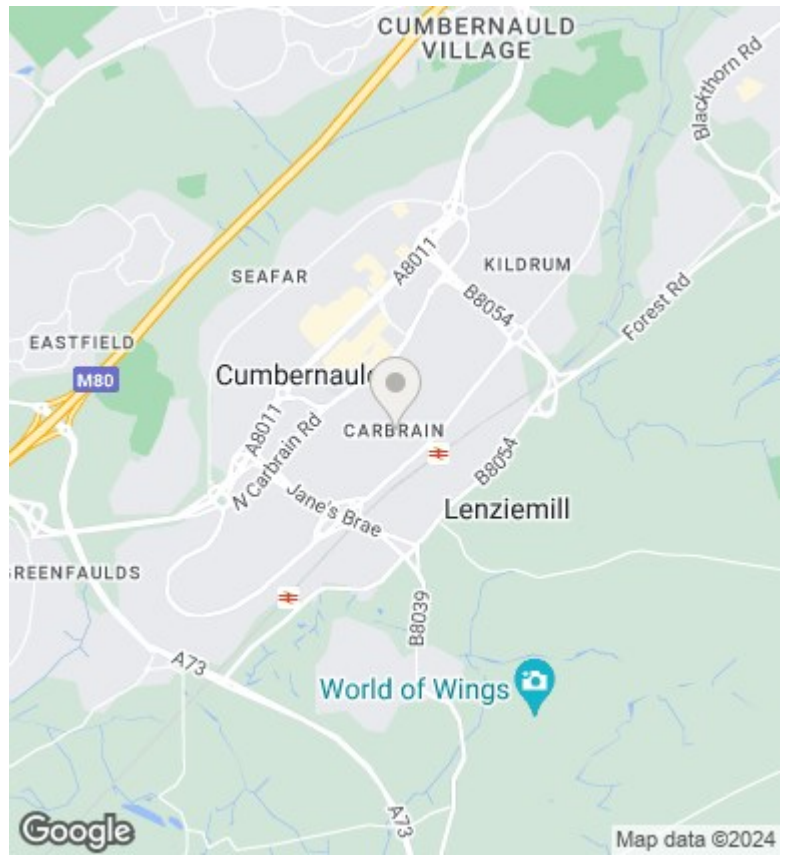
## 27 Broomlands Road, Cumbernauld, Glasgow, G67 2PU

Offers Over £105,000

- Spacious Mid-Terrace Property
- 3 Bedrooms
- Ample Storage Throughout
- EER - C
- Excellent FTB Opportunity
- Fully Fitted Kitchen
- Walking Distance to Station
- Large Bright Lounge
- South Facing Gardens
- Close to all Local Amenities



This floorplan is only for illustrative purposes and is not to scale. Measurements of rooms, doors, windows, and any items are approximate and no responsibility is taken for any error, omission or mis-statement. Icons of items such as bathroom suites are representations only and may not look like the real items. Made with Made Snappy 360.



### Directions

### Viewings

Viewings by arrangement only. Call 01417751050 to make an appointment.

### Council Tax Band

B

### EPC Rating:

C

Energy Efficiency Rating		Current	Potential
<i>Very energy efficient - lower running costs</i>			
(92 plus)	A		87
(81-91)	B	74	
(69-80)	C		
(55-68)	D		
(39-54)	E		
(21-38)	F		
(1-20)	G		
<i>Not energy efficient - higher running costs</i>			
<b>Scotland</b>		EU Directive 2002/91/EC	