

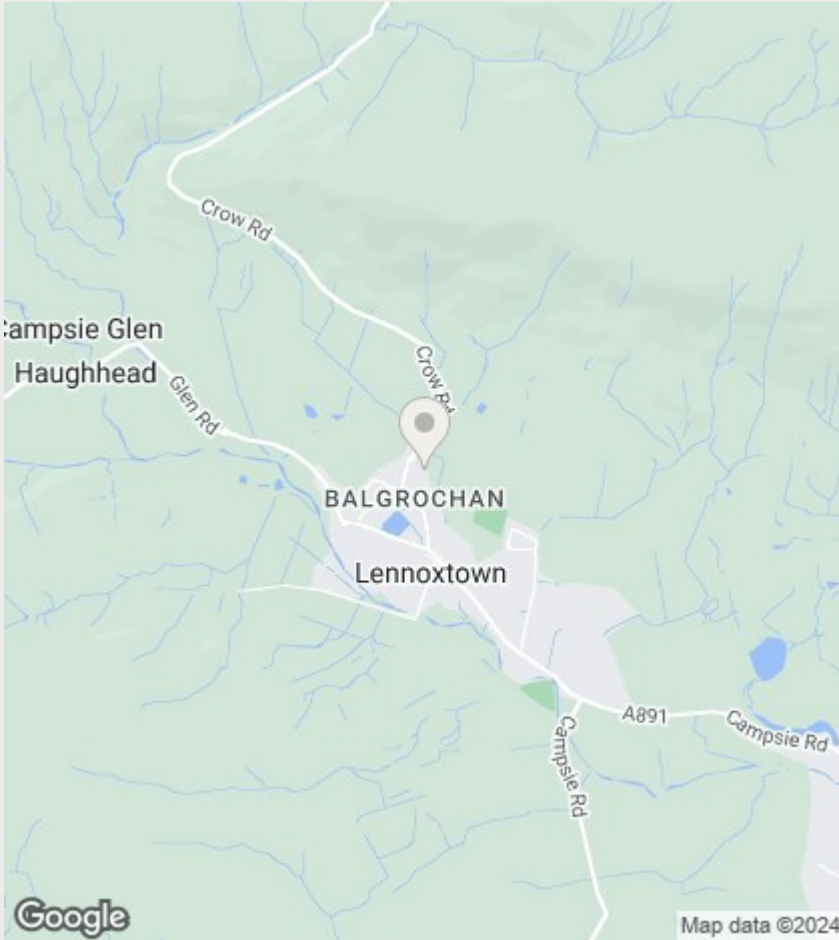


## 27 Geelong Gardens, Lennoxton, Glasgow, G66 7HS

Offers Over £115,000

- Mid-Terrace Home
- Spectacular Views of the Campsies
- 2 Double Bedrooms with Storage
- 4 Piece Family Bathroom Suite
- Close to Local Amenities
- Ideal for First Time Buyers
- Dual Aspect Lounge
- Fully Fitted Kitchen with Appliances
- Private Driveway and Garden
- EER - C





## Directions

## Viewings

Viewings by arrangement only. Call 01417751050 to make an appointment.

## Council Tax Band:

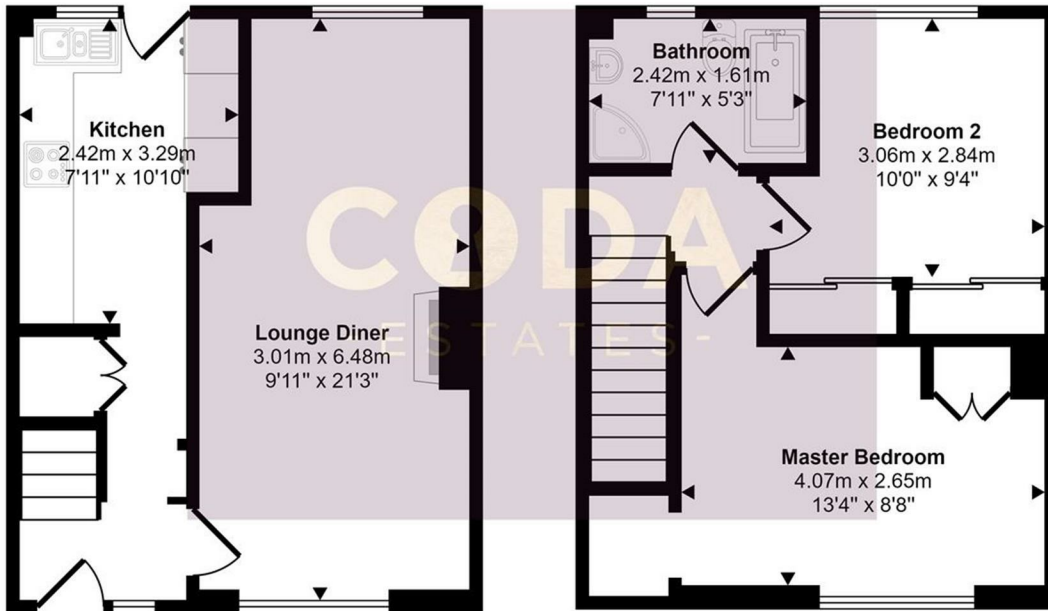
B

## EPC Rating:

C

Energy Efficiency Rating		Current	Potential
Very energy efficient - lower running costs			
(92 plus) A			88
(81-91) B			
(69-80) C		71	
(55-68) D			
(39-54) E			
(21-38) F			
(1-20) G			
Not energy efficient - higher running costs			
Scotland		EU Directive 2002/91/EC	

Approx Gross Internal Area  
64 sq m / 691 sq ft



### Ground Floor

Approx 32 sq m / 346 sq ft

### First Floor

Approx 32 sq m / 345 sq ft

This floorplan is only for illustrative purposes and is not to scale. Measurements of rooms, doors, windows, and any items are approximate and no responsibility is taken for any error, omission or mis-statement. Icons of items such as bathroom suites are representations only and may not look like the real items. Made with Made Snappy 360.