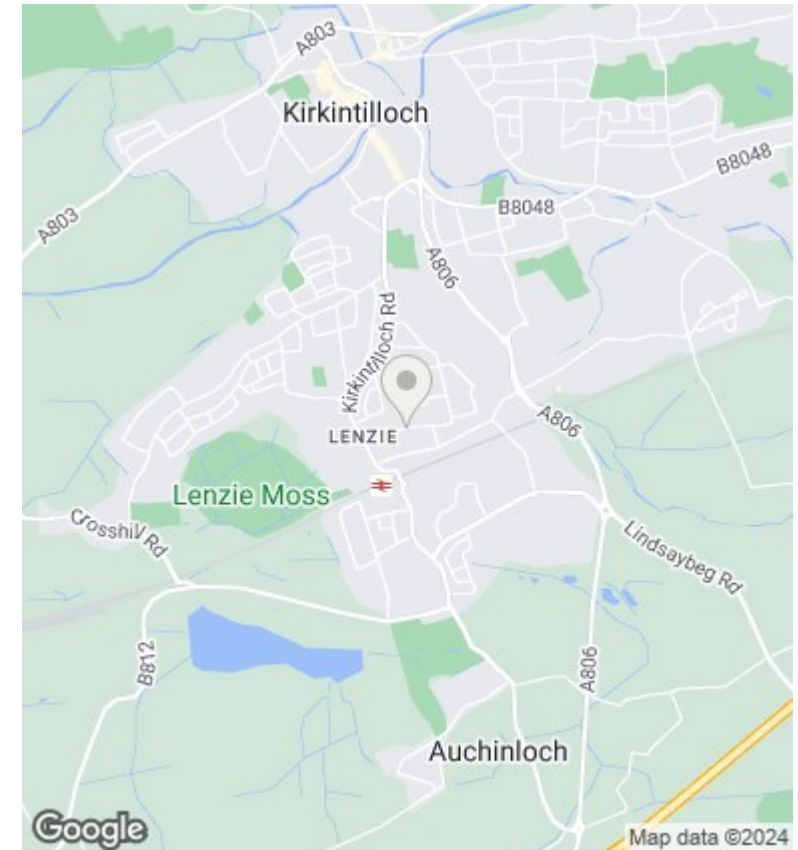
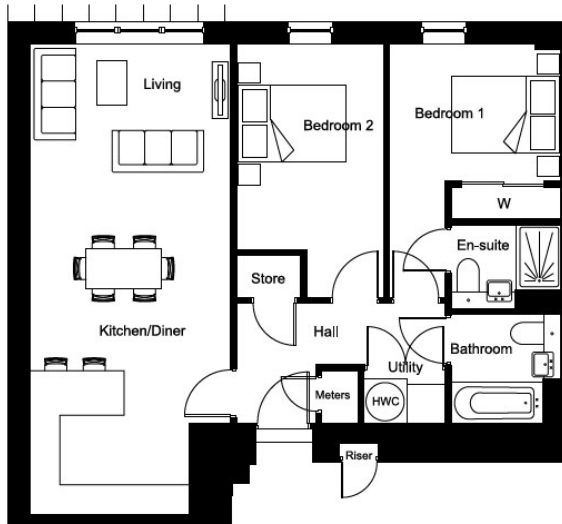




## The Lennox, Plot 11 Moncrieff View, Lenzie, Glasgow, G66 4BG

Fixed Asking Price £210,995

- \*\*\* 75% Shared Equity \*\*\*
- 100% of the Market Growth on the 75% share
- Lift Access
- \*\*\* Further Details Available on Request\*\*\*
- No Additional Rental Fee
- Luxury 2 Bedroom Apartment - Master Ensuite
- Parking
- Available to All Over 50 Year Olds
- Prestigious Lenzie Development in the Heart of the Village
- Last Few Remaining



## Directions

## Viewings

Viewings by arrangement only. Call 01417751050 to make an appointment.

## Council Tax Band

## EPC Rating:

Energy Efficiency Rating		Current	Potential
<i>Very energy efficient - lower running costs</i>			
(92 plus) <b>A</b>			
(81-91) <b>B</b>			
(69-80) <b>C</b>			
(55-68) <b>D</b>			
(39-54) <b>E</b>			
(21-38) <b>F</b>			
(1-20) <b>G</b>			
<i>Not energy efficient - higher running costs</i>			
<b>Scotland</b>	EU Directive 2002/91/EC		