

Lennox Gardens, , London, SW1X 0DH

- Luxury 2 Bedroom 3 Bathroom
- Modern kitchen with integrated appliances
- Excellent amenities
- Close to Harrods
- In Chelsea
- Ground-Floor
- Communal Gardens
- Next to Knightsbridge
- Victorian Style
- Zone 1

Asking Price £3,500,000



Lennox Gardens, , London, SW1X 0DH

DESCRIPTION

Welcome to Lennox Gardens, London - a truly exquisite location for this stunning apartment that boasts 1 reception room, 2 bedrooms, and 3 bathrooms spread across 1,216 sq ft of luxurious living space.

Nestled in the heart of London, this property offers the perfect blend of elegance and comfort. The spacious reception room is ideal for entertaining guests or simply relaxing after a long day. With two well-appointed bedrooms, there is plenty of space for a growing family or visiting guests.

The three bathrooms provide convenience and privacy, ensuring that everyone has their own space to unwind. Whether you're getting ready for a busy day ahead or unwinding in a soothing bath, these bathrooms offer both style and functionality.

This apartment is perfect for those who appreciate the finer things in life. The location alone is a dream for anyone looking to experience the best that London has to offer. From world-class dining and shopping to cultural attractions and green spaces, Lennox Gardens has it all.

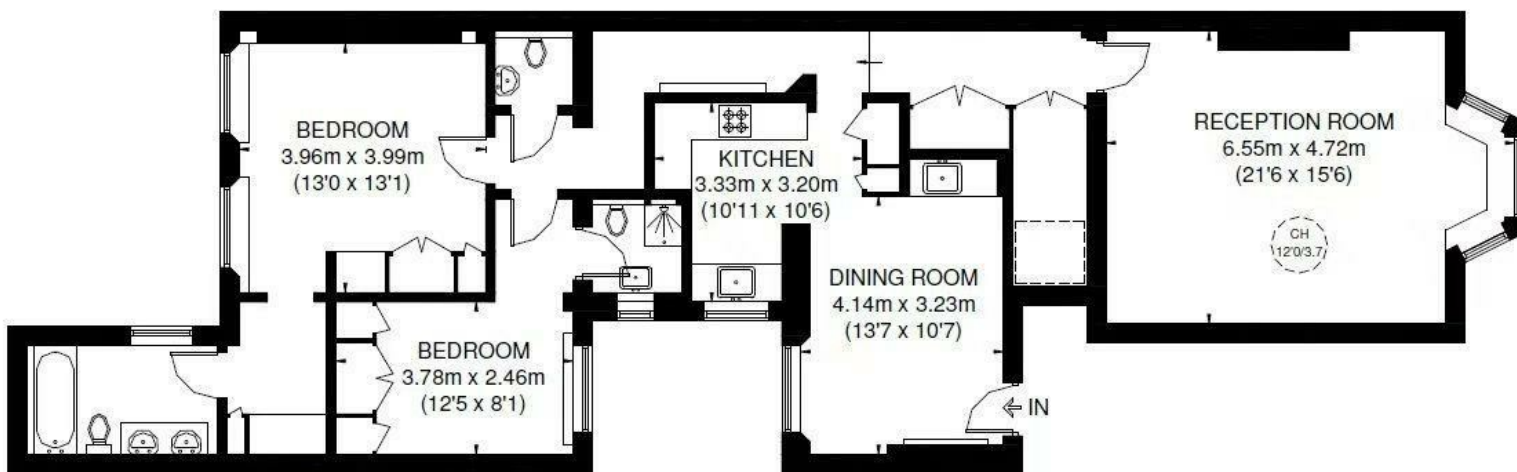
Don't miss out on the opportunity to make this apartment your own. With its prime location, spacious layout, and modern amenities, this property is sure to impress even the most discerning buyer. Book a viewing today and step into the luxurious lifestyle that awaits you at Lennox Gardens.







LENNOX GARDENS



RAISED GROUND FLOOR

APPROXIMATE GROSS INTERNAL AREA
(EXCLUDING REDUCED HEADROOM)

RAISED GROUND FLOOR

1223 SQ. FT. (113.6 SQ. M.)

REDUCED HEADROOM

13 SQ. FT. (1.2 SQ. M.)

TOTAL = 1236 SQ. FT. (114.8 SQ. M.)



This plan is for layout guidance only. Not drawn to scale unless stated. Windows and door openings are approximate. Whilst every care is taken in the preparation of this plan, please check all dimensions, shapes and compass bearings before making any decisions reliant upon them. Please be advised that Hamptons International / our agents have not seen or reviewed any building regulations or planning permission in relation to works carried out to the property (ID252488)

Viewings

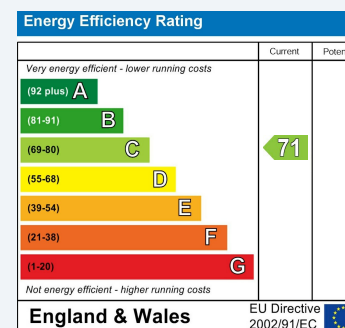
Please contact towerbridge@hunters.com, if you wish to arrange a viewing appointment for this property or require further information.

Valuations

For a valuation of your property, please email the team with your property details, contact information and the times you are available.

ENERGY PERFORMANCE CERTIFICATE

The energy efficiency rating is a measure of the overall efficacy of a home. The higher the rating the more energy efficient the home is and the lower the fuel bills will be.



These particulars are intended to give a fair and reliable description of the property but no responsibility for any inaccuracy or error can be accepted and do not constitute an offer or contract. We have not tested any services or appliances (including central heating if fitted) referred to in these particulars and the purchasers are advised to satisfy themselves as to the working order and condition. If a property is unoccupied at any time there may be reconnection charges for any switched off/disconnected or drained services or appliances - All measurements are approximate.

THINKING OF SELLING? If you are thinking of selling your home or just curious to discover the value of your property, Hunters would be pleased to provide free, no obligation sales and marketing advice. Even if your home is outside the area covered by our local offices we can arrange a Market Appraisal through our national network of Hunters estate agents.