



Marsh Wall, , London, E14 9GS

- *Available now*
- 24 Hours Concierge
- Gym
- sky lounge
- One Bedroom Luxury Apartment
- Swimming Pool
- Games rooms
- 0.6 Miles to South Quay Station

£3,033 Per Month



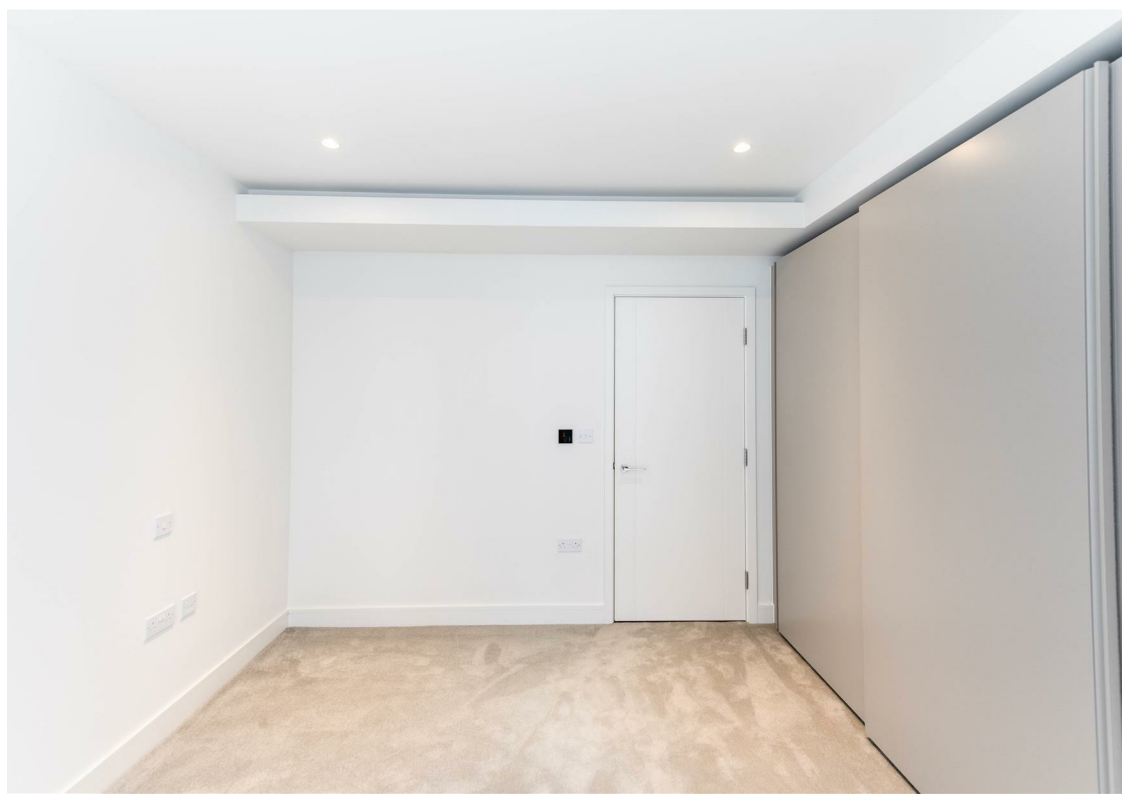
Marsh Wall, , London, E14 9GS

DESCRIPTION

Available Now

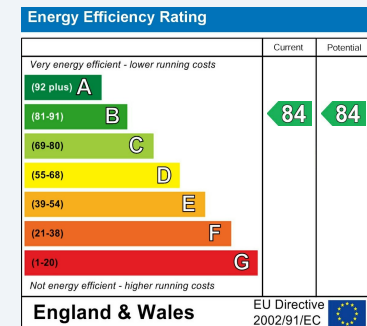
Beautiful one bedroom luxury apartment in Harcourt Tower, E14!





ENERGY PERFORMANCE CERTIFICATE

The energy efficiency rating is a measure of the overall efficacy of a home. The higher the rating the more energy efficient the home is and the lower the fuel bills will be.



These particulars are intended to give a fair and reliable description of the property but no responsibility for any inaccuracy or error can be accepted and do not constitute an offer or contract. We have not tested any services or appliances (including central heating if fitted) referred to in these particulars and the purchasers are advised to satisfy themselves as to the working order and condition. If a property is unoccupied at any time there may be reconnection charges for any switched off/disconnected or drained services or appliances - All measurements are approximate.

THINKING OF SELLING? If you are thinking of selling your home or just curious to discover the value of your property, Hunters would be pleased to provide free, no obligation sales and marketing advice. Even if your home is outside the area covered by our local offices we can arrange a Market Appraisal through our national network of Hunters estate agents.

Viewings

Please contact towerbridge@hunters.com, if you wish to arrange a viewing appointment for this property or require further information.

Valuations

For a valuation of your property, please email the team with your property details, contact information and the times you are available.



55 Royal Mint Street, London, E1 8LG
Tel: 020 8168 5555 Email: towerbridge@hunters.com <https://www.hunters.com>

