



Keats Close, , London, SE1 5TZ

- ****Available 1st September 2024****
- 5 Bedrooms
- Student friendly
- Off Street Parking

- ***Please view 360 Virtual Tour***
- 2 Bathrooms
- Private Garden
- Furnished

£5,200 Per Month



Keats Close, , London, SE1 5TZ

DESCRIPTION

Welcome to Keats Close, London, SE1 - a charming property that boasts 2 reception rooms, 5 bedrooms, and 2 bathrooms. This delightful house is perfect for those seeking a spacious and comfortable living space in the heart of London.

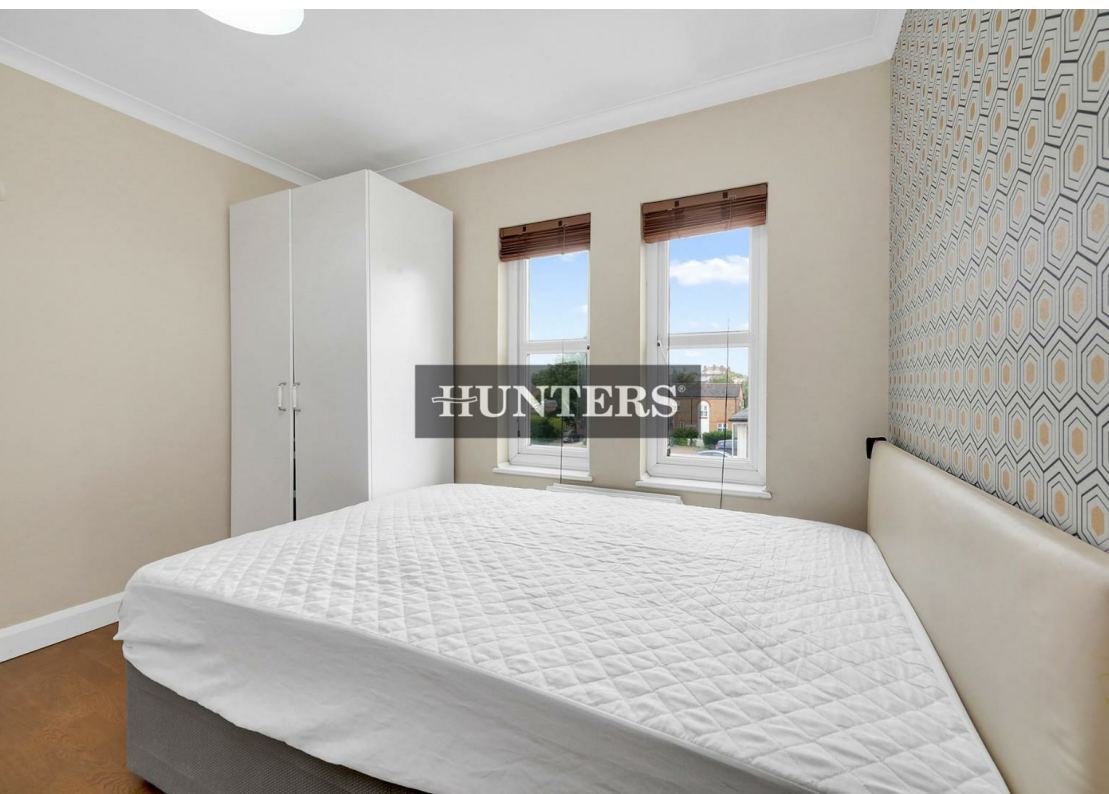
Located in a vibrant area, this property offers the ideal setting for students looking for a convenient and welcoming place to call home. With 5 bedrooms, there is plenty of room for housemates to enjoy their own space while still coming together in the 2 reception rooms for social gatherings and relaxation.

The 2 bathrooms ensure that there is no need to queue in the morning rush, providing added convenience for all residents. Whether you are studying, working, or simply enjoying all that London has to offer, this property offers a fantastic base for your daily activities.

Available from 7th September, this house is ready to become your new home for a 12-month tenancy from September 2024 to July 2025. Don't miss out on this wonderful opportunity to experience student-friendly accommodation in the vibrant SE area of London.

Contact us now to arrange a viewing and secure this fantastic property for yourself. Keats Close awaits to welcome you home!







GROSS INTERNAL AREA (GIA)
The footprint of the property
115.4 sq m / 1242 sq ft
 TOTAL STORAGE SPACE
Storage and wardrobe total area
4.1 sq m / 44 sq ft
 EXTERNAL STRUCTURAL FEATURES
Garden, Balcony, Terrace, Verandah etc.
0.0 sq m / 0.0 sq ft
 RESTRICTED HEAD HEIGHT
Limited use area under 1.5m
0.0sq m / 0.0 sq ft

Disclaimer : Floorplan measurements are approximate and are for illustrative purposes only. While we do not doubt the floorplan accuracy and completeness, you or your advisors should conduct a careful, independent investigation of the property in respect of monetary valuation.

Maison VUE

Viewings

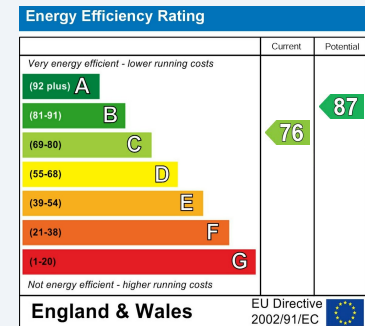
Please contact towerbridge@hunters.com, if you wish to arrange a viewing appointment for this property or require further information.

Valuations

For a valuation of your property, please email the team with your property details, contact information and the times you are available.

ENERGY PERFORMANCE CERTIFICATE

The energy efficiency rating is a measure of the overall efficacy of a home. The higher the rating the more energy efficient the home is and the lower the fuel bills will be.



These particulars are intended to give a fair and reliable description of the property but no responsibility for any inaccuracy or error can be accepted and do not constitute an offer or contract. We have not tested any services or appliances (including central heating if fitted) referred to in these particulars and the purchasers are advised to satisfy themselves as to the working order and condition. If a property is unoccupied at any time there may be reconnection charges for any switched off/disconnected or drained services or appliances - All measurements are approximate.

THINKING OF SELLING? If you are thinking of selling your home or just curious to discover the value of your property, Hunters would be pleased to provide free, no obligation sales and marketing advice. Even if your home is outside the area covered by our local offices we can arrange a Market Appraisal through our national network of Hunters estate agents.