

HUNTERS[®]

HERE TO GET *you* THERE



3 Limeharbour

London, E14 9LU

Offers In The Region Of £675,000



Hunters Tower Bridge are proud to market this two-bedroom apartment in Limeharbour, London, E14 9LU.

This stylish property is located on the twelfth floor.

The property benefits from having floor to ceiling windows providing an abundance of natural light, with the open plan reception room and kitchen. The kitchen has built-in appliances and ample storage.

There are two double bedrooms with the master bedroom offering an en-suite bathroom. The second bedroom offers a balcony. Both bedrooms benefit from having built-in wardrobes and is one of the few flats in the area to have an allocated Parking spot.

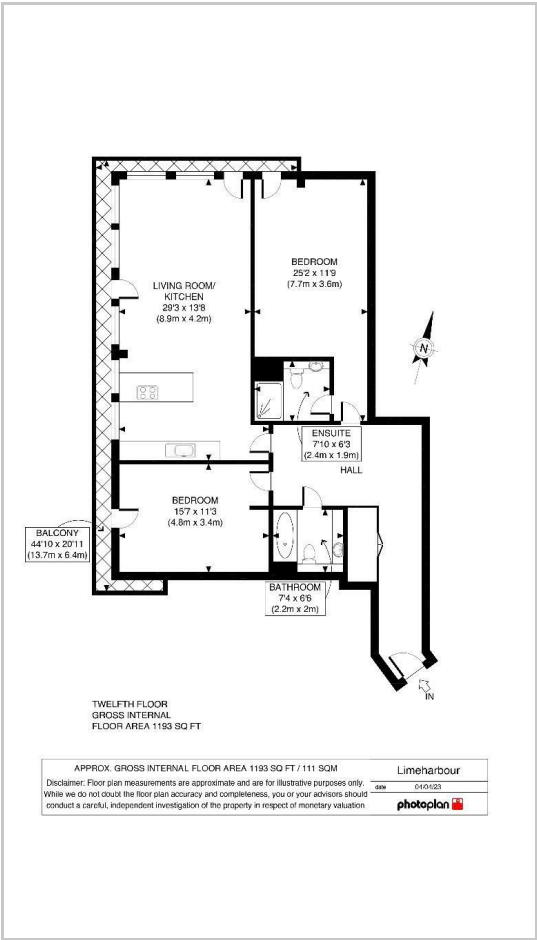
Get in touch with our Hunters team in Tower Bridge for more details.



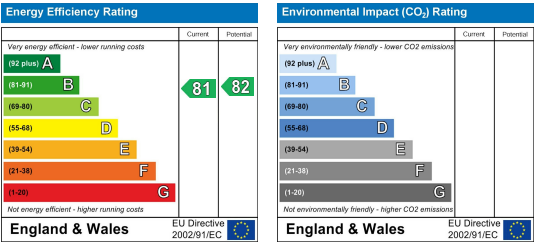
Area Map



Floor Plans



Energy Efficiency Graph



These particulars are intended to give a fair and reliable description of the property but no responsibility for any inaccuracy or error can be accepted and do not constitute an offer or contract. We have not tested any services or appliances (including central heating if fitted) referred to in these particulars and the purchasers are advised to satisfy themselves as to the working order and condition. If a property is unoccupied at any time there may be reconnection charges for any switched off/disconnected or drained services or appliances - All measurements are approximate. **THINKING OF SELLING?** If you are thinking of selling your home or just curious to discover the value of your property, Hunters would be pleased to provide free, no obligation sales and marketing advice. Even if your home is outside the area covered by our local offices we can arrange a Market Appraisal through our national network of Hunters estate agents.