



ESTATE AGENT



Hilldrop Road

Bromley, BR1 4DB

£475,000

Situated on a quiet residential road moments from Sundridge Park Village and Burnt Ash Parade is this tastefully decorated, three-bedroom, end-of-terrace family home.

Entering the property; ground floor accommodation comprises entrance hall, front reception with decorative fireplace, rear dining room, and separate modern kitchen. Accessible from the kitchen is a south-facing garden with side-gate access to the road.

Upstairs consists of two double bedrooms, as well as an additional single-bedroom/office, and a modern three-piece tiled bathroom.

The property is a short walk to local amenities such as Burnt Ash Parade and Sundridge Park Village, offering a selection of independent coffee shops, pubs and restaurants, as well as Sundridge Park Rail Station. Grove Park Station is also within walking distance, serving direct links into London Bridge, London Cannon Street and Charing Cross. Bromley Town Centre is also easily accessible, offering an array of amenities for shopping and dining.

- Three Bedrooms
- Two Reception Rooms
- Seperate Modern Kitchen
- End of Terrace
- South-Facing Garden
- Quiet Residential Road
- Close to Local Amenities
- 0.3 Miles from Sundridge Park Station
- 0.2 Miles From Parish CoE Primary School
- No Onward Chain

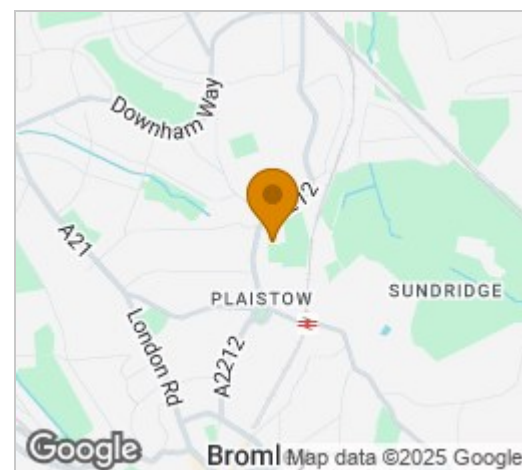
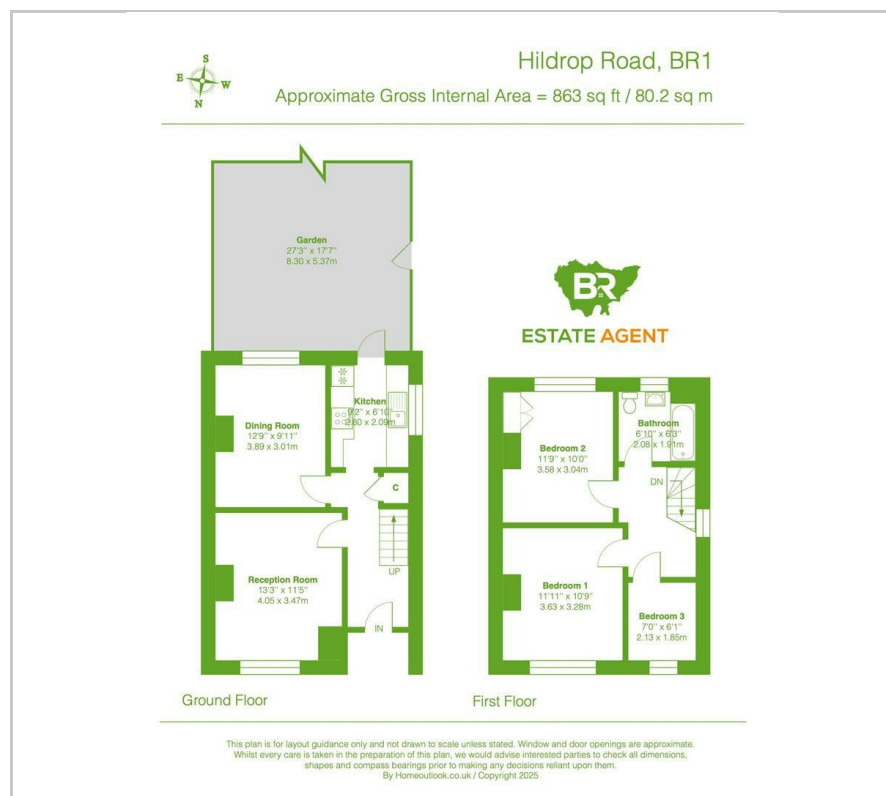
Viewing

Please contact our Bromley Office on 020 3633 8620 if you wish to arrange a viewing appointment for this property or require further information.

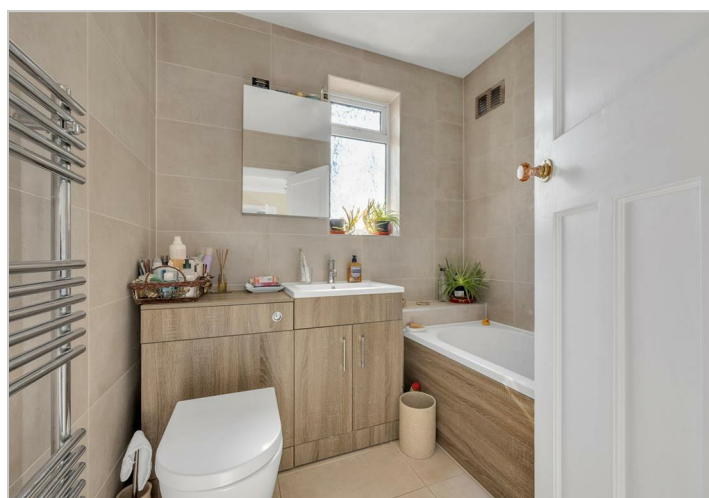
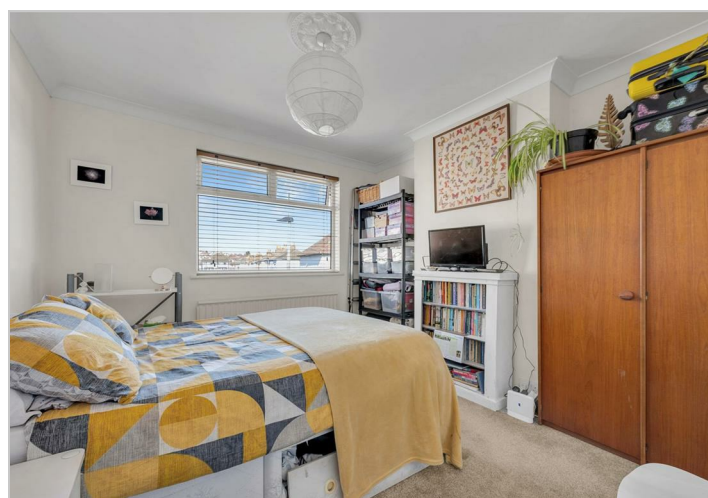
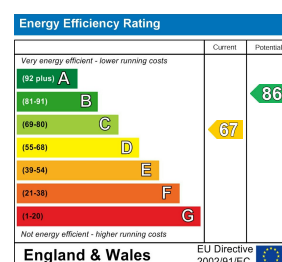


Floor Plan

Area Map



Energy Efficiency Graph



These particulars, whilst believed to be accurate are set out as a general outline only for guidance and do not constitute any part of an offer or contract. Intending purchasers should not rely on them as statements of representation of fact, but must satisfy themselves by inspection or otherwise as to their accuracy. No person in this firm's employment has the authority to make or give any representation or warranty in respect of the property.

107 Burnt Ash Lane, Bromley, BR1 5AB

Tel: 020 3633 8620 Email: info@br-estateagent.co.uk www.br-estateagent.co.uk