



5 Bed  
House - Detached  
located in  
Castleford

Guide Price £375,000



Tulip Close  
Castleford  
WF10 5ZP



From the moment you step inside, you'll notice the generous proportions throughout, with all five bedrooms being doubles. Finished to an immaculate show home standard, the property boasts modern décor, high-quality additional fixtures and fittings, and a beautifully fitted contemporary kitchen that makes this home truly stand out. The top floor is a real highlight, dedicated entirely to the luxurious main bedroom suite. Here you'll find a private dressing area, a walk-through wardrobe, and a stunning EnSuite bathroom with rooftop views — the perfect retreat at the end of the day.

Stunning Five-Bedroom Detached Home — Show Home Standard  
Situating in a sought-after newly built development close to Castleford and Pontefract, this exceptional five-bedroom detached home offers space, style, and quality in abundance.

#### GROUND FLOOR ACCOMMODATION

**Hallway**  
6'11" x 6'9"  
Front composite entrance, a staircase leading into the first floor, central heated radiator. LVT flooring.

**Kitchen**  
12'3" x 28'7"  
With a newly fitted kitchen. Fitted and designed to a high spec with a range of wall and base units incorporating integrated appliances. With a breakfast island to match. The kitchen consists of granite work surfaces under Mount sink and mixer tap Bosch microwave and Bosch oven. Fitted dishwasher wine fridge. Under counter drinks fridge. A 50-50 fridge and freezer. Induction hob with extractor hood over and tinted glass splashback for effect. The flooring is Lvt and opens through to the family area. Gas central heated radiators spotlights to the ceiling. And feature lights which drop over the kitchen island. Access to a storage cupboard. Access to a utility room. Bi-Folding doors open to the landscape garden.

**Laundry Room**  
7'1" x 3'12"  
Plumbing for washing machine and over counter worksurface. UPVC double glazed rear window. Gas central heated radiator. Door to the WC.

**WC**  
5'7" x 3'8"  
Extractor fan to the ceiling, partly tiled walls, a toilet with a low-level flush. Sink with a mixer tap. Gas central heated radiator. UPVC double glazed window to the rear elevation.

**First Floor Landing**  
7'2" x 5'5'3"  
Access to four good size bedrooms and the family bathroom. Gas central heated radiator.

**Bedroom Two**  
9'11" x 14'4"  
UPVC double glazed window to the front elevation. Gas central heated radiator. \* Please note this room is currently being used as a lounge. \*

**Bedroom One**  
8'9" x 12'2"  
UPVC double glazed window to the rear elevation. Gas central heated radiator.

**Bathroom**  
6'11" x 6'  
Toilet with a low-level flush, sink with a mixer tap. Bath with mixer tap and handheld

attachment. Partly tiled walls. Extractor Phantom the ceiling. Gas central heated radiator. UPVC double glazed rear window.

**Bedroom Three**  
10'2" x 9'4"  
UPVC double glazed window to the rear elevation, gas central heated radiator.

**Bedroom Four**  
8'9" x 11'7"  
UPVC double glazed window to the front elevation. Gas central heated radiator.

**Landing area leading to the second floor**  
10'11" x 12'2"  
UPVC double glazed window to the front elevation and a gas central heated radiator.

**Bedroom Five**  
12'5" x 19'11"  
Occupying the top floor of this property is a beautiful bedroom with ensuite and dressing area. With roof windows to the front and rear elevations. The rear elevation opens into a balcony style window. Gas central heated radiator. Storage cupboard. Door to the dressing area.

**Dressing Area**  
Opening into the ensuite bathroom.

**En Suite**  
9'2" x 16'1"  
Toilet with a low-level flush, sink with a mixer tap. Bath with a mixer tap. Double shower cubicle with glass partition shower screen. Gas central heated radiator. extractor fan and loft access.

**Garden**  
To the rear there is a landscape garden with parcel and patio areas step down onto an artificial turf lawn garden. With a side gate access leading to the front. Outdoor sockets and lighting.

**To the front**  
There is a double driveway.

**Garage**  
9'10" x 19'11"  
Up and over Door. Power and light.

Externally, the property benefits from a garage, A double driveway, and a landscaped rear garden, ideal for relaxing or entertaining. Perfectly positioned for modern living, the home is close to motorway networks, train stations, Xscape Yorkshire, and a wealth of local amenities. This is an exceptionally presented property, and internal viewing is essential to truly appreciate the size, quality, and location on offer.





#### GROUND FLOOR ACCOMMODATION

##### Hallway

6'11" x 6'9"

Front composite entrance, a staircase leading into the first floor, central heated radiator. LVT flooring.

##### Kitchen

12'3" x 28'7"

With a newly fitted kitchen. Fitted and designed to a high spec with a range of wall and base units incorporating integrated appliances. With a breakfast island to match. The kitchen consists of granite work surfaces under Mount sink and mixer tap Bosch microwave and Bosch oven. Fitted dishwasher wine fridge. Under counter drinks fridge. A 50-50 fridge and freezer. Induction hob with extractor hood over and tinted glass splashback for effect. The flooring is Lvt and opens through to the family area. Gas central heated radiators spotlights to the ceiling. And feature lights which drop over the kitchen island. Access to a storage cupboard. Access to a utility room. Bi-Folding doors open to the landscape garden.

##### Laundry Room

7'1" x 3'12"

Plumbing for washing machine and over counter worksurface. UPVC double glazed rear window. Gas central heated radiator. Door to the WC.

##### WC

5'7" x 3'8"

Extractor fan to the ceiling, partly tiled walls, a toilet with a low-level flush. Sink with a mixer tap. Gas central heated radiator. UPVC double glazed window to the rear elevation.

##### First Floor Landing

7'2" x 50'5'3"

Access to four good size bedrooms and the family bathroom. Gas central heated radiator.

##### Bedroom Two

9'11" x 14'4"

UPVC double glazed window to the front elevation. Gas central heated radiator. \* Please note this room is currently being used as a lounge. \*

##### Bedroom One

8'9" x 12'2"

UPVC double glazed window to the rear elevation. Gas central heated radiator.

##### Bathroom

6'11" x 6'

Toilet with a low-level flush, sink with a mixer tap. Bath with mixer tap and handheld attachment. Partly tiled walls. Extractor Phantom the ceiling. Gas central heated radiator. UPVC double glazed rear window.

##### Bedroom Three

10'2" x 9'4"

UPVC double glazed window to the rear elevation, gas central heated radiator.

##### Bedroom Four

8'9" x 11'7"

UPVC double glazed window to the front elevation. Gas central heated radiator.

##### Landing area leading to the second floor

10'11" x 12'2"

UPVC double glazed window to the front elevation and a gas central heated radiator.

##### Bedroom Five

12'5" x 19'11"

Occupying the top floor of this property is a beautiful bedroom with ensuite and dressing area. With roof windows to the front and rear elevations. The rear elevation opens into a balcony style window. Gas central heated radiator. Storage cupboard. Door to the dressing area.

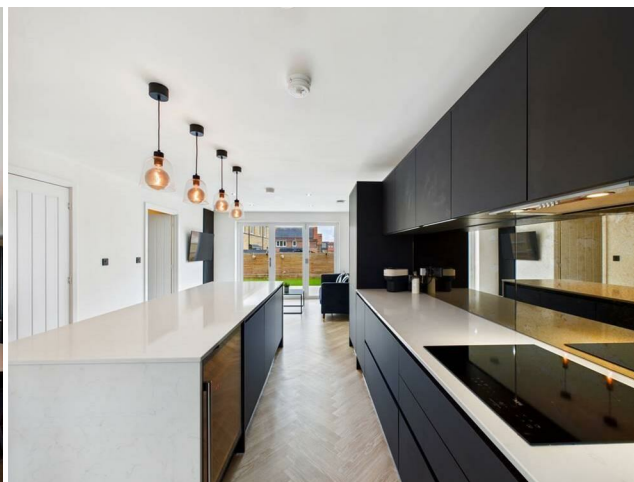
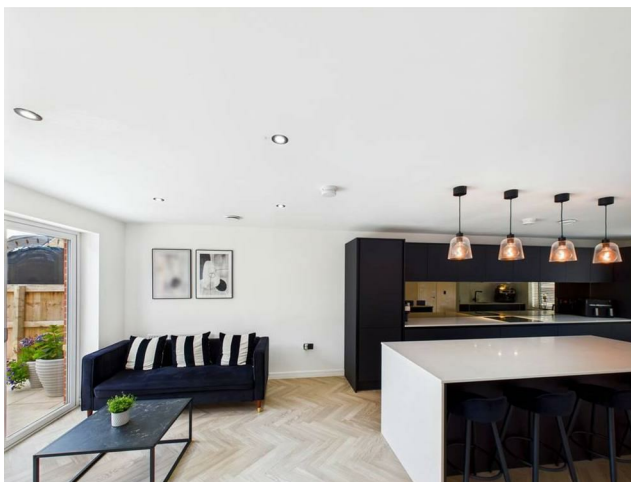
##### Dressing Area

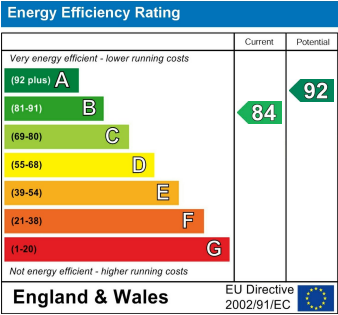
Opening into the ensuite bathroom.

##### En Suite

9'2" x 16'1"

Toilet with a low-level flush, sink with a mixer tap. Bath with a mixer tap. Double shower cubicle with glass partition shower screen. Gas central heated radiator. extractor fan and loft access.





CONTACT

30 Newgate  
Pontefract  
West Yorkshire  
WF8 1DB

E: [info@logicrealestate.co.uk](mailto:info@logicrealestate.co.uk)  
T: 01977 700595

