

The Willows, Olchfa

Sketty, Swansea, SA2 8NP

Nestled in the desirable area of The Willows, Olchfa, Sketty, Swansea, The Caerleon is a remarkable new build detached house that epitomises modern living. Spanning an impressive 1,750 square feet, this exquisite property boasts five generously sized bedrooms, each accompanied by its own en-suite bathroom, ensuring comfort and privacy for all residents. Upon entering, you are greeted by a spacious entrance hall that sets the tone for the rest of the home. The ground floor features a lounge with a charming bay window that invites natural light to fill the space. The heart of the home is undoubtedly the open-plan kitchen, dining, and family area, which seamlessly flows into a delightful sun room, perfect for enjoying sunny afternoons or entertaining guests. The kitchen is designed with modern living in mind, and a convenient utility room provides access to the garage, enhancing functionality.

£635,000

The Willows, Olchfa

Sketty, Swansea, SA2 8NP



- The Caerleon is a stunning new-build detached house epitomizing modern living.
- The ground floor boasts a lounge with a charming bay window, flooding the space with natural light.
- The luxurious master bedroom includes bespoke fully fitted wardrobes, providing ample storage space.
- Spanning 1,750 square feet, it features five generously sized bedrooms, each with its own en-suite bathroom for ultimate comfort and privacy.
- At the heart of the home is an open-plan kitchen, dining, and family area that flows seamlessly into a delightful sunroom.
- Four additional bedrooms, each with their own en-suite, make this home perfect for families or hosting guests.
- A spacious entrance hall greets you, setting a luxurious tone for the rest of the home.
- The modern kitchen is complemented by a utility room with access to the garage, enhancing functionality and convenience.
- The property includes a driveway and garage, combining style with practicality for modern living.

Introduction

Ground Floor

Entrance Hall

WC

Lounge

11'11" x 18'2" (3.64m x 5.56m)

Open Plan Kitchen/Dining Room

Kitchen Area

17'7" x 10'1" (5.37m x 3.09m)

Dining Area

11'10" x 10'1" (3.62m x 3.08m)

Sun Room

Utility Room

7'5" x 10'1" (2.28m x 3.08m)

First Floor

Landing

Master Bedroom

11'11" x 20'9" (3.64m x 6.34m)

En-Suite

8'3" x 5'8" (2.54m x 1.73m)

Bedroom 2

11'11" x 12'4" (3.64m x 3.76m)

En-Suite

9'0" x 6'8" (2.75m x 2.04m)

Bedroom 3

11'8" x 9'6" (3.58m x 2.91m)

En-Suite

5'11" x 5'2" (1.82m x 1.59m)

Bedroom 4

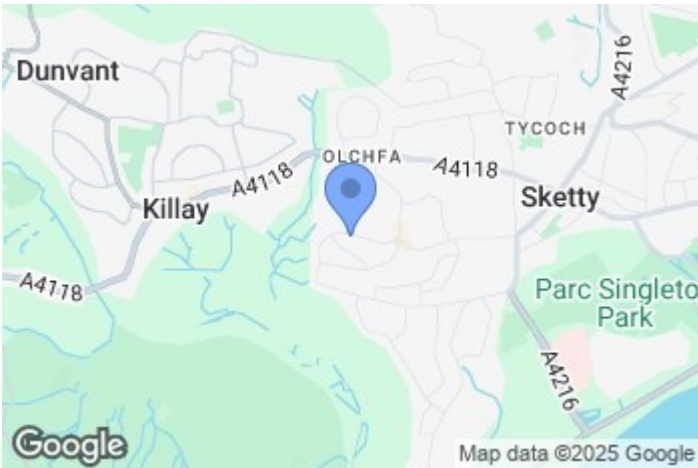
9'6" x 16'10" (2.91m x 5.14m)

En-Suite

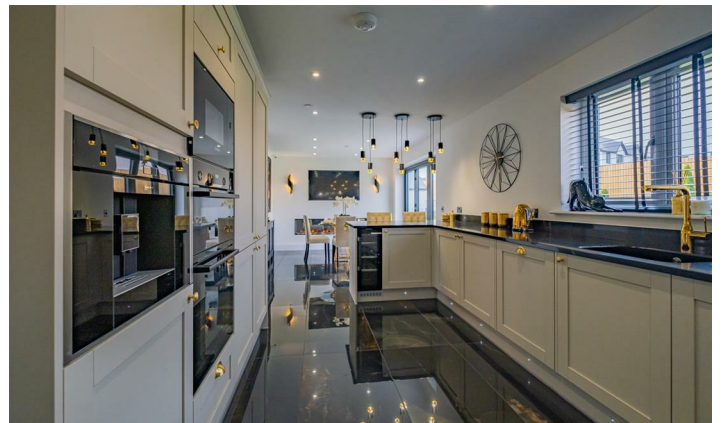
5'1" x 6'0" (1.57m x 1.83m)

Bedroom 5

9'6" x 8'0" (2.91m x 2.44m)



Directions



Floor Plan

These particulars, whilst believed to be accurate are set out as a general outline only for guidance and do not constitute any part of an offer or contract. Intending purchasers should not rely on them as statements of representation of fact, but must satisfy themselves by inspection or otherwise as to their accuracy. No person in this firms employment has the authority to make or give any representation or warranty in respect of the property.

